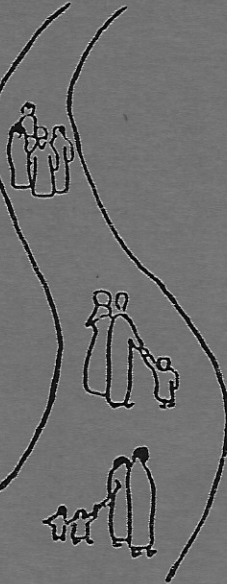


BE ALIVE



INTERNATIONAL LUTHERAN DEAF ASSOCIATION

Tenth Biennial Convention

July 6-9, 1989

Likewise reckon (consider) also
you yourselves to be dead indeed
unto Sin, but alive unto God
through Jesus Christ our Lord

Romans 6:11

KING JAMES VERSION

In Remembrance of their service to the Lord, this program book has been made and represents the 10th Biennial Convention of the I.L.D.A. and is dedicated to the following:



CLEO GUNDERSON

Whom the Lord called to
her eternal rest on
December 7, 1988

Cleo (Vinyard) Gunderson was born August 15, 1901 in Plush, Oregon. She became deaf at the age of two from Scarlet Fever. She attended the Oregon School for the Deaf in 1908 and graduated in 1920. In 1924, she married Henry L. Gunderson. They had two daughters, Lois Fairman and Ellen Hockett. Confirmed in 1927 by the late Rev. Erich Eichmann. In 1971, she was the first person from Oregon to attend the first biennial convention of the International Lutheran Deaf Association. A chartered member of the Salem Lutheran Church for the Deaf. She served as the church's Secretary for many years until her death.



N. FERN RIFE

Whom the Lord called to
her eternal rest on
June 15, 1987

Nellie Fern (Brannon) Rife was born March 14, 1914 in Lemonville, Missouri. She became deaf at the age of eighteen months due to nerve damage from jumping off a bed at about twelve months of age. She graduated from the Missouri School for the Deaf in 1934. Graduated with a Bachelor of Science Degree from Gallaudet College in 1940. Taught at the Arizona School for the Deaf, before moving to the Northwest. July 21, 1944, she married Harold E. Rife, former Northwest Region ILDA President. Three Children: Thomas Rife, Timothy Rife and Viola Christensen. Confirmed in 1951 by Rev. George Ring and a member of Hope Lutheran Church of the Deaf. Taught at the Washington School for the Deaf from 1972 until her retirement in 1982.

NEIL GOLDSCHMIDT
GOVERNOR



OFFICE OF THE GOVERNOR
STATE CAPITOL
SALEM, OREGON 97310-1347

July 6, 1989

Greetings:

As Governor of Oregon, I am pleased to welcome you to Portland for the International Lutheran Deaf Association annual meeting. I hope that your visit here is a pleasant and memorable one.

Your group will find Portland to be a very interesting place to visit. Landmarks in historical preservation, architecture, and a colorful political atmosphere all make Portland an exciting place to visit.

You will similarly appreciate the beautiful landscape of Portland and its environs: the majestic Mt. Hood, the scenic Columbia Gorge, and the Willamette river -- all are equally breathtaking. As Oregon's largest city, Portland has an active cultural life in its downtown offering live theatre, symphony, an extensive inner-city park system, shopping, museums, restaurants and coffee shops. All present an excellent way to spend free time.

My best wishes for a successful convention. I hope you will return to Portland in the future. Good luck!

Sincerely,

Neil Goldschmidt
Governor

NG:ae



CITY OF
PORTLAND, OREGON

OFFICE OF THE MAYOR

Office of
J.E. Bud Clark, Mayor
1220 S.W. 5th
Portland, Oregon 97204
(503) 248-4120

July 6, 1989

TO THE DELEGATES OF THE INTERNATIONAL LUTHERAN DEAF ASSOCIATION:

As Mayor of Portland, Oregon, and on behalf of its citizens, I wish to join with your Oregon members in extending a sincere welcome to our city to the International Lutheran Deaf Association.

Portland is a unique and viable destination for convention and tourism business. Our citizens will welcome your members with their warm, friendly ways. The city itself is a remarkable combination of newer areas and renovated historical areas, providing an atmosphere that is exciting, alive and very "livable." Each hotel, restaurant, attraction, retail outlet, theatre - anything you might wish to see or experience - has its own personality. The "City of Roses" is also known as the "City of Carousels," the "City of Fountains," the "City of Bridges" and the "City Surrounded by Parks" (Portland is the only city in the world to have such a vast parkland system within its boundaries).

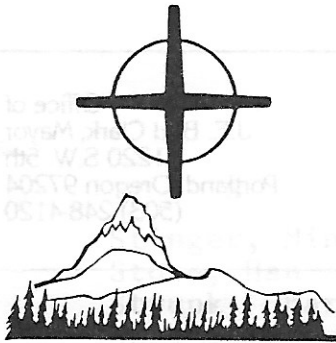
Our city has something to offer for everyone's tastes . . . from birdwatching to boatwatching (being a major port city, ships from all over the world dock at our riverwalls), mimes in the park to major theatrical performances, solitary canoe rides on the Willamette River to mingling with thousands of people who attend Portland's numerous festivals, Little League to sporting events of international acclaim . . . the people in our city truly make the difference. We offer you the challenge to experience our "Sophisticated Wilderness" and guarantee that once you have visited, you'll be back!

We look forward to hosting you in July 1989. If you need any special assistance, please feel free to contact my office.

Sincerely,

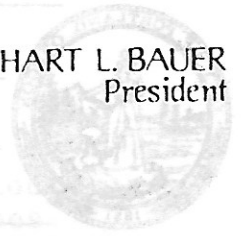
J. E. Bud Clark
Mayor, City of Portland

JEC:ae



THE NORTHWEST DISTRICT OF THE LUTHERAN CHURCH-MISSOURI SYNOD

THE REV. ERHART L. BAUER
President



He has delivered us from the dominion of darkness and transferred us to the kingdom of his beloved Son, in whom we have redemption, the forgiveness of sins...and in him all things hold together.

1700 N.E. KNOTT STREET

PORTLAND, OREGON 97212

503-288-8383

July 6, 1989

Greetings in the name of Jesus, the Savior and Lord of us all!

I am pleased to have the privilege of extending welcome to all the delegates and participants in the National Conference of ILDA in the name of Jesus. Regrettably, I am unable to participate with you in this celebrative convention due to the conflict of dates with the Synodical Convention.

We in the Northwest District are honored that you have chosen Portland for your gathering. The three parishes in the Northwest whose memberships consists primarily of people with deafness are an integral part of our ministry in this region of the country. We delight in the presence of the delegates from other parts of our nation in the Lutheran Church-Canada to give encouragement and support to these ministries as well.

May God's Holy Spirit abundantly nurture the hearts of all of you as you share together and make decisions for ministry among the deaf in the future. May the hospitality of the Northwest District congregations and leaders who are able to participate in this convention serve you well.

Our Lord Jesus bestow His grace richly in your worship and sharing.

Yours Alive in Christ,

Erhart L. Bauer

ELB:pn

Hope Lutheran Church of The Deaf

4936 N.E. Skidmore Street, Portland, Oregon 97218

(503) 284-1014

Jesus is our Lord and God - John 20:28

Dear Friends in Christ,

On behalf of the members of Hope Lutheran Church of the Deaf, and the member churches of the Northwest Region of the ILDA, we welcome you to Portland, and the 10th Convention of the International Lutheran Deaf Association. We pray that your stay in Portland will be enjoyable, and that the Spirit of God may make you "Be Alive" in Jesus Christ.

The work of preparation is finished, now is the time to let the Lord speak, that we may "Be Alive." May the Lord be with you and bless you, now and always. May you go your homeward way safe in His protection, and may you "Be Alive" in Christ where you live, and work, and play.

Blessings,



Rev. David L. Carstens
Pastor



RED LION INN LLOYD CENTER®

1000 N.E. Multnomah, Portland, Oregon 97232 (503) 281-6111

THE RED LION INN, LLOYD CENTER WOULD LIKE TO WELCOME THE ATTENDEES OF THE INTERNATIONAL LUTHERAN DEAF ASSOCIATION CONVENTION.

THE STAFF AND MANAGEMENT ARE HERE TO SERVE YOU DURING YOUR STAY WITH US AND WE ARE ANXIOUS TO WORK TOGETHER WITH YOU TO MAKE YOUR CONVENTION INFORMATIVE AND ENJOYABLE FOR EVERYONE.

AGAIN, WELCOME TO THE RED LION AND WE LOOK FORWARD TO THE OPPORTUNITY OF BEING THE HOST HOTEL FOR FUTURE CONVENTIONS!!

SINCERELY,

RON ANDERSON
GENERAL MANAGER

RA/bn

Jacques, Dorothy
 Jeffries, Solomon
 Jeffries, Susan
 Jitani, Yvonne
 Johnson, Edward
 Johnson, Margaret

Kelly, Wayne
 Kerbel, Evelyn
 Kieffer, Laura
 Kieffer, Louis
 Klein, Marjorie
 Klein, Steven
 Kravitz, Lisa

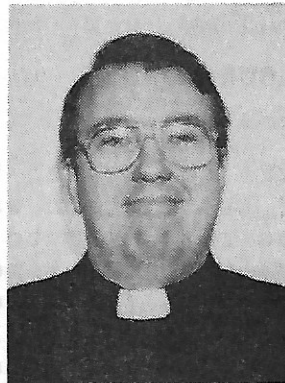
Kudva, Sam
 Kurland, Sonja
 Kuter, Beth
 Kuter, Edward
 Kuter, Susan
 Kuter, Bill
 Kuter, Shirley
 Kuter, Betty
 Kuter, Harvey
 Kuter, John
 Kuter, Susan
 Kuter, William
 Kuter, Sr.
 Kuter, Richard

ILDA EXECUTIVE BOARD

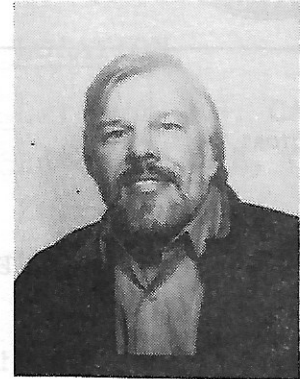
OFFICERS:



Lester Ahls
President



Rev. S. Petzoldt
Pastoral Advisor



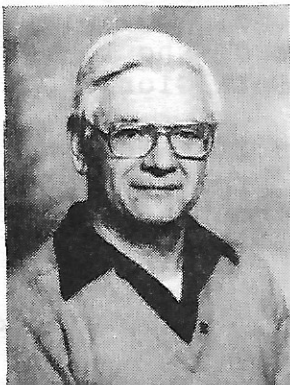
Ronald Byington
President-Elect



Beth Lockard
Secretary



Russel Healey
Treasurer



Elmer Francisco
The Deaf Lutheran
Business Manager



Rev. R. Rynearson
Counselor for Deaf
& Blind Ministry



Donald Mowl
ILDA Historian



INTERNATIONAL LUTHERAN DEAF ASSOCIATION

*"And looking up to heaven. He sighed, and saith unto him, Eph-phra-tha,
that is, be opened." - St. Mark 7:34*

July, 1989

BOARD OF DIRECTORS

OFFICERS:

President

Lester Ahls
1004 Cherrywood Drive
Cedar Falls, Iowa 50613
TTY (319) 268-1313

President-elect

Ronald Byington
5931 W. Coldspring Rd. No. 15
Greenfield, Wisconsin 53220
TTY (414) 327-4686

Secretary

Beth D. Firnhaber
412 W. Miner Street
West Chester, Pennsylvania 19382
V/TDD (215) 436-9751

Treasurer

Russel L. Healey
2500 W. Belmont No. 111
Chicago, Illinois 60618
TDD (312) 975-1211

REGIONAL PRESIDENTS:

Eastern

Donald J. Wetzel
50 Liberty Street
Newington, Connecticut 06111
TDD (203) 667-0069

Great Lakes

James Waters
671 So. Goodman Street
Rochester, New York 14620
TDD (716) 442-0669

Midwest

Donald L. Kissell
311 S.W. Bell
Des Moines, Iowa 50315
TTY (515) 244-9974

Northwest

Ronald L. Madding
1940 N.E. 57th Avenue
Portland, Oregon 97213
V/TDD (503) 287-2777

Pacific

Yachtman A. Sue
1835 So. Manchester Street No. 78
Anaheim, California 92802
TDD (714) 750-4523

Central

William Schwarz
1110 Lindsay Lane
Florissant, Missouri 63031
TTY (314) 838-6889

Dixie

Stephen H. Luke
101 W. CenTex Expwy. No. 503
Killeen, Texas 76541
TDD (817) 526-3239

Pastoral Adviser

Rev. Shirrel Petzoldt
5859 Elmer Drive
Toledo, Ohio 43615
TDD (419) 537-7050

Historian

Donald S. Mowl
1684 E. Maiden Street
Washington, Pennsylvania 15301
TDD (412) 225-8867

Board of Missions

Dr. Rodney R. Rynearson
1333 So. Kirkwood Rd.
St. Louis, Missouri 63122
(314) 965-9000 Ext. 313

GREETINGS IN OUR LORD:

This year marks the second time since the International Lutheran Deaf Association was founded in 1971 that we find ourselves returning to the Great Northwest to meet in convention, the last time being in 1977 in Spokane, Washington. On behalf of the Executive Committee, the Board of Directors and the local host committee, I welcome you to Portland, the Rose Capitol of Oregon!

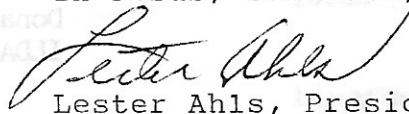
I have noted many times that our conventions seem to be a little bit of heaven here on earth and if heaven is as wonderful as our conventions have always been, then I surely want to go there! Since my first meeting in Spokane, I have found our biennial conventions to be 'a tie that binds our hearts in christian love' and with all the change one sees in the world today, there will never be too much love, which surely must be God's answer to so many of the world's problems.

Chairman Ronald Madding and his committees have spent much time preparing for our four-day stay with important business sessions, banner competition, tours and sight-seeing, a banquet and an election of new officers to lead us into the nineties. As members, your active participation, input and sharing of ideas are solicited as well as voting for leaders who will guide the association wisely in the years to come. And join together in song and praise to our Lord, who to begin with, has made all things possible. Sola Gloria Dei!

Make the most of your visit to the Pacific Northwest and see many of the wonders of God's creation, some of which are unequaled any where on the continent. Our Father put it all here for us to enjoy.

Praise God from Whom all blessings flow.

In Jesus, Our Lord,


Lester Ahls, President

1989 Convention Site: Portland, Oregon

July 6 - 9



1989 ILDA Convention

1940 N. E. 57th Avenue • Portland, Oregon 97213

July 6, 1989

GREETINGS TO ILDA MEMBERS AND FRIENDS IN CHRIST:

It is my pleasure to welcome you to Portland, the "City of Roses," and to OREGON on behalf of the convention host, Hope Lutheran Church of the Deaf and the Northwest Region ILDA to the 10th Biennial Convention of the International Lutheran Deaf Association.

Hope your stay in Portland and at the Red Lion Inn-Lloyd Center will be most enjoyable. The Lloyd Center Mall has begun renovation, since last Spring. During your free time go visit the many shopping stores at the mall, the local restaurants, or take a train ride on the "MAX" to the Portland City Center that boards passengers daily near the hotel.

Our Lord and Savior, Jesus Christ, wants you to "BE ALIVE," our convention theme by telling His children to "BE ALIVE" in His Name forever.

Again, it is my privilege to welcome you to the 1989 ILDA Convention. I wish to express my deep appreciation to all committee members for all the work and their fund raising efforts for making this convention possible.

May our Lord, Jesus Christ, help you Be Alive for Him always.

Yours in His service,
1989 ILDA CONVENTION COMMITTEE

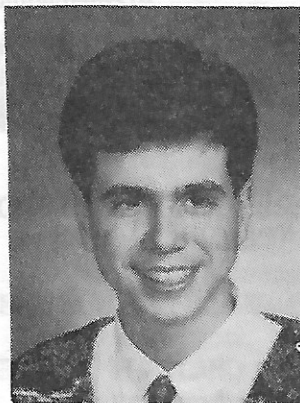
Ronald L. Madding,
Chairman of 1989 ILDA Convention
President of the Northwest Region ILDA

1989 ILDA CONVENTION COMMITTEE



BACK - Fred Drake, Ruth Foss, Jim McKnight, Pastor David Carstens, Richard Zwirnmann, Stanley Miller, Louise Van Roelkl

FRONT - Virginia Lauer, Helen Drake, Mae Madding, Ron Madding-Chairman, Judy Miller



David Miller



Grace Baranski

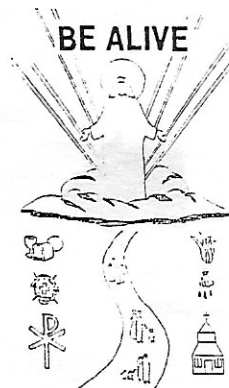
THE BANNER

The convention banner reflects the theme of the 1989 ILDA convention, "BE ALIVE." The theme is both an encouragement and a command. In Romans 6:11, we are told that we are alive in Christ Jesus. To "be alive" means to "become alive." As we are made alive in Christ Jesus, we are growing, moving, living Christians. No longer are we dead in sin, but alive in Christ.

As we look at the banner, our eyes are led to the figure of the risen, victorious Christ Jesus. Through His life, death on the cross, and resurrection, Jesus has defeated the power of sin, death and the Devil over us. The figure of Jesus stands with His arms outstretched, drawing all believers to Himself. Jesus Christ is the one who makes alive.

Our eyes are next drawn to the path, which leads to the risen Lord. On the path are various people walking the walk of new life in Jesus Christ. They are alive in Jesus, alive in their faith, alive in their love, alive in their action.

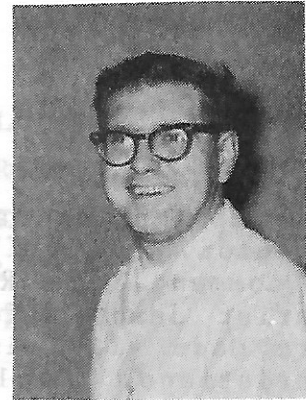
The symbols on either side of the path represent different things that influence the Christians life and make the Christian truly alive. The Chi Rho represents the first letters of the title "Christ" in the Greek language. Jesus, the Christ, is the foundation of our faith. The Crown of Thorns represents the suffering and death of Jesus for us and our sins. The Cup and Bread remind us of Jesus' words when He instituted the Lord's Supper. There, Jesus offers His body and blood for the forgiveness of sins. The Shell and Drops reminds us of our baptism. In our baptism, we have put on Christ. The Flame represents the Holy Spirit, Who gives us power to live the new life in Christ. The Church represents the gathering together of all those who are "Alive." They have become alive through their faith in Christ Jesus. They are continually renewed by God's Word and sacrament. They gather together as an alive community. They are living out the theme, "BE ALIVE."



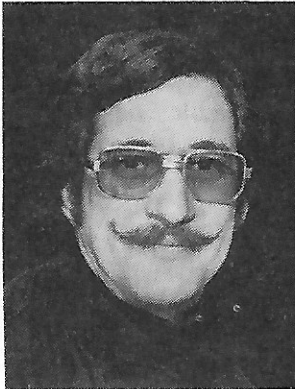
PAST CHURCH WORKERS OF HOPE



Rev. George Ring
1949-1963



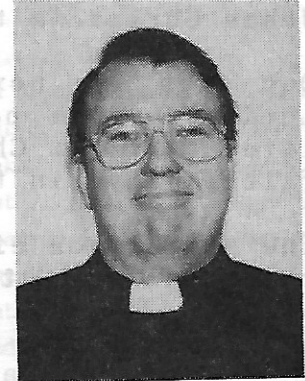
Rev. Larry Harris
1964-1968



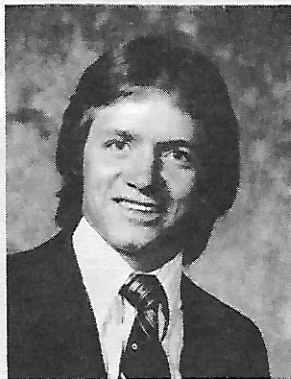
Rev. George Natonick
1968-1974



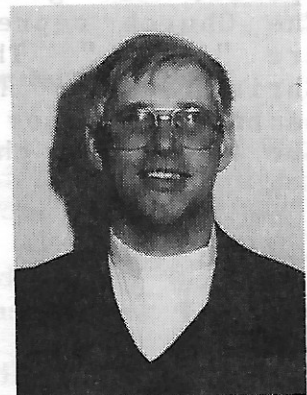
Grace Jewett-Baranski
Deaconess
1973-1974



Rev. Shirrel Petzoldt
1975-1982



Mark Schoepp
DCE
1979-1984



Rev. David Carstens
1984-

**EVENTS IN THE HISTORY
OF
NORTHWEST LUTHERAN MINISTRY
PORTLAND, OREGON**

In 1912, at the request of the Mission Board, Rev. Arthur L. Reinke, pastor of Our Savior Church for the Deaf in Chicago made an exploratory trip to the entire West Coast. He conducted the first Lutheran service for the deaf in Seattle. Later a service was held once in Tacoma, and twice in Portland. He also found a group of deaf in Los Angeles, Oakland, and San Francisco, California. The board did not then send a missionary to remain permanently on the coast. (The Missionary met in the homes of the members. There were 28 deaf at the service held in Portland.)

As a result of Rev. Reinke's visit, the Rev. Oscar Fedder began serving the deaf of the Northwest. He served from 1912 to 1914. Rev. Fedder preached twice a month in Seattle, once a month in Tacoma, and occasionally at Portland. He did this while serving as full-time pastor of Trinity Lutheran Church, a hearing congregation in Seattle. As the work grew, it was found necessary to call a man who could give his entire time to this field.

In 1914, the Synod's Board of Mission sent Rev. Traugott A. Wangerin of Milwaukee to the Pacific Coast to explore the cities and ascertain the number of deaf and opportunities for ministry. As a result of Wangerin's visit the Rev. Nels F. Jensen was called as the first missionary for the coast. At first he lived in Oakland, but later moved to Los Angeles. He had a large field to cover, from Spokane in the eastern part of Washington and Seattle on the coast and south to San Diego. Services were held in the larger cities, and they could not be held as frequently as the deaf may have desired.

For two years Rev. Jensen traveled out of Los Angeles up to the Northwest. He added preaching stations in the following

cities: Salem, Portland, and Vancouver. These were in addition to the stations in San Diego, Seattle, and Spokane. Later a seventh city was added, Yakima, Washington. Rev. Jensen served these seven cities until January 1917. After years of strenuous work, and the monthly trip of 5,000 miles, it became clear that the field was too large to be served by one man. Help was necessary.

In 1916, the Rev. George W. Gaertner was called to serve Washington and Oregon. He had graduated from the Seminary in St. Louis in June of 1916. He was ordained by the President of Synod, Rev. F. Pfothenauer, and received his training in deaf work from missionary in Chicago. In 1917, he was installed in Seattle, and began serving the deaf of Washington and Oregon. For three years he continued to serve the two states.

In 1919, the Rev. John A. Beyer was called to help serve. On October 19, 1919, Rev. Beyer was installed by Rev. Gaertner as the first resident missionary of the deaf in Portland. Rev. Beyer served the deaf in Idaho, Oregon and Vancouver, Washington, until September, 1923, when he was called to serve St. Paul, Minnesota. Rev. George Gaertner then resumed the responsibilities for two more years, serving Vancouver, Portland and Salem until another Pastor could be called.

In 1923, Rev. C. G. Frice was called to serve our mission for the deaf in the Northwest, until Rev. Erich Eichmann was called. Rev. Eichmann began serving December 21, 1924, and remained with Hope until 1942. At that time he was called to serve a hearing congregation. About forty communicant members were under the missionary's instructions by the end of 1925.

In 1926, Hope had their first church. February 21, 1926, the congregation in Portland bought two lots (70 X 100). These were on the corner of Rodney and Wygant Street in north Portland. The purchase was made possible with help from the Mission Board in St. Louis. At this location a neat frame chapel was erected and dedicated to its divine purpose. The chapel had a seating capacity of 125. Pews were made by

members. The altar was made and donated by several members. The Lutheran Ladies Aid Society donated the altar coverings and also a beautiful set of communion ware.

In 1927, during the summer months, an excavation was made under the chapel and a spacious assembly hall was built. The space was much appreciated by the growing congregation.

In 1942, Rev. Eichmann accepted a call to another congregation, and Rev. N. F. Zellmer was called. He accepted and served the Oregon and Washington field once a month until 1947, when he resigned because of ill health.

In 1947 - 1948, Hope was served by a vicar, Mr. E. R. Wutke. He spent the year serving the deaf in the Oregon field.

In 1949, Rev. George Ring came to Portland. He had accepted a call extended to him in 1948, and arrive in Portland on January first. Rev. Ring was installed on January 16, 1949, by Rev. J. L. Salvner, who conducted the service in both signs and speech. Rev. Salvner stayed a few weeks teaching the signs to Rev. Ring. During the first few weeks when the Ring family arrived, they stayed with Mr. and Mrs. Walter Lauer.

In 1949, Hope congregation discussed and wrote a constitution. These discussions took place in the fall, and on December 11, 1949, Hope adopted the constitution.

In 1950, we had our first Northwest Conference of the Deaf at Spokane. Sixty five deaf attended the three day meeting August 11, 12, and 13. They came from Portland, Seattle, Spokane, etc.

In May, 1950, a loan was received from the Missouri Synod for building a parsonage. Ground was turned on May 21, 1950, and construction began on May 24th. The parsonage was adjacent to the church at 75th N.E. Wygant Street. Deaf members of Hope congregation of 68 communicants contributed more than 2300 hours of labor on the project, valued at \$16,000. It was erected under the supervision of Walter Lauer, deaf, who also was chairman of the building committee. He was assisted by Herb Foss and Earl Hughes. The parsonage was occupied October 16,

and dedicated December 1950

In 1951, Mrs. Iris Priem from Trinity Lutheran Church taught Sunday School for the hearing children of deaf parents while the parents attended church service.

In September 1960, Vicar Andrew Harnack arrived. He helped Rev. Ring with the work until he had to leave in June, 1961.

Rev. Ring remained until the summer of 1963, when he accepted a call to serve another deaf parish. Rev. Ring was with Hope for fourteen and half years.

During 1963 and 1964, Rev. Erich Eichmann served as vacancy pastor of Hope until a new pastor could be called.

In 1964, Rev. Larry Harris came to Hope. He had graduated from St. Louis in the spring, and was installed on July 12, 1964. Rev. Harris continued to serve Hope and the deaf field until January, 1968, when he accepted a call to serve the deaf at Toledo, Ohio.

In 1967, Hope Lutheran Church for the Deaf moved from their old home on the corner of Rodney and Wygant. The deaf began sharing facilities with Resurrection Lutheran Church, using a smaller chapel located at 1700 N.E. 132nd.

In 1968, Rev. Eichmann was again asked to serve Hope as their vacancy pastor. He served from January to July, when a new pastor was assigned.

In 1968, Rev. George Natonick arrived to served Hope. He had graduated from the Seminary in St. Louis, and was installed as pastor of Hope on July 21, 1968. The installation to place in the small chapel were Hope worshipped at Resurrection Lutheran Church.

In 1973, two important events happened at Hope. The first was a name change. On September 7, the name of Hope Lutheran Church for the Deaf was changed to Hope Lutheran Church of the Deaf. Second, the old church building at Rodney and Wygant was sold for \$7,647.83. The money from this sale was later used to buy the church on Skidmore.

On September, 1973, Grace Jewett was installed as Hope's

first Deaconess. Her help was much appreciated by the members of the congregation.

In 1974, Deaconess Grace Jewett-Baranski received a call to serve the deaf at Ephphatha Lutheran Church of the Deaf in Chicago. On December 31, she was given a peaceful dismissal from Hope to serve at Ephphatha.

In January, 1975, Hope Lutheran Church of the Deaf made another move, this time into shared facilities with Holy Sacraments Lutheran Church, located at S.E. Oak and 47th. The move was made on January 20th. Resurrection had decided to expand and needed the space used by Hope.

In 1975, Hope was again without a pastor. From January until August of that year, Rev. William Ludwig, pastor of Western Washington Lutheran Church of the Deaf, served as vacancy pastor.

In August, 1975, Rev. and Mrs. Shirrel Petzoldt arrived in Portland. They arrived on August 23, and on August 24, they were welcomed to Portland and Hope at Hope's annual picnic held at Laurelhurst Park.

In March, 1976, Rev. Shirrel Petzoldt went before the Colloquy Board of the Missouri Synod, and on March 21, 1976, was certified as a minister in the LCMS. On October 10, 1976, Rev. Petzoldt was then installed at the chapel of Hope Lutheran Church, located in Holy Sacraments Lutheran Church. Ninety five people were in attendance.

In November, 1977, Hope Lutheran Church of the Deaf made their final move. A church located at 4936 N.E. Skidmore was found for sale, and after looking at it, the decision was made to buy it. On the 21st of November, Hope moved in. Hope again had their own home. On February 5, 1978, Hope Lutheran Church of the Deaf was dedicated to the Glory of God.

In 1978, there was one other change made. The constitution and By-Laws were changed and accepted allowing women to become voters.

In 1979, another staff member was added to Hope Lutheran

Church, Mark Schoepf arrived in Portland as Hope's First Director of Christian Education.

In 1981, there was a lot of activity happening around the church on N.E. Skidmore. Hope was remodeling their church upstairs and down. Then, on November 29, 1981, Hope Lutheran Church of the Deaf was re-dedicated.

In 1982, Pastor Petzoldt received a call to serve the deaf in Toledo, Ohio. On December 3rd, Rev. and Mrs. Petzoldt left Portland to take up their new call. Mark Schoepf continued to serve at Hope while a new paastor was being called.

In 1983, Mark Shoepf resigned from his position as Director of Christian Education to accept a call to Tekoa Landing in Washington. He stayed on at Hope until the end of the year.

In January, 1984, Rev. and Mrs. David Carstens accepted Hope's invitation to fly to Portland to look and see before accepting our call to become our new pastor. On February 1st, Rev. Carstens accepted the call to serve Hope Lutheran Church of the Deaf in Portland and the Oregon field and the Southwestern part of Washington. On April 15th, 1984, Rev. Carstens was installed as pastor of Hope. Rev. E. Bauer, President of the Northwest District was the guest speaker.

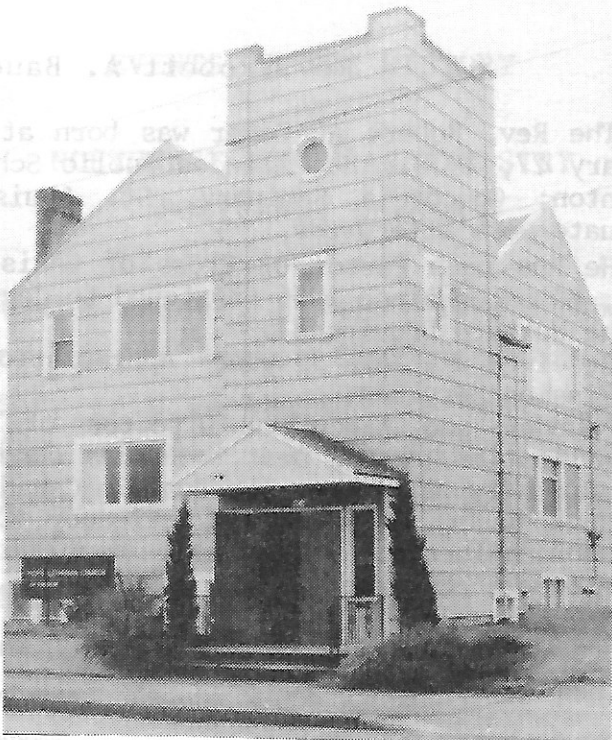
In 1986, Brad Roberts became the first "son" of Hope to complete his training for the Ministry, when he graduated from St. Louis Seminary. He is serving as pastor of a hearing church in Selma, California.

In May, 1986, on May 16, 17, and 18th, Hope Lutheran Church of the Deaf joined in celebrating their 60th anniversary as a congregation with their own building. Rev. and Mrs. G. Ring were invited by Hope congregation to be their guests.

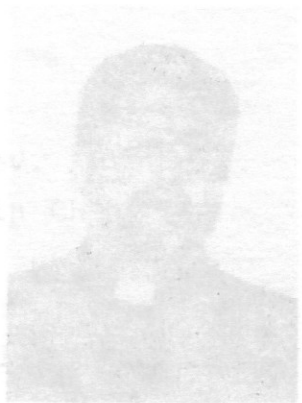


Present Pastor and family

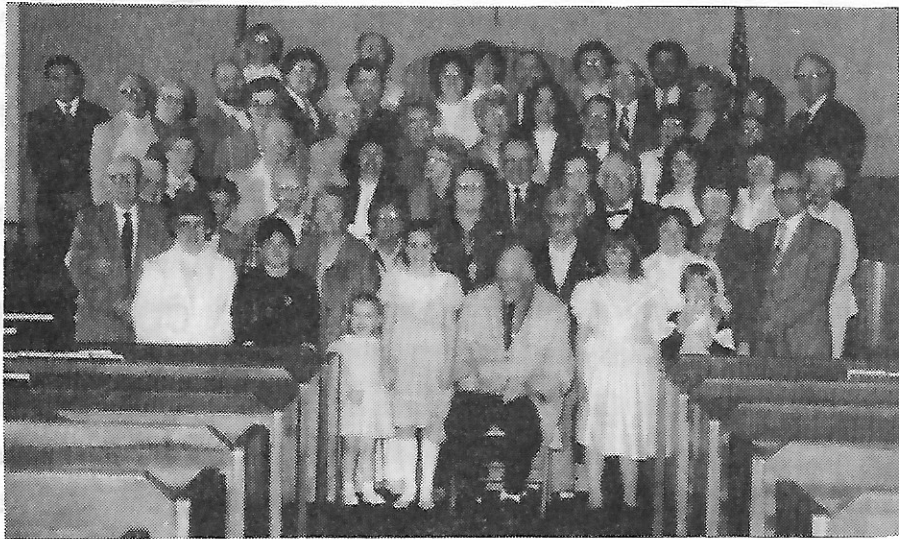
Thursday Event



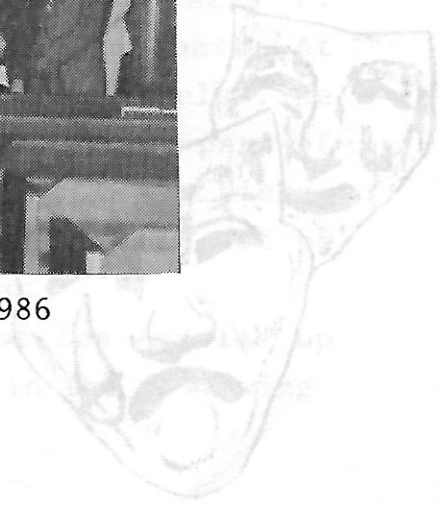
Hope Lutheran Church
of the Deaf
Portland, Oregon



Rev. Robert Bauer
OPEN WORSHIP SPEAKER



Congregation on Easter Sunday 1986



Thursday Event

Rev. Robert A. Bauer

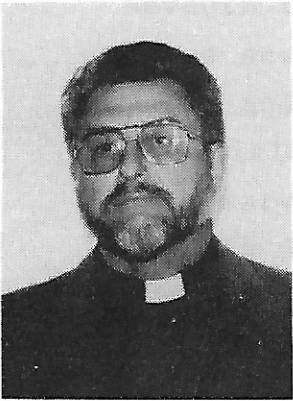
The Rev. Robert A. Bauer was born at Stony Plain, Alberta on January 27, 1930. He attended Public Schools, Concordia College, Edmonton; Concordia Seminary, St. Louis, 1956 and done Post-graduate work afterwards.

He has been Pastor of Cross of Christ Lutheran Church of the Deaf, Edmonton since 1956 (assigned to develop Missions to the Deaf in the Western Provinces).

Received 10, 25, 30 year "Appreciation Award" from LCMS Board for Mission Services.

Founder and Executive Director of Pax Natura Society for Rehabilitation of the Deaf. He has done various church outreach and community work among the deaf in Canada for many years.

Rev. Bauer is married to Eleanor Klann and they reside in Edmonton, Alberta. They have four children: Kathy, Martin, Christopher, and Jean.



Rev. Robert Bauer
OPEN WORSHIP SPEAKER

THURSDAY RECEPTION

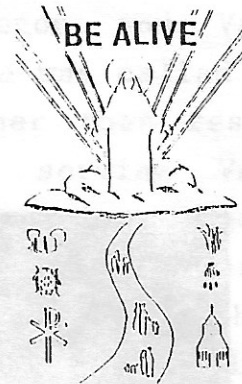
INTERNATIONAL CHEESE MIRROR

FRESH FRUIT MIRROR

DECAFFEINATED COFFEE

TEA AND PUNCH

OPENING WORSHIP
of the
INTERNATIONAL LUTHERAN DEAF ASSOCIATION
10th Biennial Convention



JULY 6, 1989

SKIT COMPETITION

Four deaf churches will compete for the First, Second, and Third Place Skit Competition Awards.

Hope Lutheran Church of the Deaf, convention host, will give a closing skit.



Friday Event

BUS RIDE
Evergreen Stage Line



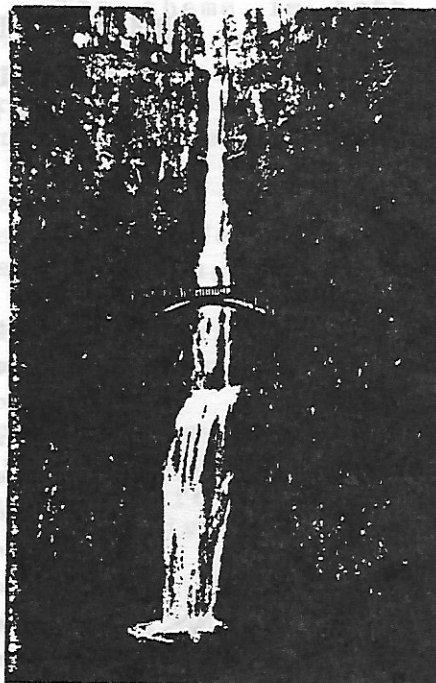
Gray Line



ROSE GARDENS



MULTNOMAH FALLS



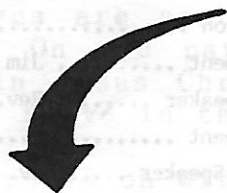
1:00 p.m. (Group 1)
7:00 p.m. (Group 2)

Hotel Departures

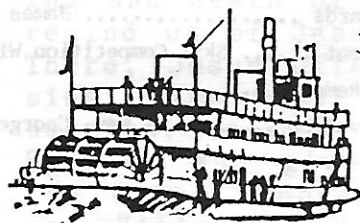
12:00 p.m. (Group 1)
12:20 p.m. (Group 2)

Hotel Arrivals

8:00 p.m. (Group 1)
9:00 p.m. (Group 2)



STERNWHEELER "COLUMBIA GORGE"



3:00 p.m. (Group 1 & 2)



DINNER



BOAT RIDE

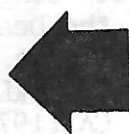
FAMILY STYLE BAR-B-QUE

Grilled Hamburgers and Hot Dogs
Spaghetti
Baked Beans and Corn-on-the-Cob
Fresh Watermelon
Breads and Condiments
Dessert
Coffee, Tea and Decaffeinated Coffee
*Milk and Soft Drinks
*Extra Charge

5:00 p.m. (Group 1 & 2)

SLIDE SHOW PRESENTATION
OF THE
Lutheran Deaf Churches
Presented by
The Northwest Region ILDA
and a
CLOSING DEVOTION

9:30 p.m. (Group 1 & 2)



Saturday Event

ILDA BANQUET

July 8, 1989



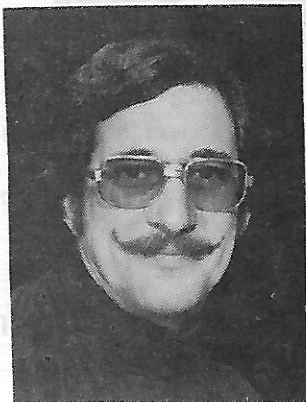
THE 10TH BIENNIAL CONVENTION OF THE INTERNATIONAL LUTHERAN DEAF ASSOCIATION

RED LION INN-LLOYD CENTER
PORTLAND, OREGON

ENTERTAINMENT



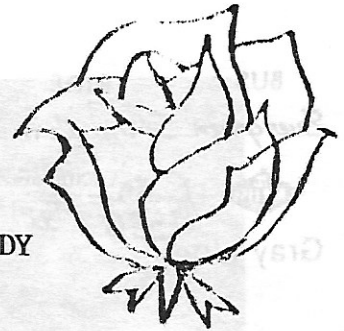
BANQUET SPEAKER



Rev. G. Natonick
Christ Lutheran Church of the Deaf
Silver Spring, MD

BANQUET

RED LION MARKET SALAD
TENDERLOIN OF BEEF BURGUNDY
CARROTS AND GREEN BEANS
ROLLS AND BUTTER
DECAFFEINATED COFFEE
MILK OR TEA



PROGRAM

Master of Ceremonies Richard French
Invocation Rev. David Carstens
Banquet
Introduction Lester Ahls
Entertainment Jim & Sandy McKnight
Banquet Speaker Rev. George Natonick
Entertainment Rosy the Clown
Synodical Speaker Rev. Rodney Rynearson
Entertainment Nora Peacock
Award Presentations:
Right Hand Elmer Francisco
Banner Awards Ronald Madding
Skit Awards James Drake
Entertainment Skit Competition Winners
Impromptu Remarks ..
Closing Devotion Rev. George Ring



Rev. George Natonick

The Rev. George Natonick was born at East Paterson, NJ. He attended Concordia Junior College, Bronxville, NY, Concordia Senior College, Fort Wayne, IN (BA 1964); Concordia Seminary, St. Louis, MO (M. Div. 1968), and Lewis and Clark College, Portland, OR (M. Sp. Ed. 1974).

First Congregation as Pastor was Hope Lutheran Church of the Deaf, Portland, OR (1968-1974); Interpreter and Counselor at Portland Community College, Portland, OR (1972-1974), and Counselor for the Hearing Impaired at San Jose, CA (1977-1979).

He has been Pastor of Christ Lutheran Church of the Deaf, Silver Spring, MD and Lutheran Campus Chaplain at Gallaudet University, Washington, DC since 1979.

Rev. Natonick is married to Marlys-Jean (nee Schiller) since 1967. They have two sons: Matthew (1976) and Jonathan (1980).

Sunday Event

Rev. Rodney R. Rynearson, Ed., D.



Rev. Rodney R. Rynearson
Sunday Bible Class Leader

The Rev. Rodney R. Rynearson was born at Leigh, NE in 1935. He graduated from Concordia Seminary, St. Louis, MO (1959) and received his Doctor of Education Degree from Wayne State University, Detroit, MI (1985).

Ministry to the Deaf are as follows: Faith Lutheran Church, Spokane, WA and Christ Lutheran Church, MT (1959-1966); Alpha Lutheran Church and National Institute of the Deaf, NY (1967-1973).

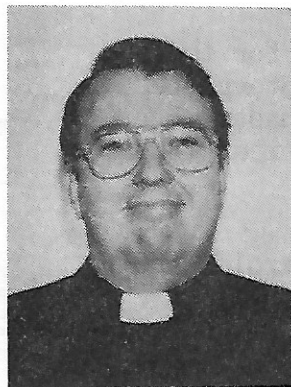
In addition, Dr. Rynearson has also served as Regional Counselor, Pacific Coast Region (1964-1967); Chairman, Ephphatha Conference (1967-1974); Pastoral Advisor, ILDA (1968-1976), and a Distinguished Lt. Governor, Kiwanis International, Detroit, MI (1984).

Dr. Rynearson is married to Rhoda (nee Ryan) and they reside in St. Louis, MO. They have three sons: Timothy, Stephen, and Peter.

SUNDAY BREAKFAST

Chilled Orange Juice and Apple Juice
Assorted Pastries
Butter and Jam
Coffee, Tea, Milk

Rev. Shirrel W. Petzoldt



Rev. Shirrel Petzoldt
Worship Service Speaker

The Rev. Shirrel W. Petzoldt was born at Perryville, MO in December, 1948. He attended the Lutheran grade school there. Graduated from ST. Paul's College High School in Concordia, MO (1966); Concordia Senior College, Fort Wayne, IN (BA 1971) and Seminex, St. Louis, MO (1975).

First Congregation as Pastor was Hope Lutheran Church of the Deaf, Portland, OR (1975-1982). He passed the Colloquy Board program of the Lutheran Church-Missouri Synod (1976).

He has been Pastor to Good Shepherd of the Deaf Lutheran Church, Toledo, OH since 1982. Pastoral Advisor to International Lutheran Deaf Association since 1987.

Rev. Petzoldt is married to Janet (nee Bunke) and they reside in Toledo, OH. They have a daughter Joy and son Andrew.

*Our Grateful Appreciation To Those Who
Helped Reach The ILDA Goal of \$10,000+.

NORTHWEST REGION OF LUTHERAN CHURCHES

Hope Lutheran, Portland, OR	\$3,067.89
Salem Lutheran, Salem, OR	500.00
Faith, Spokane, WA	75.00
Our Redeemer, Seattle, WA	57.00
Northwest Regional ILDA '88 Conference, Issaquah, WA	25.00
Cross of Christ, Edmonton, AB, Canada	10.00
Christian Deaf Centre, Calgary, AB Canada	
Christ Lutheran, Great Falls, MT	
Trinity Lutheran, Vancouver, BC Canada	

ORGANIZATIONS AND INDIVIDUALS

AAL Branches of Oregon (12)	3,015.00
*(Continue to receive funds after Printing of Program Book)	
Our Redeemer Deaf Ladies Aid, Seattle, WA	420.00
Junior ILDA, Portland, OR	220.00
Mr. & Mrs. John Kaufman, Eugene, OR	160.00
Rev. & Mrs. William Ludwig, Seattle, WA	100.00
Hope Lutheran Ladies Aid, Portland, OR	65.00
National Fraternal Society of the Deaf, Portland, OR	25.00
Ronald Grapatin, Euclid, OH	10.00

DEAF MISSION PROJECTS

ILDA Boosters (300 Individual Names)	600.00
AAL - Robert A. Buth	100.00
Christ Lutheran Men's Breakfast Club, Silver Spring, MD	100.00
Pilgrim Lutheran, Los Angeles, CA	100.00
Christ Lutheran, Silver Spring, MD	50.00
Dixie Deaf Lutheran Conference	50.00
Episcopal Conference of the Deaf, Portland, OR	50.00
St. Matthew Lutheran, Elmhurst, NY	50.00
St. Philip's Lutheran, Philadelphia, PA	50.00
Professional Hearing Aid Dispensers	20.00

TOTAL = \$8,919.89

* * * * *

SPECIAL THANKS TO

compliments of



**FRATERNAL BENEFITS
AND FINANCIAL SERVICES
FOR LUTHERANS**

Many thanks to the Oregon AAL Branches for their for their fund raising projects for interpreter services. Pencils, napkins, and pads were provided by the National Home Office from Appleton, WI.

CONVENTION SPEAKERS:

Rev. R. A. Bauer, Mayor Bud Clark, Rev. G. Natonick, Rev. S. Petzoldt and Rev. R. R. Rynearson, Ed., D.

RED LION INN-LLOYD CENTER

Beverly Nelson, Convention Coordinator and Staff

GREATER PORTLAND CONVENTION & VISITORS ASSOCIATION, INC.

Brochures and typewriters.

NORTHWEST REGION PASTORS

<u>CHURCH</u>	<u>PASTOR</u>	<u>LOCATION</u>
Christian Deaf Centre	Rev. O. Anderson	Calgary, AB, CAN
Cross of Christ	Rev. Robert Bauer	Edmonton, AB, CAN
Bethany	Rev. Wm Ludwig	Everett, WA
Christ	Mr. G. Berninghaus	Great Falls, MT
Hope	Rev. D. Carstens	Portland, OR
Our Redeemer	Rev. Wm Ludwig	Seattle, WA
Faith	Rev. M. Hewitt	Spokane, WA
Calvary	Rev. Wm Ludwig	Tacoma, WA
Trinity	Rev. W. Bottlinger	Vancouver, BC, CAN

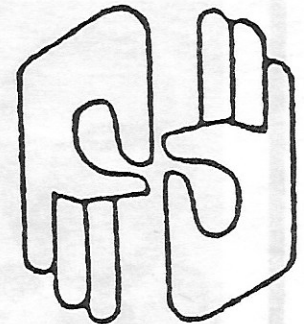
1988 - 1990 NORTHWEST REGION OFFICERS

<p>PRESIDENT Ronald Madding Portland, OR</p> <p>SECRETARY Helen Drake Portland, OR</p>	<p>VICE PRESIDENT Larry Gorton Spokane, WA</p> <p>TREASURER Elmer Francisco Spokane, WA</p>
<p>PASTORAL ADVISOR Rev. David Carstens Portland, OR</p>	

* * * * *

**INTERPRETERS
at the
ILDA Convention**

Jim McKnight, Coordinator



Cleo Arne Aloha, Oregon	Grace Baranski Portland, Oregon	Laura Campbell Tigard, Oregon	
Eileen Carney Portland, Oregon	Maria Cogle Portland, Oregon	Judy Greene Portland, Oregon	Julie Moore Portland, Oregon
Holly Hoffnung Portland, Oregon	Dana Huitt Portland, Oregon	Sandy McKnight Portland, Oregon	Nora Peacock Portland, Oregon
	Denise Wetzler Portland, Oregon	Lynne Wright Portland, Oregon	

The 10th Biennial Convention of the
INTERNATIONAL LUTHERAN DEAF ASSOCIATION
July 6-9, 1989



TENTATIVE SCHEDULE

THURSDAY, JULY 6, 1989

- 1:00 p.m. Registration
- 5:00 p.m. Supper On Your Own
- 6:30 p.m. Open Worship
- 7:30 p.m. Orientation/Welcome
- 8:00 p.m. Skit Competition
- 9:30 p.m. Reception/Fellowship
by Hope/NW Region ILDA

FRIDAY, JULY 7, 1989

- 8:00 a.m. Registration
- 8:30 a.m. Opening Devotion
- 9:00 a.m. 1st Business Session
- 10:45 a.m. Lunch On Your Own
- 12:00 p.m. Bus Ride to Park (1)
- 12:20 p.m. Bus Ride to Park (2)
- 1:00 p.m. Bus Ride to Falls (1)
- 1:30 p.m. Bus Ride to Locks (2)
- 2:15 p.m. Bus Ride to Locks (1)
- 3:00 p.m. Boat Cruise
- 5:00 p.m. Dinner
- 7:00 p.m. Bus Ride to Hotel (1)
- 7:00 p.m. Bus Ride to Falls (2)
- 8:00 p.m. Buses at Hotel (1)
- 9:00 p.m. Buses at Hotel (2)
- 9:30 p.m. Slide Show/Closing Devotion

SATURDAY, JULY 8, 1989

- 8:00 p.m. Registration
- 8:30 p.m. Opening Devotion
- 9:00 p.m. 2nd Business Session
- 10:30 a.m. Coffee Break
- 10:45 a.m. 3rd Business Session
- 12:00 p.m. Lunch On Your Own
- 1:30 p.m. 4th Business Session
- 2:45 p.m. Coffee Break
- 3:00 p.m. 5th Business Session
- 5:00 p.m. Adjournment
- 6:30 p.m. Banquet/Entertainment

SUNDAY, JULY 9, 1989

- 7:00 a.m. Continental Breakfast
- 9:00 a.m. Bible Class
- 10:00 a.m. Worship Service/Holy Communion
Installation of Officers
ILDA Banner Given to 1991 ILDA Host
- 12:00 p.m. Convention Adjourned
- 1:00 p.m. Check Out!



I. L. D. A. BOOSTERS

A

Acrey, Arlene
Adair, Edward
Albert, Edith
Allen, Arthur
Allen, Doris
Altheide, Marian
Altheide, Theodore
Anderson, Rosemary
Armtzen, Harold
Ash, Christine

B

Bachman, Gayle
Bachman, Gordon
Bailey, Rev. Clark
Bailey, Louise
Bain, Alice
Barwiolek, Alan
Barwiolek, Irene
Barwiolek, Stanley
Bauer, E.
Bauer, Rev. Robert
Bergstresser, Rev. Edwin
Bergstresser, Nancy
Berlsen, Niels
Berry, Raymond
Blakely, Ethel
Blakely, Harold
Blaylock, Carol
Boesen, Edna
Borcila, Veronica
Borgens, Leslie
Borger, Vicar Bryan
Bowman, Elizabeth
Bowman, Mike
Brown, Ruth
Burford, Mildred
Burford, Warren, Sr.
Burgress, Frances
Burgress, Mary
Burgress, Ray

C

Cardo, Marie
Carstens, Rev. David
Carter, Ken
Case, Glenna
Case, Harry

Catron, Charlotte
Cartron, Clyde
Checca, Ruth
Cheese, Mary
Clark, Florence
Clark, Kenneth
Clarke, Christobel
Cochrane, Mabel
Coyle, Darla
Crossen, Phyllis
Crossen, Richard
Cunningham, Enos
Cunningham, Ruth
Cupps, Edwin
Cupps, Ruth

D

Dale, Margaret
Davidson, Robert
Deeds, Donna
Deeth, Gregory
Dessosiers, Linda
Dischinger, Barry
Drake, Clifford
Drake, Helen
Drake, James
Drake, Lynn
Drake, Stephen

E

Elliott, Judy
Elliott, Tyro
Engblom, John
Ercolino, Gail
Ernster, Aldine
Eversaul, Ruth

F

Finke, Alma
Ford, Garland
Ford, Glenna
Foss, Ruth
Francisco, Millie
Frank, Lois
Frank, Pearl
Frank, Ralph

I. L. D. A. BOOSTERS

G

Garrett, Arthur
Gehm, Paul
Gehm, Robert
Gehm, Rosie
Glenney, Dan
Glenney, Kathy
Gore, Eileen
Gore, Robert
Gorton, Jane
Gorton, Larry
Grady, Donna
Graham, Josephine
Grann, Don
Grann, Dorislee
Green, Arthur
Guerre, Cari

H

Harris, Florence
Harris, Robert
Herzog, Adolph
Herzog, Catherine
Hewitt, Rev. Martin
Hill, Charles
Hill, Geanne
Holmes, Joyce
Hopper, Foster
Hopper, Myrtle
Hughes, Earl
Hughes, Elvira
Hughes, Harold

J

Jacques, Dorothy
Jeffries, Solomon
Jeffries, Thelma
Jitaru, Vasile
Johnson, Edward
Johnson, Marguerite

K

Kelly, Wayne
Kemmet, Evelyn
Kieffer, Laura
Kieffer, Louis
Klein, Genevieve
Klein, Steven
Kraynik, Lena

Koshelnik, Edward
Koshelnik, Evelyn
Kooser, Alice
Kopich, Iva
Kotal, Charles
Kotal, Lee Ann
Kuenzi, Gloria
Kuenzi, Lewis
Kuhns, Anna
Kuhns, George

L

Lauer, Virginia
Lawther, Grace
Leach, Clifford
Leach, Ruth
Leber, Rev. Donald
Lewis, Fred
Lewis, Sandra
Lockard, Beth
Lockard, Bill
Logue, Marian
Lombard, Jack
Lombard, Marilyn
Lords, Priscilla
Lotinsky, Olga
Lotinsky, Peter
Ludivico, Ruth G.
Ludovico, Ruth D.
Ludwig, Sigrid
Ludwig, Rev. William
Lyon, Victor

M

Madding, Mae
Madding, Ronald
Maier, Beth
Maier, Edward
Marco, Emma May
Mayberry, Neil
Mayberry, Shirley
McCall, Betty
McCall, Harvey
McEachern, Rena
McFarland, Beulah
McKnight, Billie Jean
McKnight, James, Sr.
McKown, Betty
McKown, Richard

I. L. D. A. BOOSTERS

M

McVicker, Elmer
Mercer, Bob
Mercer, Doris
Mercer, Lois
Meyer, Bonnie
Meyer, Lee
Miller, Elizabeth
Miller, Judy
Miller, Mary
Miller, Richard
Miller, Stanley
Millikan, Frances
Morgan, Elizabeth
Morris, Gary
Mowl, Betty
Mowl, Donald
Mowl, Mary
Mowl, Merwin
Moxley, Earl
Moxley, Marjorie
Muldoon, Elizabeth

N

Naumann, David
Neryahr, Rose
Nusbaum, Audrey
Nygaard, Linda

O

Ogle, Irene
Oliver, Carroll
Olson, Janis
Otterman, Frieda
Otterman, Harry
Owens, Marilyn

P

Pedersen, Lois
Petersen, C.
Petersen, Florence
Petersen, Nick
Peterson, Waunita
Petrowske, Harry
Petzoldt, Janet
Petzoldt, Rev. Shirrel
Phillips, Paul
Phillips, Pauline
Poff, Jane

Presley, Ermalean
Pulves, Elizabeth
Purcell, Susan

Q

Quattrone, Lillian

R

Randolph, Albritton
Ratoezyke, Sophia
Raymond, Frances
Revelle, Lloyd
Rein, Laverne
Rein, Vera
Riddlebaugh, John
Riddlebaugh, Sarah
Rinehart, Sylvia
Ritchey, Wayne
Robinson, Emogene
Robinson, Willard
Rose, Beryl
Rose, William
Rossell, Faye
Rossell, Marion, Sr.
Rute, Nancy
Rute, Stephen

S

Saraka, Patricia
Saraka, John
Scheiderer, Daniel
Scheler, George
Schulz, Clarence
Schulz, Nonie
Schultz, Dorothy
Schultz, Verna
Seeger, Rev. Mark
Sharp, Richard
Siitas, Niina
Skalicky, Harold
Skalicky, Katherine
Snyder, Howard
Snyder, Lois
Snyder, Viola
Stelzer, Maxine
Stewart, Gertrude
Stine, John, Sr.
Stinger, Keith

I. L. D. A. BOOSTERS

S

Stinger, Mina
Stone, Han
Strunk, Charlotte
Sue, Yachtman
Sullivan, Eugene
Sullivan, Mildred
Sylliaasen, Abel
Sylliaasen, Sophia
Swetnich, Tony

T

Tamplin, Thelma
Tatreau, Violet
Teets, Jean
Teets, Royal
Thayer, Allan
Thayer, Caroline
Thies, Rev. Del
Thies, Katherine
Thuve, Harold
Thuve, Joanna
Treibel, Arlene
Treibel, Elroy

U

Ulmer, Georgiana
Ulmer, Thomas

V

Van Aken, Francis
Van Roekel, Delva
Van Roekel, Louise
Vehrs, Jeffery
Vossler, Caroline
Vossler, Rev. Richard
Voyles, Dale
Voyles, Margie

W

Walls, Anna
Walls, Henry
Webb, Delores
Webb, Frank
Webster, Elfreda
Welch, John
Wenker, Barbara
Whittle, Tom

Wilken, Anna-Louise
Wilkinson, James
Wise, Helen
Wolfe, Ruth
Wyene, Harriette

Z

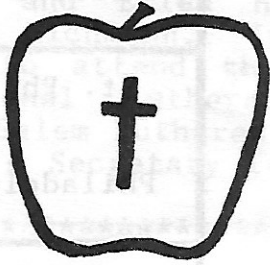
Zahler, Karen



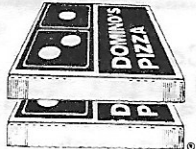
NORTHWEST REGIONAL ILDA CONFERENCE
PAX NATURA RANCH, EDMONTON, AB, CANADA
AUGUST 31, - SEPTEMBER 2, 1990

**PROFESSIONAL HEARING AID
DISPENSING & SERVICES**
223-5272 (Voice)

**GREETINGS
AND
CONGRATULATIONS
FROM THE
BIG APPLE**



**ST. MATTHEW
LUTHERAN CHURCH
& SOCIETY
OF THE DEAF, N.Y.**



**TWO PIZZAS
ONLY \$8.88!**

Two 11" Cheese Pizzas for only \$8.88!
Additional toppings 99¢, covers both pizzas.
Not valid with any other offer or coupons.
Expires

TDD (Telecommunications
Device for the Deaf) — All
Locations
(503) 231-6601

Valid at participating stores only. Not valid with any other offer. Prices may vary. Customer pays applicable sales tax. Limited delivery area. Our drivers carry less than \$20.00.

INTERNATIONAL CATHOLIC DEAF ASSOCIATION

Chapter No. 45 - Portland, Oregon

sends its greetings and best wishes
for a successful 10th Biennial Convention
to the International Lutheran Deaf Association

PILGRIM LUTHERAN CHURCH FOR THE DEAF

1233 So. Vermont Avenue

Los Angeles, CA 90006

God Loves You All

From Christ Lutheran Church of the Deaf

Silver Spring, MD (Washington DC Area)

St. Philip's Lutheran Church of the Deaf

11047 Bustleton Avenue

Philadelphia, PA 19116 (215-969-4179 TDD)

National Fraternal Society of the Deaf

Portland Division No. 41

P. O. Box 25

Canby, OR 97013

St. Matthew Lutheran Church of the Deaf

41-01 75th Avenue

Elmhurst, NY 11373

Dixie Deaf Lutheran Conference

Stephen H. Luke, Regional President

1990 Memphis Conference

Best wishes on a successful 1989 ILDA Convention
here in The City of Roses. Love in Christ,
The Episcopal Conference of the Deaf in Oregon.

WHAT IS THE I.L.D.A.?

The International Lutheran Deaf Association was founded in Chicago during the first biennial convention in 1971. The purpose, according to the revised constitution, is "to corrdinate and strengthen the religious activities and services in our congregation to help promote their growth to the highest possible level in service to their Lord and Savior, to promote the Christian faith and life of Lutheran Deaf people, all deaf individuals, and others with whom we associate; and to carry on our ministry throughout the world."

The I.L.D.A. shall communicate and convey to the deaf members the programs, plans, and goals of the Lutheran Church-Missouri Synod. It shall support lay-leadership among deaf Lutherans in all areas of faith and life.

In 1975 the members voted ratification of the revised constitution. The historic document will help develop the I.L.D.A. image and facilitate the operation and administration of the association. The members also supported the goal of recruiting as many lay people as possible and getting them actively involved in the I.L.D.A. affairs.

In 1987 the aim of I.L.D.A. is to carry out the objectives of serving the Lord in His church and to obtain the financial support that would lead to self-sufficiency. It is hoped that many programs and projects for the ministry and mission of the I.L.D.A. will become a reality.

Membership in the I.L.D.A. is open to all deaf, and is divided into three categories: ACTIVE, ASSOCIATE, AND SUSTAINING.

The I.L.D.A. relies on its official publication, THE DEAF LUTHERAN, to convey information of its activities and services to deaf Lutherans.

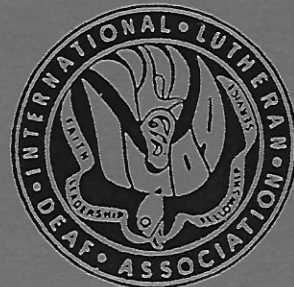
GOD'S 1000 CLUB

God's 1,000 Club was established by the I.L.D.A. Board of Directors and it aims to continue to grow.

The name "God's 1,000 Club" was chosen because first of all the work of I.L.D.A. is to get the Good News of God's Son to the deaf eveywhere. 1,000 represented the number of donors or club members we hope to enlist.

People who become members in God's 1,000 Club are asked to *contribute \$10.00 each year* thereafter. This is not a part of the regular I.L.D.A. dues and it does not pay for a subscription to THE DEAF LUTHERAN. Any donations given to God's 1,000 Club can only be used to help pay the expenses of I.L.D.A. board meetings.

See the I.L.D.A. Treasurer for details.



GOOD SHEPHERD
OF THE DEAF
LUTHERAN CHURCH

Welcome You and All
to our

LLD.A.
CONVENTION

AUGUST 3, 4, 5, 6, 1991

IN TOLEDO, OHIO

THE GLASS CITY
OF THE WORLD