

**"GOD, You are my: Shepherd, Teacher, Friend, Light and Rock"**

*The Eleventh Biennial*



**International  
Lutheran Deaf  
Association  
Convention**

hosted by

**Good Shepherd of the Deaf Lutheran Church**

5859 Elmer Drive, Toledo, OH 43615

**August 1-2-3-4, 1991**

Holiday Inn "French Quarter," Perrysburg, Ohio

# Tentative Schedule

## Thursday, August 1st

|                        |                                                             |
|------------------------|-------------------------------------------------------------|
| 1:00 p.m. to 8:30 p.m. | Registration                                                |
| 6:30 p.m. to 7:30 p.m. | Opening Worship<br>Rev. Richard Gahl, Ohio District Mission |
| 7:30 p.m. to 8:00 p.m. | Orientation/Welcome<br>Councilman Silverman                 |
| 8:00 p.m. to 8:30 p.m. | Skit's Competition                                          |
| 8:30 p.m. till ???     | Reception/Fellowship                                        |

## Friday, August 2nd

|            |                                              |
|------------|----------------------------------------------|
| 8:30 a.m.  | Opening Devotion<br>Rev. Donald Leber        |
| 8:55 a.m.  | Drawing the winner of 2-Year ILDA Membership |
| 9:00 a.m.  | First Business Session                       |
| 10:15 a.m. | Bible Study<br>Rev. Donald Leber             |
| 10:45 a.m. | Brunch                                       |
| 12:00 Noon | Tours<br>Sauder Museum or Art Museum         |
| 7:55 p.m.  | Drawing the winner of 2-Year ILDA Membership |
| 8:00 p.m.  | Second Business Session                      |
| 9:00 p.m.  | Closing Devotion<br>Rev. Lawson              |

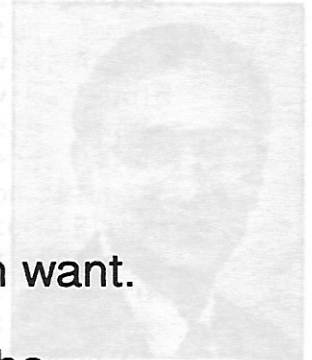
## Saturday, August 3rd

|            |                                              |
|------------|----------------------------------------------|
| 8:00 a.m.  | Coffee Served                                |
| 8:30 a.m.  | Opening Devotion<br>Rev. Bailey              |
| 8:55 a.m.  | Drawing the winner of 2-Year ILDA Membership |
| 9:00 a.m.  | Third Business Session                       |
| 10:15 a.m. | Workshop<br>Rev. Rodney Rynearson            |
| 11:15 a.m. | Lunch (On Your Own)                          |
| 12:25 p.m. | Drawing the winner of 2-Year ILDA Membership |
| 12:30 p.m. | Fourth Business Session                      |
| 1:45 p.m.  | Bible Study<br>Rev. Bailey                   |
| 2:15 p.m.  | Coffee Break                                 |
| 2:30 p.m.  | Drawing the winner of 2-Year ILDA Membership |
| 2:35 p.m.  | Fifth Business Session                       |
| 3:45 p.m.  | Workshop<br>Rev. Rodney Rynearson            |
| 4:45 p.m.  | Adjournment                                  |
| 6:30 p.m.  | Banquet                                      |

## Sunday, August 4th

|            |                            |
|------------|----------------------------|
| 7:00 a.m.  | Buffet Breakfast           |
| 9:00 a.m.  | Bible Class<br>Rev. Lawson |
| 10:00 a.m. | Worship Service            |
| 11:30 a.m. | Installation of Officers   |
| 11:35 a.m. | 1993 Host Chairman         |

# Psalm 23



The LORD is my shepherd, I shall not be in want.

He makes me lie down in green pastures, he  
leads me beside quiet waters,

he restores my soul. He guides me in paths of  
righteousness for his name's sake.

Even though I walk through the valley of the  
shadow of death, I will fear no evil, for you are  
with me; your rod and your staff, they comfort  
me.

You prepare a table before me in the presence of  
my enemies. You anoint my head with oil; my  
cup overflows.

Surely goodness and love will follow me all the  
days of my life, and I will dwell in the house of  
the LORD forever.

# Pastor Glenn O'Shoney

The Reverend Glen O'Shoney was born in Cicero, Illinois. He attended Redeemer Lutheran School, J.S. Morton High School, and completed three years at the University of Illinois before deciding to study for the ministry. He entered Concordia Seminary, Springfield, Illinois, graduating in 1962.



His first call was to establish a mission congregation in Amarillo, Texas, organized as Faith Lutheran Church, where he served as pastor from 1962 to 1967. At that time the Board for Mission Administration of the Texas District called him to begin a new mission congregation in north Houston. Under his direction, Beautiful Savior Lutheran Church came into being. In less than five years, Beautiful Savior grew to be a congregation of more than 500 communicant members and more than 800 souls.

Pastor O'Shoney attended an Evangelism Training Seminar at the Coral Ridge Presbyterian Church in Fort Lauderdale, Florida, introduced the program into his own congregation, and led Evangelism Training Seminars for pastors of the Texas District at Beautiful Savior Lutheran Church.

After serving for many years on Circuit and District committees, he was called to serve as Executive Director of the Board for Mission Administration of the Texas District and assumed that position on March 1, 1974.

He continued in the position of Executive Director of the Board for Mission Administration until June 25, 1978, when he was installed as President of the Texas District.

In May of 1986, Pastor O'Shoney received an Honorary Doctor of Laws from Concordia College in Austin, Texas "to honor his prolonged superior service to The Lutheran Church--Missouri Synod." From October of 1986 to October of 1989, he served as Chairman of the Council of Presidents for the Synod.

In October of 1989, Pastor O'Shoney accepted the call to serve as Executive Director for the Board for Mission Services of The Lutheran Church-- Missouri Synod.

Pastor O'Shoney is married to the former Sandra Kay Crewse of Canton, Ohio, and the couple has been blessed with three healthy children . . . Stephen, Susan, and Joel.



**OHIO DISTRICT  
THE LUTHERAN CHURCH — MISSOURI SYNOD**

6451 COLUMBIA ROAD • P. O. BOX 38277 • OLMSTED FALLS, OHIO 44138-9988 • PHONE (216) 235-2297

**OFFICE OF THE PRESIDENT  
THE REV. DAVID D. BUEGLER**

Dear Friends in Christ:

Greetings in the name of our Redeemer and our King!

We welcome all delegates and guests of the International Lutheran Deaf Association to the Ohio District of the Lutheran Church-Missouri Synod. From the nearly 73,000 members of our District, we commend these days of your coming together to the blessing of Almighty God.

You are meeting this year in Toledo, Ohio. Toledo is known as the GLASS CITY. During my years of ministry in Northwest Ohio, I was privileged to tour one of Toledo's many glass factories. It is another of God's miracles of nature to see raw products that bear no resemblance to the finished product be heated, treated and formed into the beautiful, crystal clear final products we all use every day.

So it is with our life in Christ. The raw product of our sinful nature is HEATED in the furnace of human affliction, TREATED by the redeeming love of our Heavenly Father, and FORMED into the vessels of His grace which are then used by Him to pour out His message of salvation on a fallen world. And that finished product, forgiven and free for service, is beautiful in the vessel of our Lutheran Deaf congregations and ministries in the crystal clear witness you make for Jesus as Lord.

We pray that this convention will be a blessing not only to all the delegates, but to the hundreds and thousands who are served through your efforts throughout the world.

God bless you all during these days of your meeting together.

Yours in Christ,

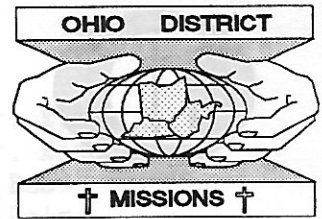
*Rev. David D. Buegler*  
David D. Buegler, President  
Ohio District - LCMS





**OHIO DISTRICT**  
**THE LUTHERAN CHURCH — MISSOURI SYNOD**

6451 COLUMBIA ROAD • P. O. BOX 38277 • OLMSTED FALLS, OHIO 44138-9998 • PHONE (216) 235-2297



THE REV. RICHARD GAHL, EXECUTIVE DIRECTOR

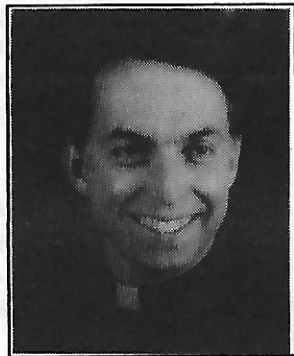
*To: Participants in the 11th Biennial ILDA Convention*

*Dear Sisters and Brothers in Christ,*

*The Board of Missions of the Ohio District extends a warm welcome to all of you who have come to the ILDA convention in Toledo. We know you will find the hospitality of Good Shepherd of the Deaf Congregation to be a pleasure for all.*

*Deaf ministry has been an important priority for the Ohio District for many years. We are proud of the ministries at Christ for the Deaf in Cleveland, Holy Cross Deaf in Columbus and Good Shepherd of the Deaf in Toledo. We commend the fine pastors and lay leaders of these congregations. Their dedicated efforts in reaching out to the lost in our state are exemplary. Their support of mission throughout the Lutheran Church Missouri Synod are most encouraging.*

*The shape of the State of Ohio has caused some to call it "Ohio: the Heart of It All." We know our Lord Jesus to be the real heart of the church with his example and spirit of love. May your convention be the opportunity for being built up in that love, the heart of it all.*



*Yours in Christ,*

*Richard Gahl, Exec. Director*  
*Ohio District - LCMS*

RWG/ka

**Serving, Leading, Linking**  
**congregations in mission.**





January 18, 1991

To: I.L.D.A. Convention Participants

In Mark 7 is written "Some people brought a man to Jesus. The man was deaf and could not speak well."

I rejoice that you are Jesus' friend. I rejoice that He is your Lord and Savior. I thank God that His Spirit keeps you strong in faith.

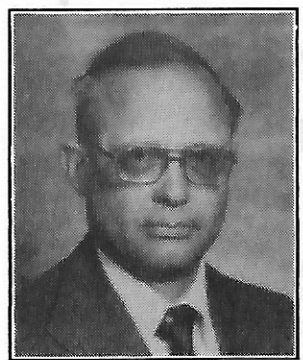
I also rejoice that Jesus' power helps you serve Him and serve as His leaders. He is doing wonderful things with and through your many acts of Christian love.

The I.L.D.A. Convention gives you an opportunity to see each other and to share His love. I thank God for bringing you safely here and pray that He continue to bless your time here.

While some of our congregations have no pastor, God is richly blessing the growth of His kingdom among us.

In Christ,

Rev. Rodney R. Rynearson, Ed.D.  
Counselor for Deaf Ministry



dt

LUTHERAN CHURCH OF THE DEAF  
31 W. Benton St.  
West Hartford, Conn. 06119  
(203) 523-0343  
Worship: 10:30 a.m.  
Bible Study: 9:15 a.m. (Sept.-May)  
Visitors to Connecticut are invited  
to worship with us  
Our 25th anniversary  
will be celebrated Jan. 15, 1992

The Toledo Division #16 N.F.S.D.  
will have a picnic  
August 10, 1991 at Walbridge Park  
across from the Toledo Zoo  
(Broadway St.)

# CITY OF TOLEDO OHIO



ONE GOVERNMENT CENTER  
SUITE 2200  
TOLEDO, OHIO 43604  
245-1001

**JOHN MCHUGH**  
MAYOR

RESIDENCE  
5876 RYEWYCK DRIVE  
TOLEDO, OHIO 43614  
866-1686

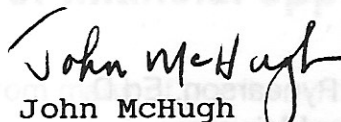
Dear Friends:

It is a pleasure to extend personally, as well as in behalf of the City of Toledo, a warm and cordial welcome to the participants of the 11th Biennial Convention of the International Lutheran Deaf Association.

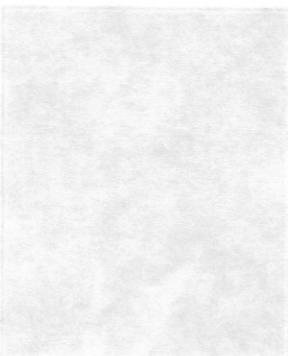
While in Toledo, I hope you will have time to get acquainted with our fine city. We have many interesting sites to visit, including great restaurants, our world famous Museum of Art, our widely acclaimed Toledo Zoo, and the historic sites along the Maumee River.

My very best wishes for a successful convention, and I hope that your visit to our fine city is most enjoyable.

Best wishes,



John McHugh  
Mayor



Duane G. Shively  
P.O. Box 527  
Sylvania, Ohio 43560  
(419) 882-4920

LUTHERAN BROTHERHOOD





# Lutherans for Life Ninth National Convention

Houston, Texas \* November 8 - 10, 1991

*"... I came that they might have life, and have it abundantly."  
John 10:10b*

May 16, 1991

To our Brothers and Sisters in the INTERNATIONAL LUTHERAN DEAF ASSOCIATION:

I greet you on behalf of the National Board of LUTHERANS FOR LIFE with best wishes and prayers for a successful and joyful convention as you gather together in Toledo, Ohio.

Surely the Holy Spirit is at work in your midst, and it will be exciting to discover the surprises He has in store for each of you whom He has gathered together for this occasion.

The challenges confronting all Christians are growing daily as traditional values are abandoned and ridiculed. Some are describing this decade as "The New Dark Ages." Thus it is good to assemble with others in order to nurture and strengthen individual faith and witness. However, for those who experience physical limitations, such as hearing disabilities, the challenges are even greater.

Our society, in departing from a Sanctity of Life ethic to a Quality of Life ethic, is increasingly finding unacceptable any perceived or real limitation. However, LUTHERANS FOR LIFE believes that the value of life ought not be based on human judgement as to its present or future potential, its burden to others or its cost to society. The value attributed to each human life derives ultimately from the One who created it and brought it into being.

Therefore, we rejoice with you in the knowledge that each one of us is precious in the sight of the Lord; that He knows us as individuals and promises to sustain us whatever the burden; and that He has a plan for each of us who, by having been born and then reborn, bring glory to His Name and honor to His Son.

So clap your hands! Sing a new song! Greet one another with a hug or a handshake of peace! And know that you are sons and daughters of the King ... wealthy beyond measure!

Your sister in Christ,

(Dr.) Jean Garton, President  
LUTHERANS FOR LIFE



## INTERNATIONAL LUTHERAN DEAF ASSOCIATION

1333 South Kirkwood Road  
St. Louis, MO 63122  
TDD 1-800-433-3954  
Voice (314) 965-900, Ext. 313

Dear Brothers and Sisters in Christ,

### Welcome to Toledo, Ohio!

As your President, it is my great pleasure to greet all of you in the blessed name of our Savior Jesus Christ, as we begin our **11th Biennial ILDA Convention**. Our gracious host congregation, *Good Shepherd Lutheran of the Deaf*, has worked very hard. They have done an excellent job in planning and preparing for a most successful convention. Please join your hands in prayer! And pray with me for God's help, guidance, and blessing, as we begin another International Lutheran Deaf Association Convention in the year of our Lord 1991.

I am sure the time spent here will be memorable and worth-while. As you enjoy meeting old & new friends, going on tours, and most of all learning what this year's convention theme is about...

### GOD YOU ARE!

Remember the purpose we come together is to celebrate HIM! He is love! He is everything! "*God you are our bright and morning star*" [Revelations 22:16]. There is a saying that goes like this when we consider our great God and the blessings he gives..."Close your eyes and look around. What you see while your eyes are closed rightfully belongs to you. Now open your eyes and look around. What you see with your eyes open is the blessing that God has bestowed (given) on you." Truly, our God is wonderful! May God give you His Power & His Love Always.

**Truly, God you are everything!**

In Christ,

Ronald Byington- President of ILDA

#### BOARD OF DIRECTORS

##### President

Ron Byington  
5931 W. Coldspring Rd., #15  
Milwaukee, WI 53220  
(414) 327-4686 TDD/V

##### President-Elect

Ron Madding

##### Secretary

Charles Kotal

##### Treasurer

Russel Healey

##### Pastoral Advisor

Rev. Shirrel Petzoldt

##### Counselor

Dr. Rodney Rynearson

#### REGIONAL PRESIDENTS

##### Eastern

Dennis Kondel

##### Great Lakes

Richard Crossen

##### Midwest

William Zimmerman

##### Northwest

Larry Gorton

##### Pacific

Clarence Schulz

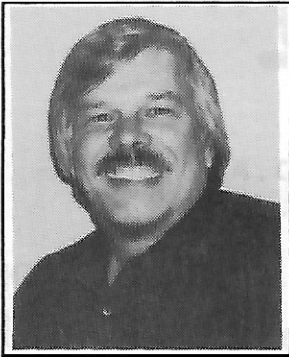
##### Central

Archie Marshall

##### Dixie

Stephen Luke

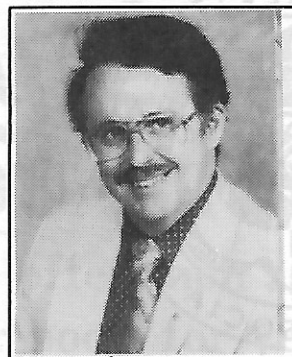
## I.L.D.A. Officers



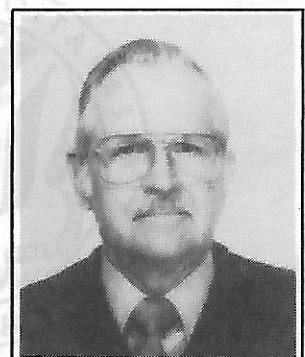
**Ronald Byington**  
President



**Ronald Madding**  
Pres.-Elect

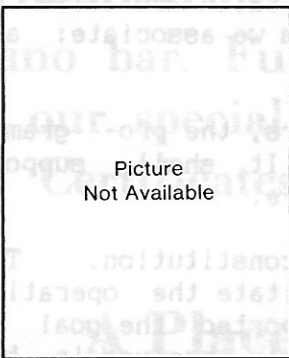


**Charles Kotal**  
Secretary



**Russel Healey**  
Treasurer

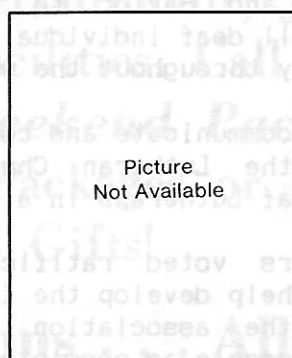
## I.L.D.A. Board Members



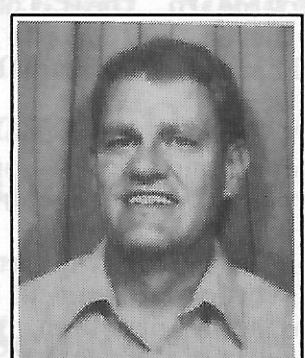
**Dennis Kinkel**  
Eastern



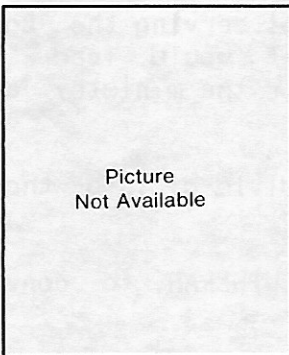
**Richard Crossen**  
Great Lakes



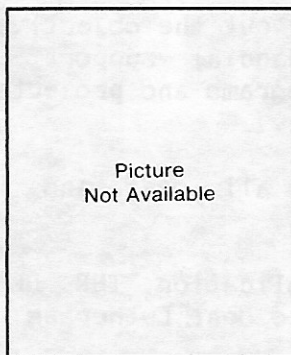
**Open**  
Midwest



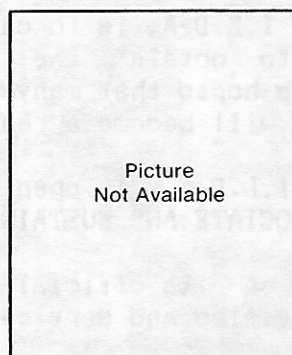
**Larry Gorton**  
Northwest



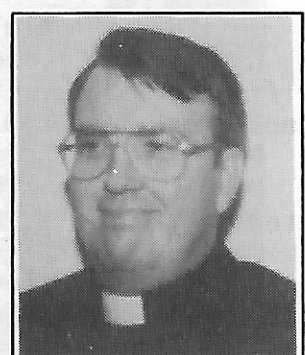
**Clarence Schulz**  
Pacific



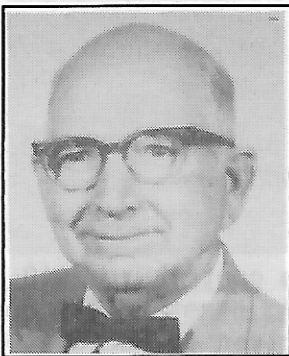
**Archie Marshall**  
Central



**Stephen Luke**  
Dixie



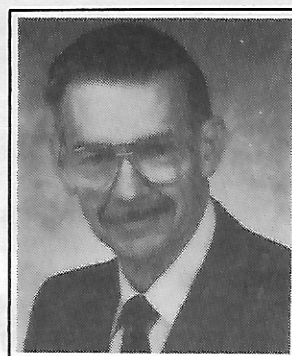
**Rev. Petzoldt**  
Pastoral Advisor



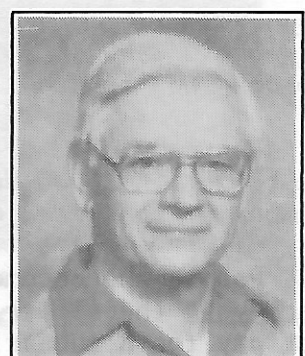
**Donald Mowl**  
Historian



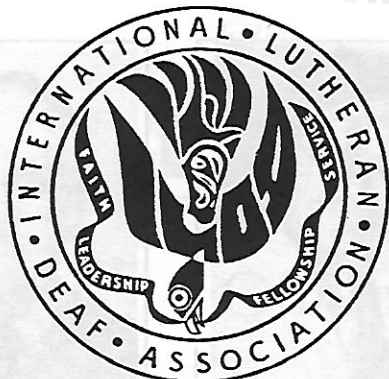
**Dr. Rynearson**  
Bd. of Missions



**Lester Ahls**  
Editor



**Elmer Francisco**  
Bus. Manager



## WHAT IS THE I.L.D.A.?

The International Lutheran Deaf Association was founded in Chicago during the first biennial convention in 1971. The purpose, according to the revised constitution, is "to coordinate and strengthen the religious activities and services in our congregation to help promote their growth to the highest possible level in service to their Lord and Savior, to promote the Christian faith and life of Lutheran Deaf people, all deaf individuals, and others with whom we associate; and to carry on our ministry throughout the world."

The I.L.D.A. shall communicate and convey to the deaf members, the programs, plans and goals of the Lutheran Church—Missouri Synod. It shall support lay-leadership among deaf Lutherans in all areas of faith and life.

In 1975, the members voted ratification of the revised constitution. The historic document will help develop the I.L.D.A. image and facilitate the operation and administration of the association. The members also supported the goal of recruiting as many lay people as possible and getting them actively involved in the I.L.D.A. affairs.

In 1987, the aim of I.L.D.A. is to carry out the objectives of serving the Lord in His church and to obtain the financial support that would lead to self-sufficiency. It is hoped that many programs and projects for the ministry and mission of the I.L.D.A. will become a reality.

Membership in the I.L.D.A. is open to all deaf, and is divided into three categories: ACTIVE, ASSOCIATE AND SUSTAINING.

The I.L.D.A. relies on its official publication, THE DEAF LUTHERAN, to convey information of its activities and services to deaf Lutherans.

### GOD'S 1,000 CLUB

God's 1,000 Club was established by the I.L.D.A. Board of Directors and it aims to continue to grow.

The name "God's 1,000 Club" was chosen because first of all the work of I.L.D.A. is to get the Good News of God's Son to the deaf everywhere. 1,000 represented the number of donors or club members, we hope to enlist.

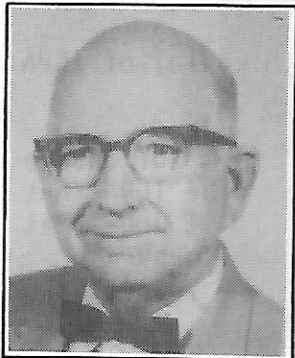
People who become members in God's 1,000 Club are asked to contribute \$10.00 each year thereafter. This is not a part of the regular I.L.D.A. dues and it does not pay for a subscription to THE DEAF LUTHERAN. Any donations given to God's 1,000 Club, can only be used to help pay the expenses of I.L.D.A. board meetings.

See the I.L.D.A. Treasurer for details.

# Good Shepherd of the Deaf Lutheran Church

## HISTORIAN MESSAGE

July 30, 1991



By the Grace of God, INTERNATIONAL LUTHERAN DEAF ASSOCIATION is now going into its 20th year of GIVING GOD GLORY, and after July 30th we will celebrate the 20th Anniversary of the Dedication of ILDA. On July 19, 1971 was the date in which ILDA was finally organized.

It is my great privilege to be with you all during the ILDA Convention week which is taking place right here in this Holiday Inn the beautiful city of Toledo, Ohio.

I know that the host of this convention have been working many tireless hours keeping up hoping to be one of the best conventions ever in the history of International Lutheran Deaf Association.

Back in the history of its foundation we see a big progress of every convention from all over this country for the past 20 years. We are looking forward having a big crowd to take part in this big event. Nevertheless we are certain that the things should be in good shape for all registrators who plan to show up at one of the most exciting events.

This is the time of year which is full of excitement. . .schools closing, rallies scheduled, programs planned. . . Convention sites prepared, ready to open for many deaf people who are attending the International Lutheran Deaf Association Convention this week-end.

Share with us and you will also share the rewards at this convention. Now is the time to map the future.

A former president was asked while in office, what takes up most of your time as President??? He replied, planning, planning, planning. We just don't realize how pressing. . .how urgent and how critical it is for us to be planning today for the ILDA's future needs tomorrow, needs years hence. Why plan? For two good reasons, to survive and to grow or succeed.

During this weekend, it is a great privilege for Good Shepherd Lutheran Church of the Deaf's congregation to welcome the delegates, members, pastors, and deaf friends of ILDA to the Holiday Inn. It is good for us to be here. It is good to know that we are all members of the same church, The Lutheran Church -- Missouri Synod. It is good that we could work together, play together, and worship together.

Over the numbers of years is past and becomes history. Each one of us is a part of that history, a part of the present and the future. Milestone mark is always a good time to look at our progress and to see if we meet the various challenges that God gives to us. However, I strongly believe that we are really very fortunate to have many good leaders who will carry on its tradition.

I am asking you to bless our ILDA and work together. We pray that if it is thy wish, those leaders of ILDA may be our spiritual shepherd for this coming year and the next two years, leading us in this convention and bring us closer to Jesus.

I find in the Bible the word "FAITHFUL". A very simple word, but quite an important word. St. Paul writes, "It is required of stewards that they be faithful". (Corinthians 4:2) In all that we have done, did we do the best job as God has given us blessings and was it to His glory. Let us all take a good look at our christian service habits.

ILDA Convention is composed of 7 regions or fields of labor, Great Lakes, Eastern, Dixie, Northwest, Midwest, Pacific and Central Regions.

I just wish to remind you all that we are celebrating 20th year, 11th Biennial of ILDA which was founded in 1971.

The forecast for tomorrow almost always predicts change. One of the problems of change is that often we cannot believe or accept it even when we see it coming. The ILDA that grows will have leaders who are able to accept the future and plan for it. I urge that many Christian members attend this convention and next to learn and face many challenges that lie ahead of us. If you cannot attend this convention this year, try and plan for the next two years which will take place in Austin, Texas.

The best way for you to know how you are going to feel about this convention is to experience it yourself.

May the Spirit of God dwell greatly in our lives and hearts as we grow and increase in our faith.

Love and Peace In Christ's work,

Donald Mowl, ILDA Historian

# Trinity Lutheran Church for the Deaf

# The Messages

## President of Good Shepherd of the Deaf Lutheran Church



Wendell T. Clark

Members of the International Lutheran Deaf Association, WELCOME to Northwest Ohio. I am President of Good Shepherd of the Deaf Lutheran Church in Toledo, Ohio. Good Shepherd is a proud church because of the relationship we have with Jesus and with the members in Toledo, Clyde, Findlay, Stryker-Edgerton-Napoleon-Defiance, and Southeast Michigan. Bible Study and Worship keep us together, keep us going and reaching out to new people and people that hurt.

I.L.D.A. brings my deaf brothers and sisters in Jesus together from far away. I am glad you are here. I praise God for the opportunity to see old friends again, and also to make new friends. May the 3 in 1 God be with you all as you celebrate, tour, study God's Word together, Worship together and receive Jesus' Body and Blood together.

---

## Co-Chairman of I.L.D.A. 1991 Convention

We welcome all of you with open arms to Toledo, Ohio, "Glass City of the World" on behalf of the convention host, Good Shepherd of the Deaf Lutheran Church and the Great Lakes Regional Conference to the International Lutheran Deaf Association 11th Biennial Convention. Your stay in Toledo and at the Holiday Inn French Quarter will be an enjoyable and memorial one.

During some of your free time, there are brochures in your packet from us. Southwyck Mall a little way from here if you wish to go there.

I want to thank especially Howard Snyder, my co-chairman. He has been a big help and support to me as co-chairman of the ILDA Convention Committee. I wish to thank all committees for all the work in fund raising efforts, the Lutheran Brotherhood for matching the funds as well as Aid Association for Lutheran, G.L.R.C. for loaning us the money, and Hope Lutheran Church of the Deaf of Portland, Oregon for providing some funds for interpreters, which enable us for a successful convention.



Warren Burford, Sr.

---

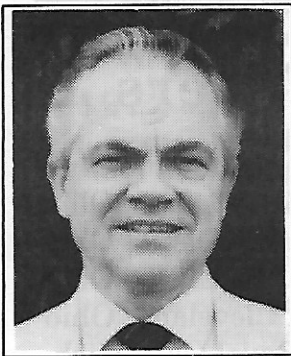
## Co-Chairman and Treasurer of I.L.D.A. 1991 Convention

It is an abundant pleasure to welcome you, God's children, to ILDA's 11th Biennial Convention at Holiday Inn "French Quarter" in Perrysburg, Ohio.

The four-day convention reminds us about the history of the Hebrew people traveling to Jerusalem every year to gather to serve the Lord. This four days is yours to be shared with those who are unable to come.

I, as co-chairman, want to thank Warren Burford, Sr., co-chairman, for his fine teamwork. We want to thank the committees for their spiritual working, and received support from Lutheran Brotherhood, Aid Association for Lutherans, International Lutheran Deaf Association, Great Lake Regional, various churches, boosters, advertisers, speakers and everyone for making this convention possible with the help from the Lord.

Shalom, and have a safe journey back home.



Howard E. Snyder

# The I.L.D.A Convention Committee



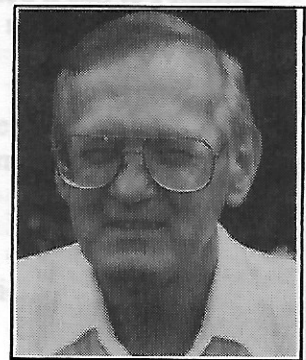
**Lois Snyder**  
*Registrar*



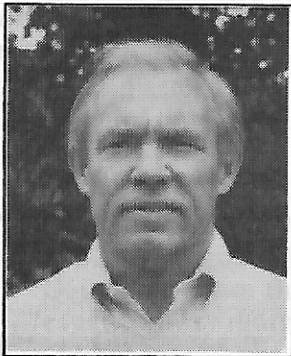
**William Gale**  
*Finance Chairman*



**Mildred Burford**  
*Reception/Banquet*



**Robert Gore**  
*Program*



**Paul Hetrick**  
*Booster*



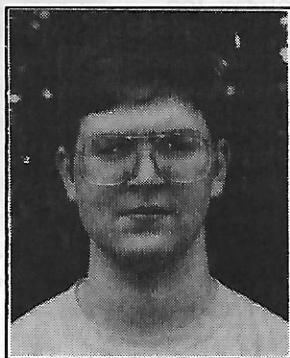
**Doris Allen**  
*Secretary*



**Arthur Allen**  
*Worship Chairman*



**Robin Homer**  
*Cameraman*



**Terry Snyder**  
*Youth Leader*

**Dagmar Clark**  
*Photographer*

**Marilyn Lombard**  
*Decorator*

**Randy Morris**  
*Co-ordinator*

## 1990-1992 Great Lakes Region Officers

PRESIDENT ..... RICHARD CROSSEN, Columbus, Ohio  
 PRESIDENT ELECT ..... WARREN BURFORD, SR., Toledo, Ohio  
 PASTORAL ADVISOR..... REV. GARY LAWSON, Cleveland, Ohio  
 SECRETARY ..... MARY TINGLER, Elyria, Ohio  
 TREASURER..... FRANK CASSESE, Cleveland, Ohio  
 HISTORIAN ..... SHIRLEY MAYBERRY, Royal Oak, Mich.



# Great Lakes Region Pastors

| CHURCH                                    | PASTOR               | LOCATION            |
|-------------------------------------------|----------------------|---------------------|
| Good Shepherd of the Deaf Lutheran Church | Rev. S Petzoldt      | Toledo, Ohio        |
| Christ Lutheran Church for the Deaf       | Rev. G. Lawson       | Cleveland, Ohio     |
| Holy Cross Lutheran Church of the Deaf    | Rev. D. Leber        | Columbus, Ohio      |
| Alpha Lutheran Church of the Deaf         | Rev. D. Boyd         | Rochester, N.Y.     |
| Our Savior Lutheran Church of the Deaf    | Rev. C. Bailey       | Detroit, Mich.      |
| Trinity Lutheran Church of the Deaf       | Rev. E. Bergstresser | Pittsburgh, Pa.     |
| St. Paul Lutheran Church of the Deaf      |                      | Flint/Lowell, Mich. |

## Anniversaries of Deaf Ministries

### — 1990 —

- 1985-1990 — 5 years — Rev. Darrel Matthew  
Rev. Richard Vossler
- 1975-1990 — 15 years — Rev. Roy Dahmann  
Rev. Shirrel Petzoldt  
Rev. Frank Silver
- 1970-1990 — 20 years — Rev. David Carstens
- 1965-1990 — 25 years — Rev. Paul Dorr  
Rev. Roger Leonhardt  
Robert Oetell (Lay Minister)
- 1960-1990 — 30 years — Rev. Orlin Anderson  
Rev. Gerhard Gehrs  
Rev. Frank Wagenknecht
- 1945-1990 — 45 years — Rev. Herbert Rohe
- 1935-1990 — 55 years — Rev. Arnold Jonas

### — 1991 —

- 1986-1991 — 5 years — Rev. Mark Anderson  
Rev. Darell Kois  
Rev. Michael MacDonald
- 1981-1991 — 10 years — Rev. Prentence Marsh
- 1976-1991 — 15 years — Rev. Ronald Friedrich  
Rev. Larry Larsen
- 1971-1991 — 20 years — Rev. Robert Muller
- 1966-1991 — 25 years — Rev. Donald Zuhn  
Rev. Russel Johnson
- 1961-1991 — 30 years — Rev. Robert Corl
- 1956-1991 — 35 years — Rev. Robert Bauer



The Family  
of  
Rev. Shirrel  
Petzoldt

Shirrel  
Joy Janet Andrew

Welcome to Toledo! During the last 2 years, we have been working hard to prepare for your arrival. Our Co-Chairmen, Howard Snyder and Warren Burford, Sr. have worked very hard. They are the best. The committees they have chosen and worked with are the best. They are people I have worked with for the last 9 years. I am proud of them all.

During this I.L.D.A. convention, you will be confronted with a few changes. There will be a healthy balance of Bible Study, and Worship, I.L.D.A. meetings and pleasure times. I feel this important, we are members of the Christian faith centered in Christ.

As you attend these opportunities of worship, and Bible Study, open your hearts and minds for Jesus to influence our lives with power from His Holy Spirit. As you attend the meetings, ask God to guide us. As you have pleasure time, ask God to protect us all. Enjoy your stay. Go home refreshed and eager to share God's love, joy and peace with all you meet.

Rev. Shirrel Petzoldt

## NOTES OF INTEREST: TOLEDO DEAF MINISTRY

### From Deaf Lutheran, Vol. 11 -- No. 3 of March, 1919

Detroit Mission -- Nothing out of the ordinary happened. The attendance at the service was about the same Sunday after Sunday.

### From Deaf Lutheran, Vol. 12 -- No. 6 of June, 1920

Akron Mission -- Average attendance at monthly services in Toledo with 15 people, but noted new faces in nearly every services.

### From Deaf Lutheran, Vol. 13 -- No. 1 of January, 1921

Cleveland Mission -- Regular services were held in Toledo, with 7 communicants. Also a number of deaf made their appearance not yet connected with the church and hoped they will come often . . . E.W.B.

### From Deaf Lutheran, Vol. 13 -- No. 2 of February, 1921

Cleveland Mission--Toledo regular services were held on January 2nd. Statistics for 1921 in Toledo were 9 voting members, 17 communicants, 24 communed, 12 services, 9 average attendance, \$56.22 free will offering.

### From Deaf Lutheran, Vol. 15 -- No. 5 of March, 1923

Detroit Mission -- Month of March was a month of rejoicing for the Detroit field. We had no pastor for the last five years. We found a shepherd of souls in Rev. J. Scheibert. He was installed in the church at Toledo on the first Sunday of the month and at every place the deaf attended the services in a good number with happiness on each and every face . . . O.C.

### From Deaf Lutheran, Vol. 15 -- No. 7 of March, 1923

Detroit Mission -- In Toledo we were gratified to note the interest people were showing in the worship services. Through the active work of the ladies of that congregation a beautiful communion set was bought, consisting of a one quart flagon, a chalice which is goldplated and a wafer plate . . . E.J.S.

### Statistic Report for 1923

Toledo, Ohio -- 1 congregation, 10 voting members, 18 communicants, 29 communed, 12 services, 12 average attendance, \$77.51 offering.

### From Deaf Lutheran, Vol. 18 -- No. 2 of 1926

Statistical Report for 1925

Toledo, Ohio -- 1 congregation, 10 voting members, 18 communicants, 36 communed, 12 services, 15 average attendance,

1 child baptized, \$104.73 free-will offering for our mission and home purposes, 7.25 free-will offering for outside purposes.

### From Deaf Lutheran, Vol. 20 -- No. 2 of 1928

Statistical Report for 1927

Toledo, Ohio -- 20 baptized members, 15 communicant members, 8 voting members, 45 communed, 16 average attendance, 12 services conducted, \$96.52 contributed for all purposes.

## **From Deaf Lutheran, Vol. 22 -- No. 2 of 1930**

Statistical Report for 1929

Toledo, Ohio -- 15 communicants, 1 baptism, 12 services, 12 average attendance, 7 instructions, 7 pastoral calls, 3 missionary calls, \$94.79 basket collection, \$26.75 for other purposes, total \$121.65, \$72.09 for deaf mute Mission Treasurer, \$26.75 for outside purposes, total \$98.84.

## **From Deaf Lutheran, Vol. 24 -- No. 8 of 1932**

Statistical Report for 1931

Toledo, Ohio -- 15 communicants, 25 communed, 11 services, contributed \$65.80.

# **HISTORY OF OUR LUTHERAN MINISTRIES FOR THE DEAF**

## **From Deaf Lutheran, Vol. 16 -- No. 2 of 1924**

**1901 - 1905** -- Rev. Ernest T. Claus of Trinity in Elkhart, Indiana was the first pastor for the deaf in Toledo. He studied Ameslan with deaf families in Elkhart and South Bend, Indiana. He preached in deaf people's homes in Toledo, Ohio once every three months from years 1901 to 1905. He preached his first sermon to the deaf in sign language on November 18, 1899. He relieved Rev. August Reinke of both Elkhart and South Bend stations, extending his labors also to Toledo, Ohio.

Elmer E. McVicker was told many years ago by a deaf couple named Mr. and Mrs. Ness that Rev. Claus came to Toledo, Ohio from Indiana once every three months to preach to the deaf from 1901 through 1905. Elmer does not recall where he had preached in Toledo.

**1906 - 1911** -- Rev. Arthur A. Boll was called from Louisville, Kentucky to Toledo, Ohio in 1906. Glenwood Lutheran Church on Monroe Street was the center for the deaf to worship in Toledo, Ohio. Rev. Boll also celebrated worship in Fort Wayne, Indiana, and Louisville, Kentucky until 1911 when he accepted a call to New York.

**1911 - 1918** -- Rev. Otto C. Schroeder of Detroit, Michigan was Toledo monthly pastor from 1911 to 1918. Trinity Lutheran Church, on Vance and Ewing then became the center for the deaf to worship. Pastor Schroeder died in 1962 in Illinois.

**1918 - 1922** -- Rev. William Gielow then was our pastor from 1918 to 1922. Trinity Lutheran Church, was still the center for the deaf to worship. Pastor Gielow passed away in Detroit, Michigan on October 19, 1941.

**1923 - 1937** -- Rev. Ernest J. Scheibert, was our pastor from 1923 to 1937. The deaf continued to meet and worship at Trinity Lutheran Church, on Vance and Ewing streets. Toledo then organized into a congregation. We had 10 voting members and listed 20 communicant members. This small flock continued under the leadership by Mr. Russow for many years. In 1925 they have pledged themselves to contribute \$7 monthly toward the support of their missionary. Rev. Scheibert was called to Chicago, Illinois serving both deaf and blind Ministry. He was first based in Columbus, Ohio, later at Cleveland, Ohio. -- A. C. Dahms

**1937 - 1953** -- Rev. Norbert E. Borchardt was based in Detroit, Michigan. He came down to Toledo, Ohio once a month to conduct the worship service at Holy Cross Lutheran Church on

Eleanor and Vermaas from 1937 to 1953 in the afternoon for 16 years. He retired as pastor of the Lutheran School for the Deaf in Detroit, Michigan and passed away on June 20, 1976.

**1953 - 1955** -- Rev. William Nehrenz -- 1953 - 1955. Pastor Nehrenz preached once a month. St. Paul Lutheran Church on Erie Street then became the center for the deaf to worship. Pastor Nehrenz accepted a call to Mexico City, Mexico. While he was in Toledo, Ohio, Pastor Nehrenz served both hearing and deaf people. In September of 1963, Pastor Nehrenz attended the Lutheran World Federation. While Helsinki, he passed away (September 22, 1963).

**1956 - 1959** -- Rev. Robert M. Corl, Jr. -- 1956-1959. Preached in Toledo at St. Paul Lutheran Church on Erie Street on fourth Sunday afternoon, every month. Pastor Corl then accepted a call to Wisconsin. The congregation decided to call the church "Good Shepherd of the Deaf Lutheran Church". Deaf President - Arnold Deak, (now deceased) and Secretary - Elmer McVicker were the leaders. Elmer still attends our worship regularly. Frank Neal (now deceased) was our Treasurer. Rev. Corl, Jr. has since retired and is currently living in Lexington, Michigan.

**1959 - 1962** -- Rev. Theodore Frederking, 1959 - 1962. He was based in Cleveland, Ohio, came to Toledo, Ohio to conduct worship on every 2nd Friday night and 4th Sunday afternoon at St. Paul Lutheran Church on Erie Street. Pastor Frederking did this for 3 years.

Elmer E. McVicker lead 1st and 3rd Sunday afternoon as layreader. Rev. T. Frederking then accepted a call to Phoenix, Arizona. Rev. Frederking passed away on June 12, 1981. Good Shepherd then started a Building fund.

**1963 - 1968** -- Rev. Martin Hewitt -- July 28, 1963 to January 14, 1968. Pastor Hewitt came every 4th Sunday morning each month. Pastor Hewitt served our congregation for 55 months. St. Paul Lutheran Church on Erie Street was the center for deaf worship. On the first, second and third Sunday mornings, Mr. Jim Storer (a hearing layreader) conducted deaf services. Pastor Hewitt helped our church to obtain our own pastor, (Rev. Larry Harris) and helped set up official officers and charter. The building fund was still growing. Elmer McVicker was the first full-time secretary. The congregation had its first board of directors. The building fund was still growing. (Rev. M. Hewitt is currently living in Spokane, Washington and still serving the deaf with services there.)

**1968 - 1970** -- First Full Time Pastor --

Rev. Larry Harris, was called to our congregation from Portland, Oregon. He was Good Shepherd of the Deaf Lutheran Church first full-time pastor, and served from January 21, 1968 thru December 31, 1970 at St. Paul Lutheran Church on Erie Street. Good Shepherd of the Deaf Lutheran Church of Northwestern Ohio was organized, with fields in Toledo, Defiance, Findlay, Ohio and Monroe, Michigan. The second board of directors and Mary Martha circle was organized. The building fund was still growing. Rev. Harris then left deaf ministry and did construction work and later became chaplain at the University Chapel in Bowling Green, Ohio. Rev. Harris is currently earning his Dr. degree in counseling at University of Toledo.

**1972 - 1978** -- Second Full Time Pastor -- Rev. August L. Hauptman was our second full time pastor, leading worship from December, 1971 thru July 23, 1978 at St. Paul Lutheran Church on Erie Street of which is 6 1/2 years. The first Toledo Circle began in October of 1972. The title Board of Directors was changed to Board of Trustees. The building fund was still growing. Under Pastor Hauptman's guidance, we purchased a church from Gloria Dei Lutheran Church on October 10, 1974. We then added new addition to our church building. The pastor's office was upstairs and the kitchen was below. Other renovations were done to the original building. Services then were at Good Shepherd of the Deaf Lutheran Church on 5859 Elmer Drive, Toledo, Ohio. We dedicated the church on November 2nd, 1975. Other Sunday afternoon services were

in Stryker, Defiance, Clyde, Findlay, Ohio and Monroe, Michigan. On each fifth Sunday afternoon, services were offered in Clyde, Ohio. Rev. A. Hauptman then accepted a call to Pilgrim Lutheran Church of the Deaf in Los Angeles, California, his native city and he retired a few years ago and still lives there.

**1978 - 1979 -- Pastoral Vacancy --** Rev. Donald Reinbolt from Gloria Dei Lutheran Church lead the services for Good Shepherd of the Deaf Lutheran Church on 5859 Elmer Drive, Toledo, Ohio each 1st and 3rd Sunday. Mrs. Edward Wymer interpreted the services. Each 2nd and 4th Sunday morning services, was lead by deaf lay leaders Howard Snyder and Paul Hetrick. On Saturday afternoon Richard Miller lead services in Defiance, Ohio. Robert Gore and Rolland Doudt lead services in Findlay, Ohio. No services was held in Monroe, Michigan during the pastoral vacancy.

**1980 - 1982 --** Rev. K. Omahr Mork was called to our congregation from Omaha, Nebraska and was the third full time pastor, at Good Shepherd of the Deaf Lutheran Church on 5859 Elmer Drive, Toledo, Ohio from January 27, 1980 to May 14, 1982 (2 years and 4 months). While he was our pastor, we built new cabinets in the church office and kitchen, and later built a storage shed. Pastor Mork resigned from his pastoral duty and moved back to his native Norway. He was the third deaf person to become a Missouri Synod pastor.

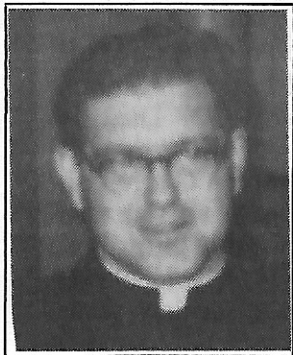
**1982 - Pastoral Vacancy**

Rev. Larry Harris was our temporary pastor and conducted the services every Sunday from May, 1982 to August 29, 1982. Rev. Larry Harris then obtained undergraduate student, Mr. Ervin Daughtery from the Fort Wayne, Indiana Concordia Seminary to conduct the worship services every Sunday morning from September 5 to December 19, 1982.

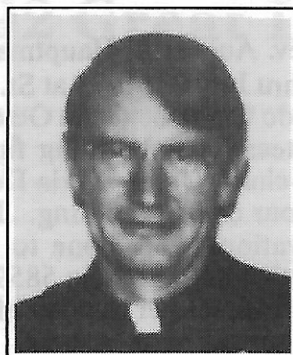
**1982 - Present --** Rev. Shirrel Wayne Petzoldt became the fourth full time pastor. We called him from the deaf church in Portland, Oregon. He started his ministry at Good Shepherd of the Deaf Lutheran Church on 5859 Elmer Drive, Toledo, Ohio on December 19, 1982. On January 2, 1983, he was installed as our pastor. The installation service was held at Gloria Dei Lutheran Church because there was not enough room at our church. Pastor Petzoldt travels to Stryker, Ohio, Findlay, Ohio, Clyde, Ohio and Monroe, Michigan and provides worship services and trains our people to lead Bible Study classes. Pastor Petzoldt is presently the I.L.D.A. Pastoral advisor .

**Past Pastors of Toledo, Ohio**

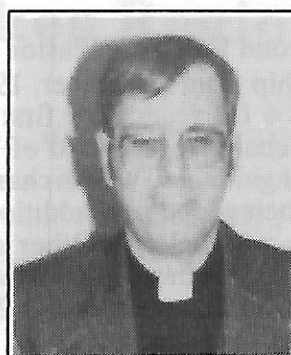
|                 |                                    |                 |                                            |
|-----------------|------------------------------------|-----------------|--------------------------------------------|
| 1901-1903 ..... | Rev. Claus (Ft. Wayne)             | 1956-1959 ..... | Rev. Robert Corl, Jr. (Local)              |
| 1903-1911 ..... | Rev. A. Boll                       | 1959-1962 ..... | Rev. Theodore Frederking (Cleveland)       |
| 1911-1918 ..... | Rev. O. C. Schroeder               | 1963-1968 ..... | Rev. Martin Hewitt (Cleveland)             |
| 1918-1922 ..... | Rev. William Gielow                | 1968-1970 ..... | Rev. Larry Harris (First Residence Pastor) |
| 1923-1927 ..... | Rev. Ernest J. Scheibert           | 1971-1978 ..... | Rev. August Hauptman (Residence Pastor)    |
| 1927-1937 ..... | VACANT                             | 1978-1979 ..... | Rev. Don Reinbolt (Vacant Pastor)          |
| 1937-1953 ..... | Rev. Robert E. Borchardt (Detroit) | 1979-1981 ..... | Rev. Omar Mork (Residence Pastor)          |
| 1953-1955 ..... | Rev. E. Nehrenz (Local)            | 1981.....       | Rev. Shirrel Petzoldt (Residence Pastor)   |



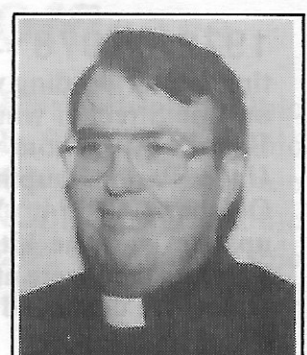
**Rev. Larry Harris**  
1968-1970



**Rev. August Hauptman**  
1971-1978

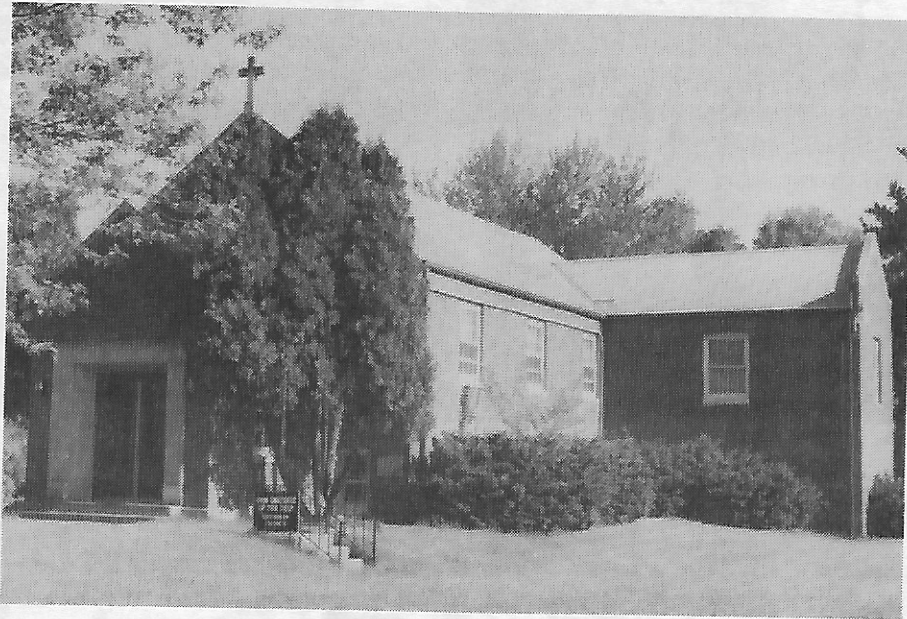


**Rev. Kjell Omar Mork**  
1979-1981



**Rev. Shirrel Petzoldt**  
1981-Present

# Good Shepherd of the Deaf Lutheran Church



**Toledo Area**



**Findlay Area**



## Stryker Area



## Clyde Area



---

## Trinity Lutheran Church for the Deaf Pittsburgh Area





# Holiday Inn®

## F&E FRENCH QUARTER

Enjoy the fabulous amenities we offer such as two domes (adult and family), two indoor/outdoor pools for year'round comfort, one seasonal outdoor pool, sauna, whirlpool, ping-pong, billiards, putting green, game room and more. *J. Patrick's Pub & Restaurant* offers live entertainment; *Jackson Square*, piano bar. Full convention facilities. Call for information on our special *Get-A-Way Weekend Packages*. Our Gift Certificates for Weekend Packages or Dining make fabulous Gifts!

**A Place for All Reasons . . . All Seasons!**



Located in Perrysburg, Ohio off I-75 at Exit 193  
For brochures or additional information; write to  
P.O. Box 268, Perrysburg, Ohio 43551 or call (419) 874-3111



# The DEAF LUTHERAN



Official Publication of

## The International Lutheran Deaf Association

National

Regional

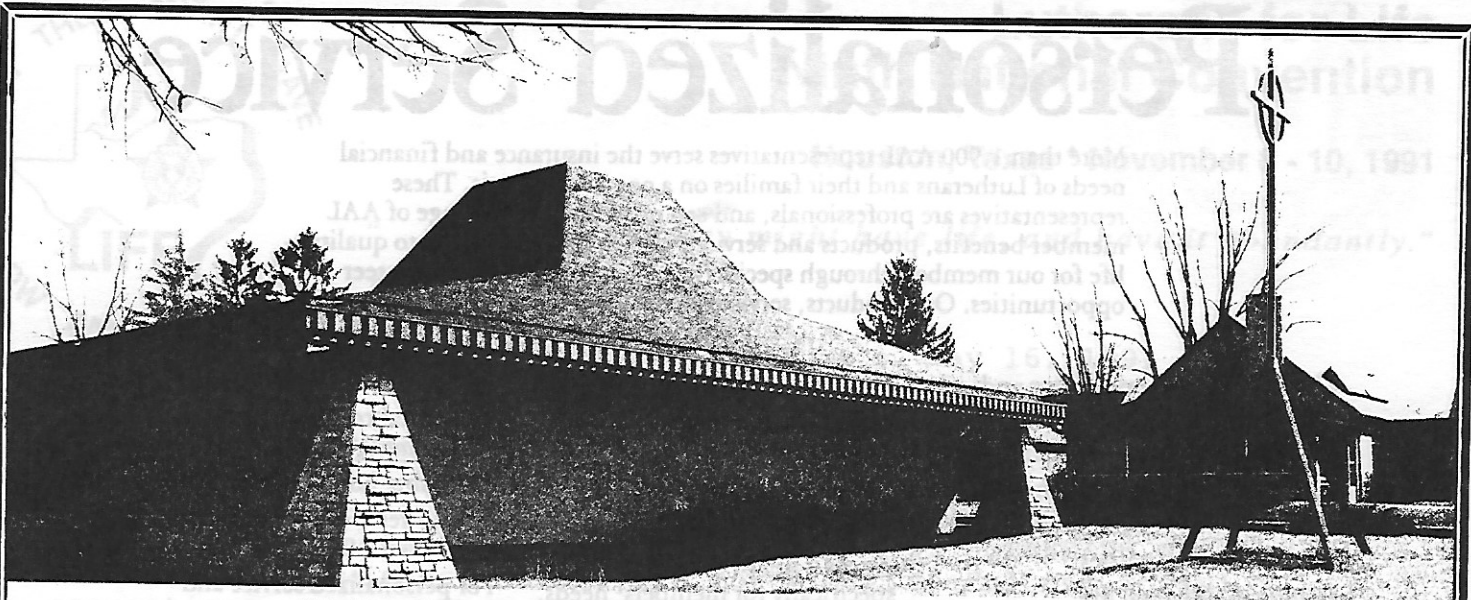
Synod

World

*Publishing News of Interest to Deaf Lutherans  
The Lutheran Church—Missouri Synod*

Subscription rate \$5.00 annually or \$4.50 blanket (church) plan.

**Elmer D. Francisco, Bus. Mgr.**  
**10004 E. Mission**  
**Spokane, Washington 99206**



## Holy Cross Lutheran Church of the Deaf

360 Morse Road Columbus, Ohio 43214-1722

Phone: (614) 885-3362

Sunday worship 10:30am

Bible Study:

Holy Cross on Sunday 9:15am

C.C.E.C. on Wednesdays 10:30am

C.C.H. on Wednesdays 9:30am

Stephen Ministry on Saturdays 10:00am

## OUR SAVIOR LUTHERAN CHURCH OF THE DEAF

When in Detroit,  
Join us for worship  
and fellowship

Sundays

- Service 9:30 a.m.
- Bible Study 10:45 a.m.

Rev. Clark Bailey, Pastor

Phone and TDD (313) 751-5823



At. St. Paul Lutheran Church  
202 E. Fifth Street, Royal Oak, Michigan 48067

# Personalized Service

More than 1,900 AAL representatives serve the insurance and financial needs of Lutherans and their families on a one-to-one basis. These representatives are professionals, and can offer you a wide range of AAL member benefits, products and services. We're also committed to quality life for our members through special fraternal programs and volunteer opportunities. Our products, services and programs include:

- Special fraternal programs and volunteer opportunities.
  - Free financial security analysis.
  - Retirement income planning.
  - Tax-deferred flexible annuities.
  - Life income annuities.
  - Horizon universal life.
  - Whole life.
  - Yearly renewable term.
  - Business insurance.
  - Mortgage insurance.
  - Major medical insurance.\*
  - Charitable giving.
  - A credit union designed specifically for members' needs.
  - Medicare supplement.\*
  - Disability income insurance.\*
  - Hospital confinement insurance.\*
  - Nursing home insurance.\*
  - Long-term care insurance.\*
- \* Where available.

For personalized service and quality AAL products, contact:



**David J. Modene, FIC, RHU, LUTCF, General Agent**  
Suite E, 27457 Holiday Lane, Perrysburg, OH 43551  
Office: (419) 874-4378 Home: (419) 874-1112

**Aid Association for Lutherans, Appleton, Wisconsin 54919-0001**

*Best Wishes*

## International Lutheran Deaf Association's 11th Biennial Convention

from

### Ohio School for the Deaf Alumni Association's **Columbus Colony, Inc.**

901 South Sunbury Road, Westerville, Ohio 43081

#### **Columbus Colony Housing**

1165 Colony Drive  
Westerville, Ohio 43081  
(614) 890-6152 TTY/Voice

#### **Columbus Colony Elderly Care**

1150 Colony Drive  
Westerville, Ohio 43081  
(614) 891-5055 TTY/Voice

Both facilities are designed to serve the needs of the Deaf. Inquiries invited.

Come and Join Us on Our

## **14th Annual Fall Festival** **September 8, 1991**

We will be drawing the winning raffle tickets for a total of \$10,000 cash.

*Best Wishes  
For A Successful  
I.L.D.A. Convention*

Hosted By  
Good Shepherd of the Deaf Lutheran Church

From  
**Toledo Deaf Club**

**CONGRATULATIONS AND BEST WISHES  
TO A SUCCESSFUL  
1991 I.L.D.A. CONVENTION**



**LUTHERAN CHURCH OF THE DEAF**  
31 W. Beacon St.  
West Hartford, Conn. 06119  
(203) 523-0345

Worship: 10:30 a.m.  
Bible Study: 9:15 a.m. (Sept.-May)  
Visitors to Connecticut are invited  
to worship with us!

*Our 25th Anniversary  
will be celebrated Nov. 16, 1991!*

**TRINITY LUTHERAN  
CHURCH OF THE DEAF**

409 SWISSVALE AVE. PITTSBURGH, PA. 15221

offers to the Almighty God  
for the blessing  
upon

**Good Shepherd of the Deaf  
Lutheran Church**

For their service  
as host congregation  
of 1991 ILDA Convention

**CONGRATULATIONS**

to

**Good Shepherd of the Deaf  
Lutheran Church**

for hosting

**I.L.D.A. Convention**

**August 1-4, 1991**

The Toledo Division #16 N.F.S.D.  
will have a picnic  
August 10, 1991 at Walbridge Park  
across from the Toledo Zoo  
(Broadway St.)



# PRAYERS



## For a Happy and Successful I. L. D. A. Convention Toledo - 1991!

From Your Brothers and Sisters  
in Christ at:

Holy Cross

Lutheran Church  
of the Deaf



Delavan

Wisconsin

## Our Thanks—

to the Lord, pastors, guest speakers, Lutheran Brotherhood, Aid Association for Lutherans, International Lutheran Deaf Association, Lutheran Churches of the Great Lake Region, other churches, committees and everyone who has contributed to making the 11th Biennial Convention of I.L.D.A. possible. May Lord Bless Them, ALL!

Especially THANKS to the Concordia Circuit Northwest 3 Congregations for helping with the transportations.

## I can show you a wide range of financial opportunities.

At Lutheran Brotherhood, you can benefit from many of our financial opportunities.

- Mutual Funds\*
- Annuities
- Visa Card
- Universal and Traditional Life
- IRAs
- Asset Management Account\*
- Discount Brokerage\*
- Health Insurance

Whether your commitment is large or small, our financial services are larger than life.



Duane G. Shively  
P.O. Box 527  
Sylvania, OH 43560  
(419) 882-4220



*\*Investment product transactions are conducted through Lutheran Brotherhood Securities Corp., 625 Fourth Avenue South, Minneapolis, MN. 1-800-328-4552. (In Minnesota, 1-800-752-4208 or (612) 339-8091).*

# — Boosters —

|                       |                      |                       |
|-----------------------|----------------------|-----------------------|
| Adams, Kathryn (2)    | Brinker, Sarah       | Clark, Kenneth W.     |
| Adams, Sherred (2)    | Britt Family         | Clark, Laurel         |
| Addie, Alexander D.   | Brown, June D.       | Clark, Rita J.        |
| Addie, Antoinette M.  | Brown, William R.    | Clark, Rodney         |
| Addie, John D.        | Burford, Millie      | Clark, Wendell T.     |
| Allen, Arthur G. (2)  | Burford, Warren      | Cochrane, Mabel M.    |
| Allen, Cathy          | Burgoon, Jacob       | Cole, Beverly M.      |
| Allen, Doris G. (2)   | Burgoon, Jeff        | Courtney, Katie       |
| Allen, Joyce          | Burgoon, Karen       | Crossen, Phyllis      |
| Allen, Robert         | Burgoon, Lauren      | Crossen, Richard      |
| Alliman, Dora (2)     | Burgoon, Tyler       | Dann, Carolyn         |
| Alliman, Howard (2)   | Byington, Karen Lea  | Dann, Nicholas T.     |
| Arbogash, Tom         | Byington, Robert     | Davidson, Becky       |
| Bachman, Gayle        | Carstens, Penny      | Davidson, Robert R.   |
| Bachman, Gordon       | Carstens, Rev. David | Davis, Peggy          |
| Barton, Myrtle        | Carter, Ken          | Davis, Richard        |
| Beaulieu, Donald (2)  | Case, Glenna         | Dellefamine, Marietta |
| Bergstresser's Family | Case, Harry          | Deliefemine, Mike     |
| Binn, Annette         | Chaplin, Dorothy L.  | DeMeyere, Emil J.     |
| Binn, William         | Checca, Ruth A.      | DeMeyere, Evelyn J.   |
| Blay, Sharon M.       | Clark, Dagmar L.     | Dorothy, Mosler       |
| Blevins, Martha       | Clark, Darlene R.    | Doudt, Nida           |
| Blevins, William      | Clark, Dawn          | Doudt, Paul           |
| Bowers, Aaron         | Clark, Dewayne K.    | Doudt, Rolland        |
| Bowers, Carol         | Clark, Florence M.   | Doudt, Veronia        |

---

## **Cannon Paper Company**

**152 Hamilton St. • Toledo, Ohio 43602**

**Phone 419-244-8631**

---



**CAIN'S**

**POTATO  
CHIPS &  
SNACKS**

# — Boosters —

|                       |                       |                              |
|-----------------------|-----------------------|------------------------------|
| Drake. Helen          | Homer. Rob            | McVicker. Elmer E.           |
| Drew. Ralph           | Huber. Charlene       | McVicker. Kenneth D.         |
| Eklof. Iva            | Hubet. Earl D.        | Mercer. Bob                  |
| Eklof. Royal          | Hurt. Betty           | Mercer. Lois                 |
| Elmer. Linda          | Izzi. Frank           | Miller. Elizabeth J. (2)     |
| Emerson. Marye Anne   | Jeffries. Solomon C.  | Miller. Judy                 |
| Emerson. Roland L.    | Jeffries. Thelma      | Miller. Richard C. (2)       |
| Engelgau. Edwin V.    | Jitaru. Vajile        | Miller. Stanley              |
| Engelgau. Ruth V.     | Johnson. David        | Morrin. David                |
| Ernester. Aldine      | Johnson. Marguerite   | Morris. Dennis               |
| Escover. Margaret     | Johnston. Kathleen    | Morris. Randy                |
| Ford. Garland         | Johnston. Sidney      | Mose. Jane                   |
| Ford. Glenna          | Kelly. Ethel          | Mosler. Clinton              |
| Frank. Ralph & Lois   | Kieffer. Ashley       | Mowl. Don & Mary             |
| Franks. Rodney        | Kieffer. David R.     | Mowl. Marty L.               |
| Frazier. Lee          | Kieffer. Florence     | Mueller. Verona              |
| Frazier. Shirley      | Kieffer. Jane         | Mueller. William             |
| Gale. Bill            | Kieffer. Kevin        | Mullinax. Christine          |
| Gale. Janet           | Kieffer. Kimberly     | Mullinax. Dr. Franklin       |
| Gale. Ryan            | Kieffer. Kristna      | Musgrove. Betty L.           |
| Gale. Timmy           | Kieffer. Laura A. (2) | Myers. Paul D.               |
| Galloway. Lois A.     | Kieffer. Lori         | Nadler. Arthur               |
| Gehle. Cheryl         | Kieffer. Louis M.     | Nadler. Pat                  |
| Ginter. Larry         | Kieffer. Louis R. (2) | Nagyivan. Marton             |
| Ginter. Lynn          | Kieffer. Mark         | Neal. John                   |
| Goff. Adeline         | Kieffer. Mary Beth    | Neal. Julia                  |
| Goll. Alyce           | Kieffer. Mathew       | Neal. Ruth                   |
| Goll. Bertha          | Kieffer. Mike         | Neal. William                |
| Gore. Eileen          | Kieffer. Olean        | Nelson. F. Richard           |
| Gore. Robert          | King. Blanche M.      | Nelson. Lois                 |
| Grapatin. Ronald      | Klein. Alice          | Nichols. Philippa            |
| Grimley. Danielle     | Klein. Genevieve      | Nichols. Robert              |
| Grimley. Darlene      | Klein. Leon           | Osterhoff. John M.           |
| Grimley. Dayna        | Klein. Steven         | Otterman. Frieda & Harry     |
| Grimley. James        | Kothos. Grace         | Our Savior Luth. Ch.-Deaf    |
| Grimley. John         | Kraynil. Lena         | Owens. Marilyn J.            |
| Grimley. Joseph       | Kurth. Joann R.       | Pagel. Ellen                 |
| Grimley. Michelle     | Lajiness. Marilyn     | Perry. Lynda                 |
| Hampshire. Mary       | Larsen. Rev. Larry    | Petzoldt. Janet              |
| Hanes. Gertrude W.    | Laughlin. Mona        | Petzoldt. Rev. Shirrel       |
| Hanes. William E.     | Lewis. Fred           | Pfahler. Mabel (2)           |
| Hanson. Florence      | Lewis. Sandra         | Phillips. Buelah/Carolynn M. |
| Harbison. Nancy       | Lombard. Jack         | Phillips. Paul               |
| Harbison. Tom         | Lombard. Marilyn      | Phillips. Pauline            |
| Harer. Susan          | Ludivico. Erma        | Picchrom. Jane               |
| Harris. Florence      | Ludivico. Ruth D. (2) | Pimentel. David              |
| Harris. Robert (2)    | Lukaszewicz. Henry    | Pimentel. Jason              |
| Hatton. Phyllis L.    | MacAllister. Edward   | Pimentel. Kevin              |
| Henry. Lucille        | MacAllister. Ruth Ann | Pimentel. Rebecca            |
| Herman. Laura         | Madding. Mae          | Pogacnik. Lisa               |
| Herst. Barban & Lloyd | Madding. Rhonda       | Rains. Ingibjorg             |
| Heser. Beatrice       | Madding. Ronald       | Rains. Russell               |
| Hetrick. Carolyn J.   | Marquis. Bernard      | Reamsnyder. Bob              |
| Hetrick. David        | Mayberry. Neil        | Rein. LaVerne H.             |
| Hetrick. Keith        | Mayberry. Shirley     | Rein. Vera E.                |
| Hetrick. Paul A.      | McVicker. Beth E.     | Richardson. Max              |



# — Boosters —

Riddlebaugh, John W.  
Riddlebaugh, Sarah  
Ritchey, Wayne & Patty  
Robinson, Willard & Emogene  
Rose, Beryl  
Rose, Maxine  
Rose, Ralph P.  
Rose, William  
Rossmont, Winifred  
Rubiano, Alex  
Rubiano, Darlene  
Sanderson, Robert E.  
Saraka, John  
Saraka, John M.  
Saraka, Patricia  
Saraka, Patricia A.  
Scheiderer, George H.  
Schenck, Joan  
Schenck, Richard  
Scherf, Darlene  
Schlund, Becky  
Schlund, Rev. Steven  
Schmidt, Cheryl  
Schrack, Eva  
Schultz, Donna  
Schultz, Vern  
Sears, Charles W.  
Sears, Theresa A.  
Sharer, Olga M.  
Shimp, Robert  
Short, Mary  
Sieja, Grace  
Skalicky, Harold  
Skalicky, Katherine  
Snyder, Howard  
Snyder, Lois  
Snyder, Terry  
Spradlin, Mary  
Stewart, Gertrude E.  
Stockwell, Ed & Brenda  
Suhr, Betty  
Swetnich, Tony  
Tingler, Mary  
Tingler, Richard  
Trader, Bill  
Trader, Judith  
Tscharner, Florence  
Tscharner, George  
Verwiebe, Carl  
Voss, Miles  
Voss, Pat  
Voss, Ralph  
Walker, Louise  
Walston, James  
Walsvik, Alice  
Walsvik, Arnold  
Walters, Laurice  
Walters, Paul A.  
Walton, Richard  
Webster, Elfreda  
Weitz, Marjorie  
Weitz, Richard E.  
Weitz, Vernice  
Weich, John L.  
Williams, Leon  
Wing Jr., M/M Charles F.  
Wolford, Betty J.  
Wolford, Charles B.  
Zook, Jean  
Zwirnmann, Renna  
Zwirnmann, Richard

---

## — Notes —

**I put on myself today  
the strong Name of the Trinity**

*Christ be with me  
Christ within me  
Christ behind me  
Christ before me  
Christ beside me,  
Christ to win me  
Christ to comfort  
and restore me,  
Christ beneath me,  
Christ above me,  
Christ in quiet,  
Christ in danger  
Christ in hearts of  
All that love me,  
Christ in mouth of  
friend and stranger.*

*Jesus Lutheran Church of the Deaf  
Cordially Invites "Y'all" to the*

**12th Biennial Convention  
of  
International Lutheran  
Deaf Association**

at  
the Marriott At The Capitol

in  
Austin, Texas

**June 24-27, 1993**

