

PROGRAM BOOK
ILDA CONVENTION
JULY 3 - 6, 1997

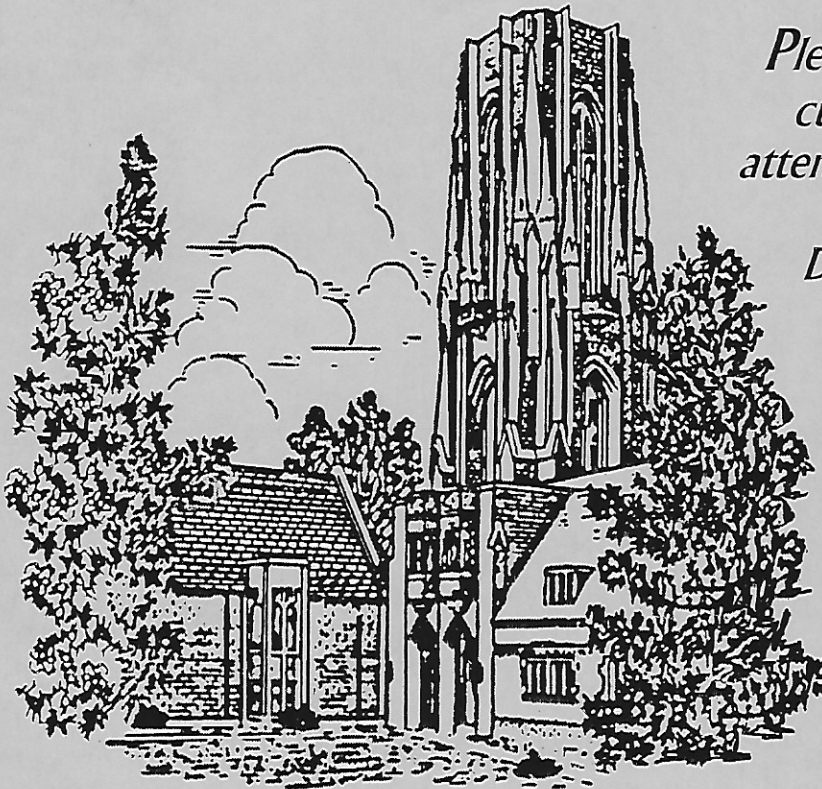


St. Louis Missouri
At the Adams Mark Hotel.
Hosted by:
Holy Cross Lutheran Church
for the Deaf

Concordia Seminary, St. Louis
and the Seminary Sign School
Welcome the
International Lutheran Deaf Association
to St. Louis

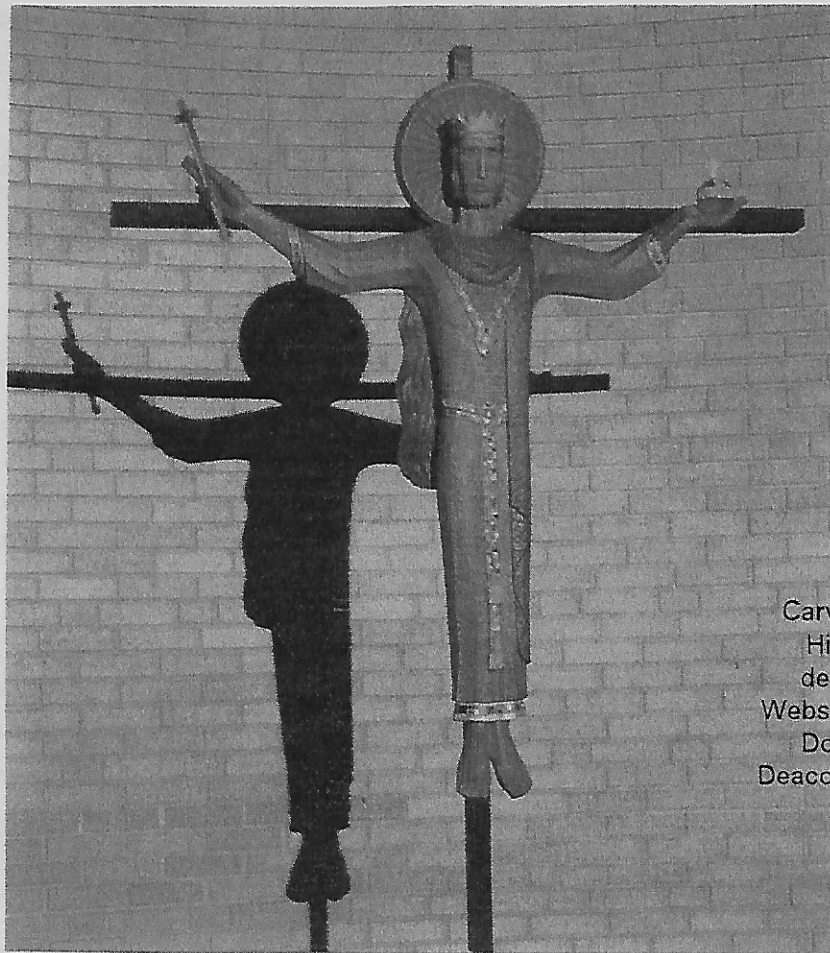
Concordia Seminary continues to train Deaf and Hearing men to become pastors in the Lutheran Church—Missouri Synod.

Concordia Seminary also offers free American Sign Language classes to all students and their families.



Please continue to pray for our current students who will be attending the Seminary during the 1997-98 school year:
David Nielsen, Fourth Year
Bill Wrede, Second Year
Dennis Konkel, First Year

**May God richly bless
your convention!**



Carved by the late
Hillis Arnold, a
deaf artist from
Webster Groves, MO.
Donated by the
Deaconess Society of
St. Louis.

Holy Cross Lutheran Church for the Deaf

**101 North Beaumont, St. Louis, Missouri 63103
[314] 533-6035 (TTY/Voice)**

"Bringing Christ to the Deaf for over 100 years"

Worship Sunday: 9:30am

Fellowship: 11:00 am

Bible Study: 11:15am

**We thank God for giving us
the opportunity to host
this 14th Biennial Convention of
The International Lutheran Deaf Association!
July 3-6, 1997**



ILDA
14th BIENNIAL CONVENTION
ADAM'S MARK HOTEL - ST. LOUIS, MISSOURI
1997 ILDA CONVENTION SCHEDULE

Thursday, July 3

1:00 p.m. - 7:00 p.m.	Registration	St. Louis Coat Room
6:00 p.m.	Opening Worship	St. Louis D & E
7:00 p.m.	Welcome/Orientation	St. Louis D & E
7:30 p.m.	Skit/Choir/Banner Competition	St. Louis D & E
9:00 p.m.	Reception/Fellowship <i>pd</i>	St. Louis D & E

Friday, July 4

7:00 a.m. - 8:30 a.m.	Registration	St. Louis Coat Room
7:00 a.m.	Continental Breakfast <i>no</i>	St. Louis D & E
8:45 a.m.	Opening Devotion	St. Louis D & E
9:00 a.m.	1st Business Session - 1 hour	St. Louis D & E
10:00 a.m.	FREE DAY	
9:00 p.m.	Fair St. Louis Firework Reception	ROSE GARDEN

Saturday, July 5

7:00 a.m. - 9:00 a.m.	Registration	St. Louis Coat Room
7:00 a.m.	Continental Breakfast <i>pd</i>	St. Louis D & E
8:15 a.m.	Opening Devotion	St. Louis D & E
8:30 a.m.	2nd Business Session - 1 hour & half	St. Louis D & E
10:00 a.m.	Coffee Break	St. Louis D & E
10:15 a.m.	3rd Business Session - 1 hour & 45 mins.	St. Louis D & E
12:00 p.m.	Lunch (on your own)	
	<i>(Special Luncheon for God's 1000 Club member only)</i>	
1:15 p.m.	Workshop	St. Louis F, G & H Director's Row 46
	<i>(ILDA Officers Training Only)</i>	
1:30 p.m.	Workshop:	St. Louis E
	"How to set up the Bible Study at anyone's home"	
	"How to inspire Deaf Lutheran Church Service"	
3:15 p.m.	Coffee Break	St. Louis E
3:30 p.m.	4th Business Session - 1 hour & half	St. Louis E
5:00 p.m.	End of Session	
7:00 p.m.	Banquet/Entertainment <i>pd</i>	St. Louis D & E

Sunday, July 6

7:00 a.m.	Brunch Breakfast <i>pd</i>	St. Louis F, G & H
8:30 a.m.	Bible Study	St. Louis E
9:30 a.m.	Worship Service	St. Louis E
	Installation of Officers	
	1999 ILDA Preview	
11:30 a.m.	Convention Adjourned	
12:00 p.m.	Hotel Check-out	



**Jr. ILDA
BIENNIAL CONVENTION
ADAM'S MARK HOTEL - ST. LOUIS, MISSOURI
1997 Jr.ILDA SCHEDULE**

Thursday, July 3

1:00 p.m. - 7:00 p.m.	Registration	St. Louis Coat Room
6:00 p.m.	Opening Worship	St. Louis A,B,C
7:00 p.m.	Welcome/Orientation	St. Louis A,B,C
7:30 p.m.	Skit/Choir/Banner Competition by Jr. ILDA	St. Louis A,B,C
9:00 p.m.	Reception/Fellowship	St. Louis D

Friday, July 4

7:00 a.m. - 8:30 a.m.	Registration	St. Louis Coat Room
7:00 a.m.	Continental Breakfast	St. Louis D
8:45 a.m.	Opening Devotion	Director's Row 43
9:00 a.m.	1st Business Session - 1 hour	Director's Row 43
10:00 a.m.	FREE DAY	

Saturday, July 5

7:00 a.m. - 9:00 a.m.	Registration	St. Louis Coat Room
7:00 a.m.	Continental Breakfast	St. Louis D
8:15 a.m.	Opening Devotion led by Jr. ILDA	Director's Row 43
8:30 a.m.	2nd Business Session led by Jr. ILDA	Director's Row 43
9:00 a.m.	Six Flags (11 yrs to 18 yrs)	
	Science Center (7 yrs to 10 yrs)	
12:00 p.m.	Lunch (on your own with parent)	
1:30 p.m.	Jr. ILDA Games	Director's Row 43
3:30 p.m.	Jr. ILDA Project Program	Director's Row 43
5:00 p.m.	Parents Pick-Up Children	
7:00 p.m.	Pizza Party/Entertainment/Music	St. Louis G

Sunday, July 6

7:00 a.m.	Brunch Breakfast	St. Louis D
8:30 a.m.	Sunday School	Director's Row 43
9:30 a.m.	Worship Service	St. Louis E,F,G,H
11:30 a.m.	Convention Adjourned	

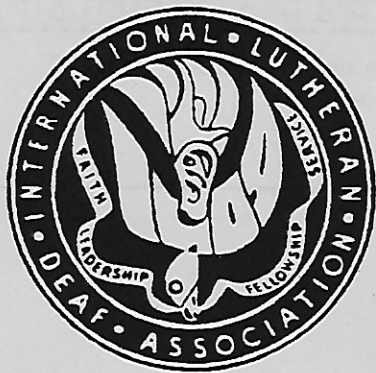


CHILD CARE
ILDA CONVENTION
ADAM'S MARK HOTEL - ST. LOUIS, MISSOURI
CHILD CARE SCHEDULE

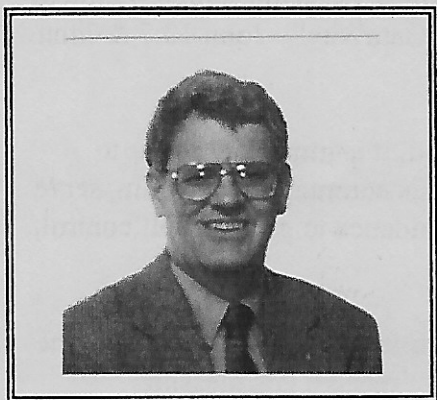
Saturday, July 5

Room:

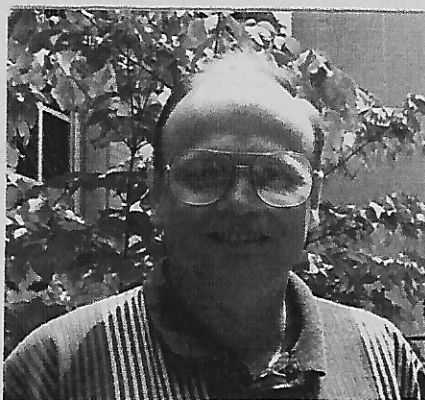
9:00 a.m.	Free Play	St. Louis B
9:30 a.m.	Quiet time	
10:00 a.m.	Snack	
11:00 a.m.	Game, Free Play, Story	
12:00 p.m.	Ballpark Afternoon Lunch	St. Louis B
	<u>Menu:</u>	
	Hot Dog Bun	
	Potato Chip	
	Cookies	
	Punch	
	<u>Thank to AAL providing.</u>	
12:30 p.m.	Free Play	St. Louis B
1:15 p.m.	Quiet time	St. Louis B
2:15 p.m.	Free Play, Game, Story	St. Louis B
3:00 p.m.	Snack	St. Louis B
5:00 p.m.	Parents Pick-Up Children	
6:30 p.m.	Pizza Party/Choir/TV	St. Louis B
9:00 p.m.	Close	



ILDA St. Louis 1997 Board of Directors



President
Larry Gorton



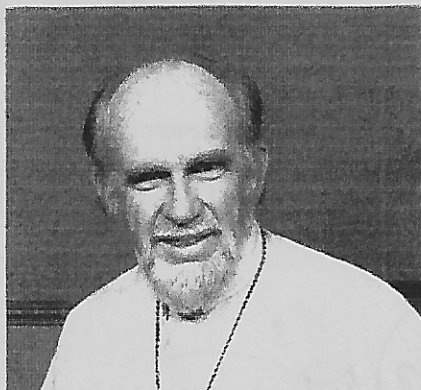
President-Elect
Dennis Konkel



Secretary
Alice Hagemeyer



Treasurer
Russel Healey



Pastoral Advisor
Rev. Don Leber



Board for Missions
**Dr. Rodney R.
Rynearson**

Regional Presidents

Eastern:
Donna Wright

Midwest:
Robert Dunnington

Central:
Irwin L. Bowlby

Great Lakes:
Robert Kane

Northwest:
Victor B. Lyon

Dixie:
Richard Norton

Pacific:
Charles J. Kotal



INTERNATIONAL LUTHERAN DEAF ASSOCIATION

"And looking up to heaven, He sighed, and saith unto him, Eph-pha-tha, that is, be opened." — St. Mark 7:34

BOARD OF DIRECTORS

EXECUTIVE COUNCIL:

PRESIDENT

Larry Gorton
S. 3807 Latawah
Spokane, WA 99203-2726
(509)624-5650 TTY
(509)328-2999 FAX

PRESIDENT-ELECT

Dennis Konkeld
18809 Chickadee Lane
Gaithersburg, MD 20879-1730
(301) 977-1221 TTY
E-Mail: konkeld@juno.com

SECRETARY

Alice Lougee Hagemeyer
2930 Craiglawn Rd.
Silver Spring, MD 20904-1816
(301) 572-5168 TTY
(301) 572-4134 FAX
E-mail: alhagemeyer@juno.com

TREASURER

Russel Healey
P.O. Box 223
Olive Branch, IL 62969-0223
(618) 776-5355
E-mail: R.Healey@juno.com

PASTORAL ADVISOR

Rev. Don Leber
6950 Center Ave.
Alta Loma, CA 91701
(909) 987-5484
E-mail: donalda.leber@deaftek.spring.com

BOARD OF MISSIONS

Dr. Rodney R. Rynearson
1333 So. Kirkwood Road
St. Louis, MO 63122
1-800-433-3954 TTY
(314) 965-9000 V

REGIONAL PRESIDENTS:

EASTERN

Donna Wright
151 A Diamond Street
Brooklyn, NY 11222-3007
(718) 383-4373 TTY

GREAT LAKES

Robert Kane
21831 Maydale Avenue
Euclid, OH 44123
(216) 731-0386

MIDWEST

Robert Dunnington
3621 Alsace
Sioux City, IA 51104-2014
(712) 277-3176 TTY/FAX

NORTHWEST

Victor B. Lyon
8843 35th Ave., SW
Seattle, WA 98126-3605
(206) 935-1983 TTY

PACIFIC

Charles J. Kotal
13100 Melanie Lane Sp. #26
Westminster, CA 92683-8205
(714) 898-8572 TTY & V

CENTRAL

Irwin L. Bowly
1507 No. Capital St.
Pekin, IL 61554-2078
(309) 346-0466 TTY

DIXIE

Richard Norton
5801 West Fitzhugh Road
Dripping Springs, TX 78620
(512) 894-0378 TTY

HISTORIAN

Mae Madding
1940 N. E. 57th Avenue
Portland, OR 97213
(503) 281-0319 TTY

THE DEAF LUTHERAN:

EDITOR

Lester Ahls
1004 Cherrywood Dr.
Cedar Falls, IA 50613-1614
(319) 268-1313 TTY

BUSINESS MANAGER

Elmer Francisco
10004 E. Mission
Spokane, WA 99206
(509) 922-3380 TTY

June 1997

Dear Brothers and Sisters;

As for the past two years we cling to the word of Jesus and the 1995 ILDA Convention theme, "Behold, I make all things new" - Rev. 21:5, we know He is the source we must seek to guide us and blessings will follow as "Jesus is the GateWay" - John 10:7 & John 14:6, our spiritual 1997 ILDA Convention theme.

Because we have been forgiven and are the children of God, it is important for us to remain faithful to our God's gift in Jesus Christ, to obey His command to worship, serve and glorify Him as our Lord, and with the Holy Spirit's guidance to grow in self control, patience for Him, kindness and love for all people.

God is calling us not only to cling to Christ's righteousness in faith, but also to share the Good News with many unchurched deaf people who do not receive His blessing.

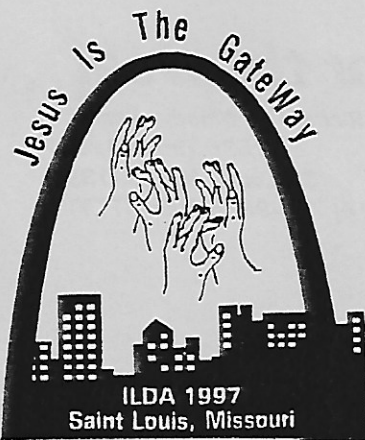
May the Holy Spirit working through His Word help us to give attention to His call as we gladly observe His blessings of our 14th Biennial ILDA Convention here in St. Louis, historically known to us as the "Gateway to the West."

In John 14:6, Jesus said that He, Himself is the *one and only* way to God, the *one and only* source of truth and life. In Truth, walk the Way of Life through the Gate, Jesus our Savior!

In His Service,

Larry Gorton, President
International Lutheran Deaf Association





1997 ILDA Convention
St. Louis, MO - July 3-6, 1997
Convention Headquarters: The ADAM'S MARK Hotel



Host: HOLY CROSS LUTHERAN CHURCH for the DEAF
101 North Beaumont Street • St. Louis, MO 63103-2227
Phone: (314) 533-6035 (Voice or TTY)
Rev. Richard A. Moody, Pastor

General Chairperson
Sharon Schwarz
404 Eureka Road
Eureka, MO 63025-5364
Phone: (314) 938-4507 (TTY)
Relay MO: 1-800-7352466 (V)
E-Mail: Schwarz @1 juno.com.

Co-Chairperson
Betty Jo Healey
P.O. Box 223
Olive Branch, IL 62469-0223
Ph: 1-618-776-5355 (TTY)

Sec.: Roxann Aubuchon
865 At. Brendan Lane
Florissant, MO 63031-6905
Ph: (314) 830-0404 (TTY/V)

Treas. Jeraldine Chapman
54 Lockhaven Drive
Granite City, IL 62040-5264
Ph: 1-618-797-6670 (TTY/V)

Registrations: Laura Boling
9739 Corregidor
St. Louis, MO 63134-4213
Ph: (314) 423-0849 (TTY/V)

Banquet: Elma Jean Griffin
3110 Clarence Place
St. Louis, MO 63115-2809
Ph: (314) 533-2731 (TTY/V)

Publicity: .

Jr. ILDA, Skits and Banners:
Brian Degner
6061 Carlsbad
St. Louis, MO 63216
Ph: (314) 752-5924 (TTY)

Hotel Reservations/Meeting Room
William (Bill) Schwarz
404 Eureka Road
Eureka, MO 63025-2155
Ph: (314) 938-4507 (TTY)
Relay MO: 1-800-7352466 (Voice)
E-Mail: Schwarz1@ juno.com.

Interpreter Coordinator:
William (Bill) Wrede
2821 Laclede Station Rd., B-9
St. Louis, MO
Ph: (314) 645-4928 (Voice)

Dear Friend in Christ:

Welcome the International Lutheran Deaf Association 14th Biannual Convention at Adam's Mark St. Louis. We are grateful to God to have you here in St. Louis, the Summer of 1997! In Truth, we walk the way of Life through the Gate, Jesus our Savior. As we view the Gateway Arch and the Mississippi River. We keep in mind the 1997 ILDA Convention Theme, "I am the Gateway" (John 10:7 - John 14:6).

We thank Fred S. Kummer, Chairman and CEO of the Adam's Mark Hotel, and all his employees here at the St. Louis Hotel for helping us have a successful ILDA Convention.

We also have a special thank you to Lutheran Charities Foundation for their grant of support for seed money for this convention.

I want to thank you for your faithful dedication and service to the people whom God has made with his special blessing.

Yours in Christ,

Sharon F. Schwarz
Chairperson

Holy Cross Lutheran Church for the Deaf

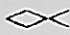
101 North Beaumont St.
St. Louis, MO 63103-2227
[314] 533-6035 (Voice/TTY)

Richard A. Moody, Pastor
1536 Tamm Ave.
St. Louis, MO 63139
[314] 781-9836 (Voice/TTY)

On behalf of Holy Cross Lutheran Church for the Deaf and members, we wish to welcome you to our wonderful city, to St. Louis Downtown, in the shadow of the Gateway Arch. Our Convention is within walking distance America's Center convention complex, Busch Stadium, Laclede's Landing, shopping, restaurants and riverboat.

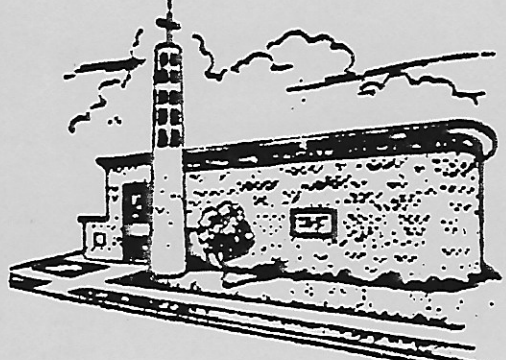
The 1997 ILDA convention committee have worked very hard over the past two years to coordinate all the details of this convention, and together we are all committed to making this ILDA 14th Biannual Convention the most memorable and successful one yet!

May God continue to bless International Lutheran Deaf Association for many more years.

God Bless You All. 

Harold Wm Schwarz

Harold Wm. Schwarz
President



"They brought to Jesus one deaf person" (Mark 7:32)

THE LUTHERAN CHURCH—MISSOURI SYNOD



International Center

1333 South Kirkwood Road
St. Louis, MO 63122-7295
(314) 965-9000 FAX: (314) 965-6108

July 3, 1997

Office of the President

The Reverend Dr. A.L. Barry
President of the Synod

Delegates and Visitors
International Lutheran Deaf Association Convention

Dear Brothers and Sisters in Christ:

On behalf of The Lutheran Church—Missouri Synod, I would like welcome you to Saint Louis for your 1997 ILDA Convention. May the Lord bless each of you as you come together to discuss and try to solve the problems facing our deaf members today. I know the Lord is with each of you as you work together during these three days of convention.

I hope you will take the time to visit the International Center while in Saint Louis. There are many lovely works of art, and the people will be happy to answer any of your questions. I am sure you will enjoy it.

God's continued blessings be with each of you during your convention, and may He bless you as you return to your homes later this week.

With kindest personal regards,

Dr. A. L. Barry
Jude 24-25

ALB:mcr





June 5, 1997

International Lutheran Deaf Association
Adam's Mark Hotel
St. Louis, MO 63203

Dear Friends in Christ:

Welcome to the 1997 ILDA International Convention in beautiful St. Louis. We hope that you will visit the Arch while you are here. When there is a clear day you can see a long way from the top.

The Host Committee has worked hard to prepare a wonderful convention for you. Just as St. Louis was the gateway to the west many years ago, Jesus is always the Gateway to life eternal in heaven.

If you have free time, try to visit Concordia Seminary, Concordia Publishing House, The Lutheran Layman's League Headquarters, and the International Center—headquarters of The Lutheran Church—Missouri Synod.

May Christ be with you during the convention and grant you a very blessed visit here in St. Louis.

Yours in Christ,

Rev. Rodney R. Rynearson, Ed.D.
Counselor for Deaf Mission



sg



THE MISSOURI DISTRICT
THE LUTHERAN CHURCH — MISSOURI SYNOD
3558 SOUTH JEFFERSON AVE., SAINT LOUIS, MO 63118-3980
(314) 268-1500 FAX: (314) 268-1499

May 23, 1997

TO: All delegates and guests attending the International Lutheran Deaf Association Convention July 3-6

Dear Brothers and Sisters in Christ:

In behalf of the Missouri District of The Lutheran Church--Missouri Synod allow me to welcome you to St. Louis.

Our prayers will ascend with yours before the throne of God, asking that your time together be one of great spiritual enrichment through the Gospel and of encouragement for future mission and ministry.

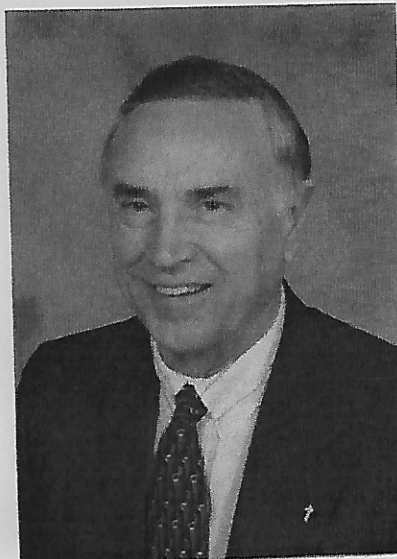
In His days upon the earth our Lord made the deaf to hear by a miracle of His mighty power and grace. Now He continues a similar miracle through you, His disciples, as you speak His Word through the "signs" by which hearts are opened to trust in our Savior, Jesus Christ for the forgiveness of sins, life and salvation.

May God bless your personal lives with His grace and allow you to share with others what you have received.

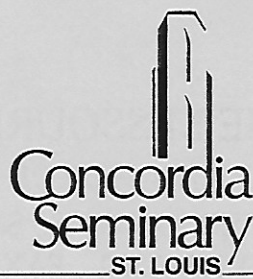
Yours in Christ,

Rev. Dr. James W. Kalthoff
President

JWK:djs



A Seminary of
The Lutheran Church - Missouri Synod
Founded 1839



801 DeMun Avenue
St. Louis, MO 63105-3199
Phone: (314) 505-7010 FAX: (314) 505-7002

OFFICE OF THE PRESIDENT

July 3, 1997

Dear ILDA Members:


Greetings from the campus of Concordia Seminary here in St. Louis.

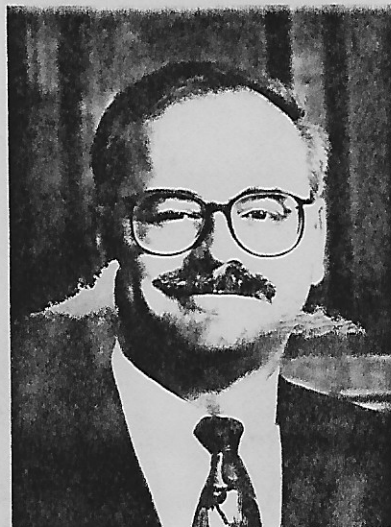
I am pleased to extend a most hearty welcome to each of you on behalf of the Faculty, Staff, and students of Concordia Seminary. It is a delight to have you in our community for your 1997 convention. Since it was founded in 1839, Concordia Seminary has prepared thousands of pastors for the ministry of Word and Sacraments in the Lutheran Church--Missouri Synod. A significant number of these servants have been involved in special ministry to the deaf or have, themselves, been hearing impaired. This dimension of seminary education at Concordia remains a prominent one to this day.

The Seminary is located at 801 DeMun Avenue in Clayton and is readily accessible from your downtown convention headquarters. We would be delighted to have you visit us.

May your convention be a blessed and uplifting one!

Cordially,


John F. Johnson
President



United States Senate

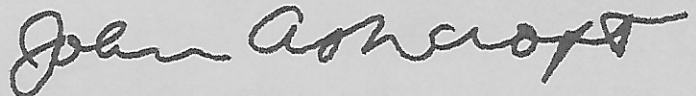
WASHINGTON, DC 20510-2504

Dear Friends:

It is with great pleasure that I welcome all in attendance to Saint Louis for the 1997 International Lutheran Deaf Association Convention, from July 3 through 6. I applaud the efforts of the Holy Cross Lutheran Church for the Deaf in hosting this event.

I am pleased that the International Lutheran Deaf Association has chosen Saint Louis as the site of its convention, and I send my best wishes to all those participating in the event. Enjoy the convention!

Sincerely,



John Ashcroft
United States Senate





OFFICE OF THE GOVERNOR
STATE OF MISSOURI
JEFFERSON CITY
65101

MEL CARNAHAN
GOVERNOR

STATE CAPITOL
ROOM 216
(573) 751-3222

July 3, 1997

GREETINGS:

On behalf of the State of Missouri, I extend best wishes to those attending and participating in the International Lutheran Deaf Association's annual convention.

The International Lutheran Deaf Association provides many valuable services to the hearing impaired across our state and nation. This convention is a celebration of progress and an opportunity to share in the development of new plans to improve conditions for the hearing impaired as we near the beginning of a new millennium.

I hope you have a productive convention and an enjoyable stay in St. Louis.

Very truly yours,

Mel Carnahan

MC:tsr



MISSOURI COMMISSION FOR THE DEAF

915 Leslie Blvd. Suite E
Jefferson City, Missouri 65101
(800) 796-6499 TTY/Voice
(573) 526-5205 TTY/Voice
(573) 526-5209 FAX

Gerald L. Covell
Executive Director

Mel Carnahan
Governor

May 19, 1997

COMMISSIONERS

KEVIN BABIN, CHAIR
Interpreter for the Deaf

Missouri School for the Deaf

HELEN BAYER
Local School Administration

JILL CORR
Audiology

GEORGETTA GRAYBILL
Missouri Association of the Deaf

GREGORY HELLER
Deaf Community

ANTONINA WILSON
Parent of a Deaf Child

MARJORIE YATES
Deaf Community

VACANT
Business Community

Dear 1997 ILDA Conventioneers:

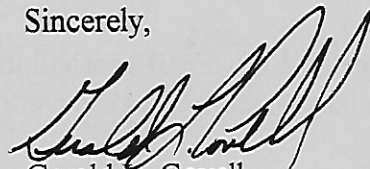
Welcome to the State of Missouri, the Show-Me-State!

I am glad that you chose St. Louis Missouri as your 1997 convention site as the city is famous for its beautiful Arch which is known as a gateway to the west. This convention will provide a religious gateway to you and each of the deaf individuals.

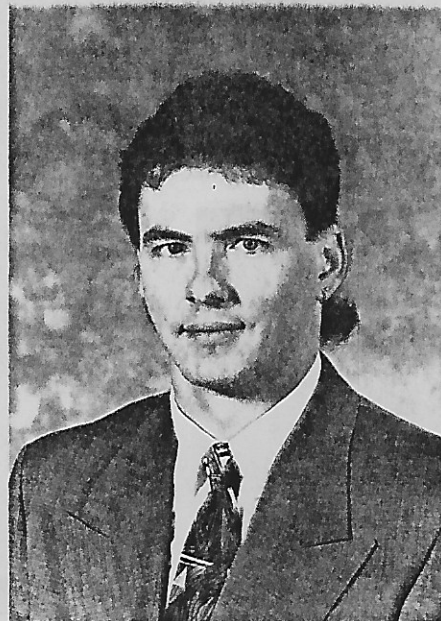
I hope you will take the time to visit the Arch during the 4th of July weekend which is known as the Fair St. Louis. A huge independence celebration with the longest and awesome fireworks display.

I wish success of the International Lutheran Deaf Association Convention which in turn will benefit deaf individuals worldwide. Let this Show-Me-State make your visit, convention, and 4th of July weekend memorable.

Sincerely,



Gerald L. Covell
Executive Director





**OFFICE OF THE MAYOR
CITY OF ST. LOUIS
MISSOURI**

**CLARENCE HARMON
MAYOR**

**CITY HALL - ROOM 200
1200 MARKET STREET
SAINT LOUIS, MISSOURI 63103-2877
(314) 622-3201
FAX: (314) 622-4061**

May 28, 1997

Holy Cross Lutheran Church for the Deaf
101 North Beaumont Street
St. Louis, Missouri 63103

Greetings:

As Mayor of the City of St. Louis, it is with pleasure that I welcome you to the International Lutheran Deaf Association Convention to be held July 3 through July 6, 1997 at the Adams Mark Hotel, in St. Louis.

During your visit with us, I encourage you to take time to explore some of St. Louis' many treasures. No visit to St. Louis is complete without a stop at our famed Gateway Arch. The St. Louis Science Center, Zoo and Missouri Botanical Garden are among the finest in the country.

Enjoy the dining and entertainment options downtown at Laclede's Landing or in one of our charming neighborhoods such as Soulard, the Central West End or the Hill. Consider trying your luck at one of our Vegas-style casinos. See what's in store at one of our intriguing shopping areas like St. Louis Union Station or Cherokee Street Antique Row.

If you are a sports fan, you might want to catch a Cardinals baseball game at Busch Stadium. No matter what your interests, St. Louis has something for everyone, and our Midwestern hospitality can't be beat.

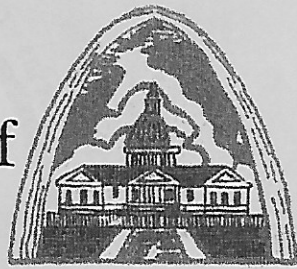
It is my sincere hope that you enjoy your visit. Best wishes for a successful convention!



Sincerely,

Clarence Harmon
MAYOR

Office of the Mayor



City of Saint Louis

Proclamation



WHEREAS

THERE ARE OVER 20 MILLION DEAF AND HARD-OF-HEARING PEOPLE IN THE UNITED STATES OF AMERICA; AND

WHEREAS, THE CITY OF ST. LOUIS DEMONSTRATES THE IMPORTANCE OF PROVIDING FULL ACCESS FOR ALL THE DIVERSE CITIZENS THAT GOD HAS PLACED WITHIN ITS CITY LIMITS BY PROVIDING INTERPRETERS AT CITY FUNCTIONS INCLUDING FAIR SAINT LOUIS; AND

WHEREAS, THERE ARE MANY FINE DEAF ORGANIZATIONS ALL OVER THE COUNTRY AND HERE IN SAINT LOUIS THAT HAVE AS THEIR GOAL A GREATER AWARENESS OF THE NEED FOR CLEAR COMMUNICATION AMONG DEAF AND HEARING ALIKE; AND

Attest

WHEREAS, ONE OF THOSE ORGANIZATIONS, THE INTERNATIONAL LUTHERAN DEAF ASSOCIATION, HAS CHOSEN SAINT LOUIS, THE GATEWAY TO THE WEST, AS THE SITE OF ITS 14TH BIENNIAL CONVENTION.

NOW, THEREFORE, I, CLARENCE HARMON, MAYOR OF THE CITY OF SAINT LOUIS, DO HEREBY PROCLAIM JULY 3-6, 1997 AS:

**"INTERNATIONAL LUTHERAN DEAF ASSOCIATION DAYS"
IN THE CITY OF SAINT LOUIS**

IN WITNESS WHEREOF, I HAVE HEREUNTO SET MY HAND AND CAUSED TO BE AFFIXED THE SEAL OF THE CITY OF SAINT LOUIS, THIS 3RD DAY OF JULY, A.D. 1997.



Clarence Harmon

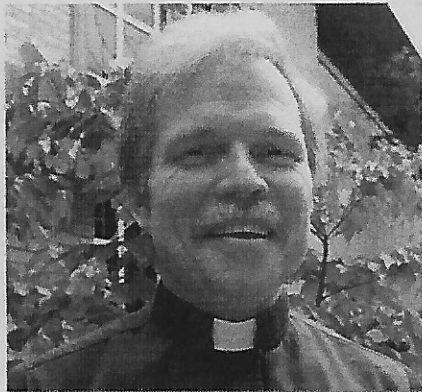
Mayor of the City of Saint Louis

Rita M. Kruff
Register



Chairperson
Sharon Schwarz

The Convention



Pastoral Advisor
Pastor Richard Moody



Secretary
Roxann Aubuchon



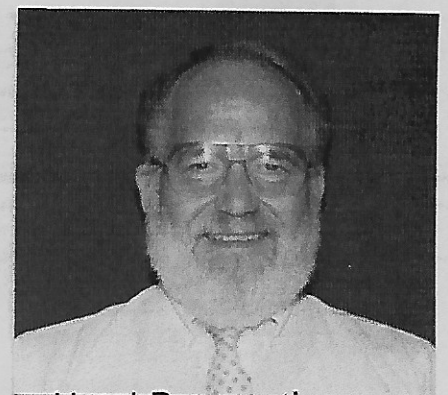
Treasurer
Jearaldine Chapman



Child Care
Karen Schellin



Interpreter Coordinator
William (Bill) Wrede



Hotel Reservations
Harold (Bill) Schwarz

Volunteers and



Child Care
**Lois
Moody**



Child Care
**Pam
Boling**



Registrations
**Sharon
Dilks**



Registrations
**Brenda
McClintock**



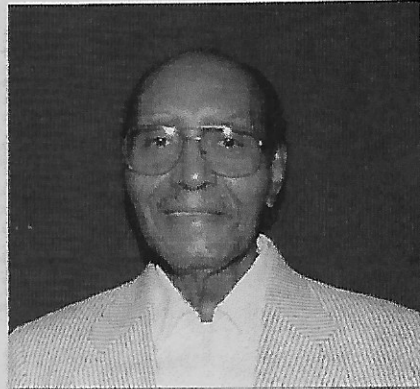
1997 Committee



Co-Chairperson
Betty Jo Healey



Registrations
Laura Boling



Publicity
Archie D. Marshall



Banquet/Banner
Elma Jean Griffin



Junior ILDA/Study
Dan Wallis



Junior ILDA/Six Flags
Brian Degner

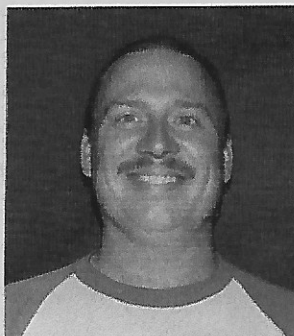


Junior ILDA/Activities
Angie Wallis

Other Helpers



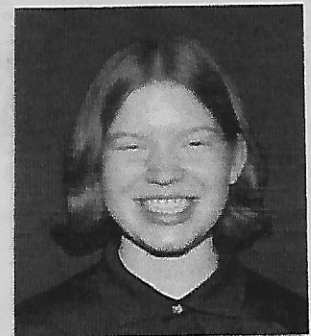
Registrations
Brenda Hente



Video
Gene Schellin



Video
Jennifer Moody



Video
Rebekah Moody

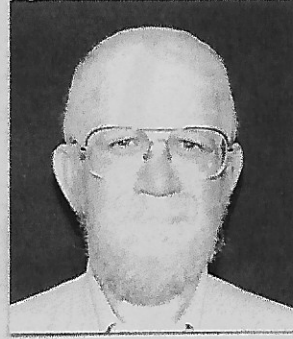
and More Volunteers and Other Helpers



Video
**Kristina
Moody**



Video
**Christopher
McCartney**



Assistant
**Jackie
Chapman**



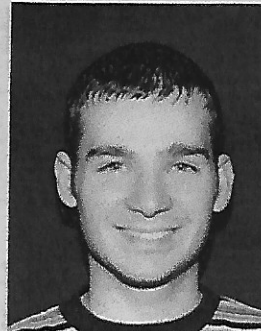
Assistant
**Bob
Boling**



Lighting
**David
Christian**



Junior ILDA
**Mary
Stewart**



Junior ILDA
**Matt
Lieberman**

Live Captioning
Kimberly A Pfleinger

Interpreter:
**Charlene Allen
Bridget Bange
Paula Barlow
Susan Hanick
Paula Willig
Bill Wrede**

Special Volunteers:
(not pictured)
**Diane Adolf
Mary E. Davis
Phyllis Gruchalla
Rachel Heisinger
Richard Scales
Yvonne Scales
Maxine Smith
Sue Smith
Lois Yemm**

Special Thanks:
Sharon Dilks
for donating beads
for kid's project

**Holy Cross Deaf
Members for all the
help and donations
of baskets for
our Banquet
Center Pieces!**

Alberta Lanig
for donating the
Needlework
Fireworks

**Russel and Betty Jo
Healey**
for donating the
frames for Awards.

**Congratulations
and God's Blessings
on your
14th Biennial Convention**

*Rockford Lutheran Church
of the Deaf
Rockford, Illinois*

**Thank You
City of
Arnold,
Missouri,
for the
sand bags
to weight
our
lights!**

**Thanks
for
Providing
the Pipe
Stands
for our
Lights!**

DALE HARDWARE, INC.

1115 S. Big Bend Blvd.
Richmond Heights, MO 63117
Phone: (314) 781-5496
FAX: (314) 781-5539

-PERSONAL SERVICE SINCE 1953-

Richard Moody
Gene Schellin
Karen Schellin
Yvonne Scales



Dan Wallis
David Christian
Angie Wallis
Renée Standifer

Convention Choir



Tracy Tao

Thank you for the T-Shirt Design!



Banquet Entertainment
Bruce Sculley and Debbie Pike



Banquet Mime Entertainment
Bill Carwille

Holy Cross Lutheran Church for the Deaf's history began in 1894. Since that time we have had 12 pastors, had over 300 baptisms, and confirmed over 275 members. Our previous book contained some of our history in brief. This book presents our pastors and part of their histories.



PASTOR
AUGUSTUS H. REINKE
 was the first Pastor to serve St. Louis. While serving the deaf in Chicago he would make frequent trips to St. Louis. About the first service, the Deaf Lutheran (March 1919) said: "About 30 deaf attended and asked him to come again."

Pastor Reinke was born in Veisen, Hanover, Germany on Sept. 29, 1841. He started work among the deaf because of requests from a graduate of the Detroit School for the Deaf. In the first years of work he traveled all over beginning the work among the deaf. Pastor Reinke died on Nov. 18, 1899.

AUGUST
HERMAN HALLERBERG
 was born on Nov. 21, 1877 in Quincy, IL. After graduation in 1900 from St. Louis, he served the deaf mission here as our first resident missionary. Then in 1904 he left to Jacksonville, IL. He served six hearing ministries before his death on October 4, 1927.



PASTOR CHARLES SCHUBKEGEL, after serving over 20 years at Blue Hill, NE, became hard of hearing. He came back to St. Louis and studied sign language under N. P. Uhlig, a seminary student. Pastor N. F. Jensen, Kansas City, occasionally preached in St. Louis while Pastor Schubkel finished his studies. He was called to serve our mission here and was installed on August 30, 1908. At that time there were only two Lutheran members, both of

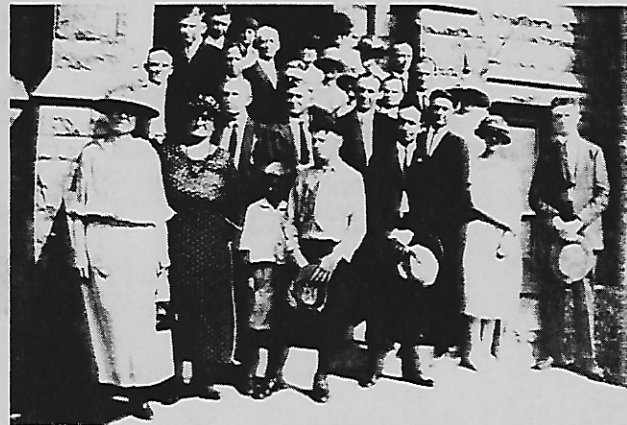
them being graduates of the Lutheran School for the Deaf, Detroit.

By 1909, with joint services held at Emmaus Lutheran, five deaf women and three deaf men were confirmed. Deaf services were held twice a month.



Sem. L. Jagels was appointed to assist Pastor Schubkegel because cataracts were bothering him. He had eye surgery in Nov. 1909. Sem. A. C. Dahms conducted reading services at this time.

By 1916 the membership had expanded to 27 confirmed members.



(Members, July 1923, at Grace Lutheran)

Though he was often ill, he served preaching stations in St. Charles, Jacksonville, IL, Evansville, Indianapolis, and Columbus, IN, and Louisville, KY. He helped 32 communicant members adopt a Constitution and Bylaws organizing as Holy Cross Evangelical Lutheran Deaf Congregation on January 30, 1930.

After 3 surgeries in 1931, Pastor Schubkegel retired in 1934 at the age of 73 but he served the vacancy until 1935. In 1933 he celebrated his 50th anniversary of service to his Lord, more than 25 years given to our service alone!

Pastor Schubkegel was born in Mascoutah, IL, on March 24, 1860. After serving here, he continued living in St. Louis and worshipping with his

church. On March 24, 1940, his 80th birthday, he was honored by hearing and deaf friends. He died on March 6, 1944, after being confined to bed for a month. He lacked 18 days of being 84 years young.

PASTOR FRANK A HISCHKE accepted our call from Spokane, WA, where he was serving the deaf. He was installed Jan. 27, 1935 to serve our 40 members.



His first year saw the beginning of many groups and growth at Holy Cross. He started work at St. Philip's Lutheran among the black deaf of St. Louis. Feb. 20th the Ladies Aid was organized with 9 women. On March 13th the Men's Club began with 7 men. The Young People's Society was organized on May 10th. The black deaf from St. Philip's, 14 in number, invited the white deaf to worship with them on May 12th.

In 1936 the white deaf moved from Grace Lutheran to St. Stephen's. Monthly services were held here, at St. Philip's, and at the many preaching stations served by Pastor Hischke.

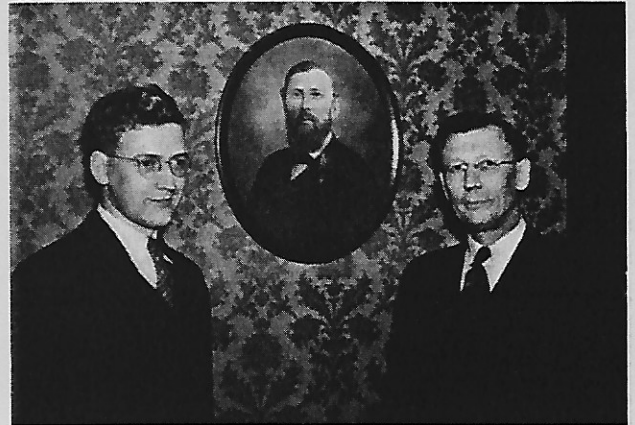
He was born in Suring, WI, November 24, 1903. It was on Feb. 10th, 1938, while at the preaching station in Little Rock, AR, that he died of a heart attack at 35 years old. Six members of Holy Cross served as Pallbearers.

NATHANAEL PAUL UHLIG was installed as pastor on August 21, 1938. On April 16, 1939, the new chapel and parsonage was dedicated at 4517 West Pine. At this time there were around 100 members. A year later, Oct. 23, 1940, our name was changed to Holy Cross Lutheran Church for the Deaf. He conducted classes for the deaf at Gallaudet and at C.I.D. There was also an oral service at 9 AM twice a month followed



by the signed service at 10 AM.

N. P. Uhlig was born in Detroit, MI, on Feb. 20, 1885. When he left Holy Cross in September 1945, he went to Jacksonville, IL. He continued serving the deaf until his death on June 27, 1963.



Pictured here - 3 generations of workers among the deaf: Walter Uhlig (left) who served with Floyd Possehl as seminary students from Feb. 13, 1938, until his father, N. P. Uhlig (right) was installed as our pastor. On the wall is a picture of Herman Daniel Uhlig, Superintendent at the Lutheran School for the Deaf, Detroit.

PASTOR FRANCIS G. GYLE began his service as a vicar on June 25, 1946. He was commissioned by the Board for Missions as missionary-at-large and supervised by Rev. J. S. Salvner. He was ordained on Sept. 22, 1946.



After the sale of our West Pine Worship home (for \$18,000), we again worshipped with Grace Lutheran Church at Nolte Memorial Chapel while they finished their new "house of worship".

In June of 1948 we became part of the English District of the LCMS.

Under Pastor Gyle's leadership, the black and white deaf began holding occasional joint services and socials in 1950. It would be almost 6 years later before the black and white deaf would merge into one Church.

In 1951, Archie Marshall designed the then front page of the Deaf Lutheran.

Pastor Gyle left to serve the deaf in Miami, FL in 1952. At 68 years old (born June 11, 1917, in San Francisco), he served the deaf in Canada. He is now retired in Florida.



PASTOR WILLIAM F. REINKING was born in South Bend, IN, on Feb. 22, 1928. Before his death on Oct. 15, 1980, his service to his Lord and the deaf took him all over, including Hong Kong in 1964. His first parish was Holy

Cross Deaf. He was ordained June 8, 1952, and continued until he accepted a call to serve as Executive Secretary of Deaf Missions in 1958.

During his first year, Oct. 26th was the beginning of our Family Nights. Our Annual New Year's Eve Family Night also began. On Dec. 28th Pastor Reinking became an assistant pastor at St. Philip's with Norman Ingram and Archie Marshall serving as deacons (in 1953 Muriel Weaver replaced Norman because he moved to Michigan).

On January 1, 1956, the black and white deaf of St. Louis shake hands and merge as one congregation. This deaf congregation was the first to integrate in the state of Missouri. A year later, the congregation purchased their building from Unity Lutheran (Oleatha and Hereford) for \$20,000. Dedication was on February 17, 1957.



PASTOR GEORGE RICHARD KRAUS, our pastor from 1959 to 1962, was installed on

May 3rd. He came from Calvary Deaf, St. Paul, MN. We were his 3rd parish after he began his ministry at St. Matthew Deaf, NY. In 1962, he accepted a call to St. Peter's in New York, a hearing church. He was born in Plainfield, NJ, on Nov. 26, 1924. In 1983, he accepted a call to serve Concordia Seminary, Fort Wayne, and serve there until his death on April 24, 1989.



PASTOR FLOYD F. POSSEHL lived in retirement in Duluth, MN, until his death. He served the deaf most of his life. He was installed on Feb. 11, 1962. On Aug. 22, 1965, we broke ground for our Chapel on the Mall (See picture on first page). However, the City's plan changed in the in-

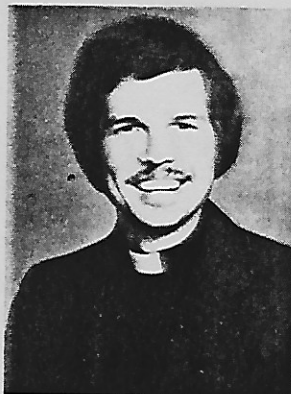
terim and they would not complete the Mall out to our location. By Nov. 21, 1965, the cornerstone was laid. On October 23, 1966, our new chapel was dedicated.



PASTOR MARTIN HEWITT began his work with us in the 1970s. He followed the difficult time of the resignation of Pastor Possehl because of health problems. The deaf community seemed to become very well organized with the beginning of many groups. Holy Cross Deaf

also became very well organized under Pastor Hewitt's leadership. The deaf members became very active in their community.

Pastor Hewitt was born in Detroit, Michigan on August 1, 1937. He was installed as our Pastor on May 10, 1970. In June 1978 he accepted a call to serve the deaf in Spokane, WA, where he still serves today.



Beginning in September of that year, PASTOR RICHARD MOODY started serving us as a 4th year Seminary student. The following year, on June 13, 1979, we installed him as our Pastor. Commitment to our Lord's work has increased steadily ever

since that day. During the first 3 years, offerings doubled and today this congregation receives no subsidy from the Missouri District. Additionally, beginning in 1996, the Voter's decided that 10% of the Budget should be given to outside missions, 5% to ILDA and CRC and 5% to Synod and local Lutheran Ministries.

The music program at Holy Cross continues to be an important aspect of the ministry. The choir group has toured many, many places during the years. Donations purchased two sets of choir robes and shirts used for informal performances.

Our AAL Branch was reactivated in 1979 and has continued as a Gold Star Branch every year since that time. During 1979, it helped raise over \$25,000 to pay medical bills which Pastor Radtke's Family had following an airplane crash in 1977.



PASTOR FRED RADTKE was ordained and installed in June of 1981 as our assistant pastor. His main work was with the Synod's Board of Parish Services in writing materials for the mentally retarded. Pastor Radtke is now retired in Italy.

A big event in our recent history happened when we decided to begin a Lutheran School for the Deaf in St. Louis. Actually, we took over a hearing Montessori School, Child of Nazareth, which had been operating on the Seminary campus for 9 years. With the help of a grant from The Mill Neck Foundation, and with the hard and continued work of our Administrator, RUTH HUMMEL, we began our deaf program in the fall of 1985. Our school was located at St. James Lutheran in University City, Missouri. Our methodology was total communication using the



concrete Montessori curriculum materials while integrating the deaf and hearing together. In a few years, the deaf and hearing students were interacting together as one community and everyone, including staff members, were learn-

ing to sign. Everyone was treated as an important individual in God's sight! In June 1996, we had to close our program because we could get no more deaf children. We thank the ILDA for their many years of support given our program allowing deaf children to learn about Jesus.

A 1992 grant from the Lutheran Charities Foundation began a cooperative Video ministry of the deaf LCMS congregations. Many Pastors and Deaf Churches are working together to produce videos in the language of the deaf. Since 1992, many individuals, churches, AAL and the LWML have helped to continue this Churchwide effort to bring Christian support materials to the deaf in their language. By the beginning of 1997, every 1½ months, that ministry was sending out over 1000 video cassettes. These 2 hour videos contain daily short Bible Study devotionals, Bible Study sheets and answers. Many deaf people who have developed new Bible Study habits and have faithfully used these tapes have indicated that they are now learning the Bible and feel more comfortable in sharing their faith in Jesus with their friends. Jesus is able to reach many deaf people who so often were not served including 4 prisoners in a Maryland prison. We truly pray God blesses everyone using and helping to produce these much needed materials! Every Sunday, the worship service of Holy Cross Deaf also serves over 20 additional families located all over the US.

Pastor Moody has been developing a true lectionary of Church Sunday Bible readings which we pray is published and distributed during 1997-98. The goal is to make God's Word become more alive in the language of the Deaf than in signed English. An anonymous grant will distribute it at no cost to the Deaf Churches.

We pray God continues to bless many, many more deaf people as He gives us the strength to continue spreading His word. We also pray that the 1997 ILDA Convention is a great success and all the glory is given to our wonderful God and Savior, Jesus Christ!

"Jesus is the Light of the World"

St. Matthew Lutheran Church of the Deaf

41 - 01 75th Street
Elmhurst, N.Y. 11373
718-478-2108 (TTY)

1st & 3rd Sundays

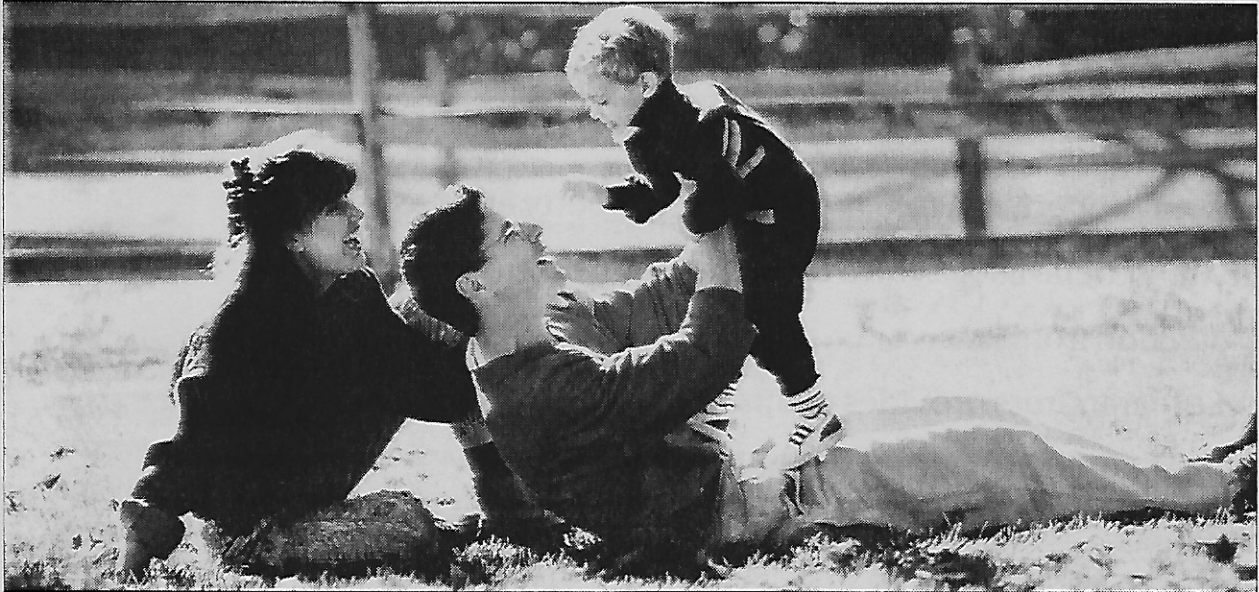
President John Woods
718-898-4438 (TTY)

*Thanks to God's Blessings on
St. Matthew for 86 years.*



AID ASSOCIATION FOR LUTHERANS

AAL Is A Powerful Resource That 1.6 Million Lutherans Take Advantage Of Every Day.



You can, too. Just send for our FREE brochure.

Every day, more than a million Lutherans benefit by their membership in AAL.

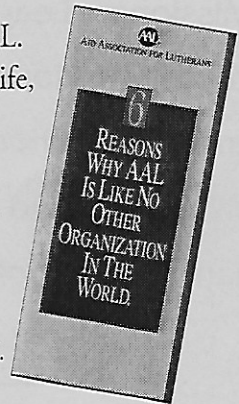
Every day, families' finances are strengthened with the help of AAL through life, disability[†], long-term care[†] and Medicare Supplement[†] insurance, annuities, mutual funds*, and credit union** services.

As your district representative, I'd like to show you what AAL has to offer. Send for our FREE brochure, "Six Reasons Why AAL Is Like No Other Organization In The World," or feel free to give me a call.

[†]Where available.

*Securities offered through AAL Capital Management Corporation, 222 W. College Ave., Appleton, WI 54919-0007.

**The AAL Member Credit Union is an AAL Affiliate.



(314) 909-1984

**Gary D. Johnson, LUTCF, FIC
and Associates**

Please send me your FREE brochure, "Six Reasons Why AAL Is Like No Other Organization in the World." Mail this request to:

AAL - 4321 N. Ballard Rd., Appleton, WI 54919

Yes, I am an AAL member. No, I am not an AAL member.

Name _____

Address _____

City _____ State _____ Zip _____

Phone _____ Date of Birth _____

AAL is a Fraternal Benefit Society. ©1994 Aid Association for Lutherans, Appleton, WI 54919-0001

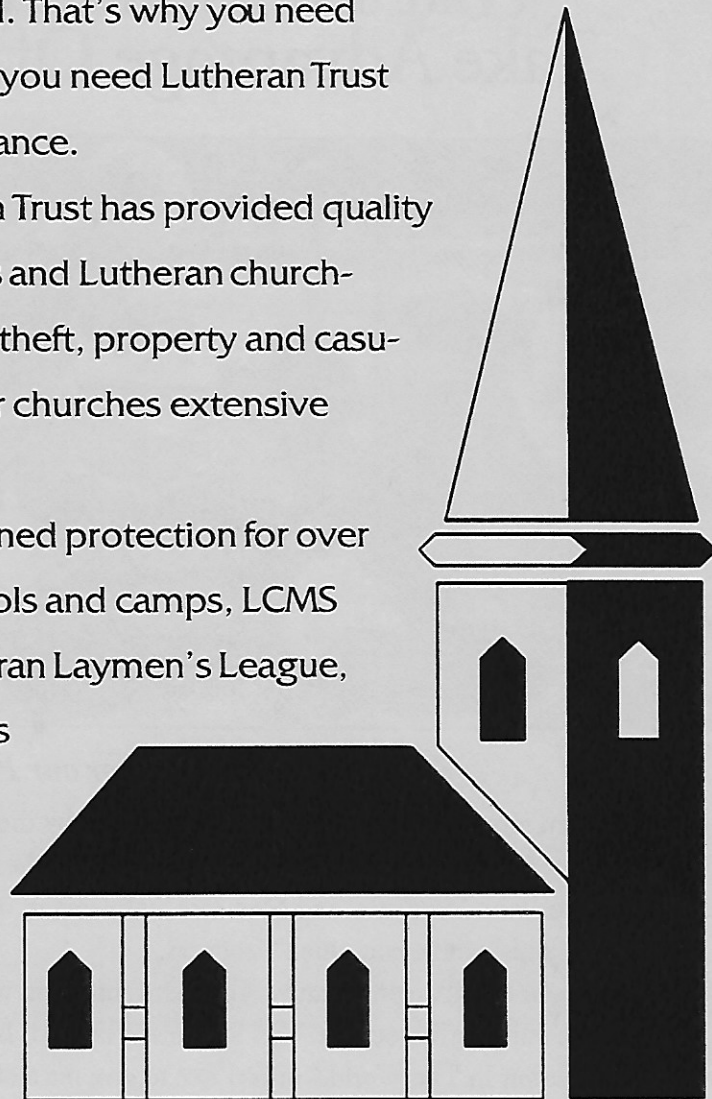
11750A

Is your church protected?

Losses are always unplanned. That's why you need planned protection. That's why you need Lutheran Trust and Preferred Risk Mutual Insurance.


For over eight years Lutheran Trust has provided quality insurance for Lutheran churches and Lutheran church-related properties. From fire to theft, property and casualty to general liability, we offer churches extensive protection from loss.

Lutheran Trust provides planned protection for over 1,400 Lutheran churches, schools and camps, LCMS Seminaries, International Lutheran Laymen's League, International Lutheran Women's Missionary League, Concordia Publishing House, the Lutheran High School Association of St. Louis and other Christian organizations.



We insure the church, the steeple, the pastor and the people®

*For more information, call
1-800-200-7257*

Lutheran Trust is a member of the
 LUTHERAN BROTHERHOOD
family of financial services.

Christian Fellowship



*Silent Lutheran Church - L.C.M.S.
1929 Huxley St.
Madison, WI 53704*

Pastor: Rev. Jessie A. Forrest, M.A.L.

Christian Bible Study



Winter Schedule
Bible Study & SS: 9:00AM
Worship: 10:00AM

Summer Schedule
Worship: 8:30AM
Bible Study & SS: 9:30AM

Christian Worship



Christian Drama



"A Church where You are Loved"

The Fiftieth Year Shall Be a Jubilee For You



On the great occasion of Lutheran Friends of the Deaf's 50-year anniversary, it is time to give thanks to God for the support of many people who have built three organizations for the educational, spiritual and vocational benefit of Deaf people.

When a group of Lutheran Church—Missouri Synod pastors and laypeople incorporated as Lutheran Friends of the Deaf (LFD) in 1947 in New York City, their initial goal was to found a residential elementary school for Deaf children.

But, they envisioned other efforts as well. Under the banner of sharing the love of Christ with Deaf people, LFD has provided education to Deaf students of all ages, initiated and supported Deaf mission work in the US

and the world, and aided Deaf people in their quest to become independent in employment and adult life.

Through God's Blessings and generous supporters, those goals continue to be achieved today through the Mill Neck Family of Organizations:

*Mill Neck Manor School
for Deaf Children, est. 1951*

Mill Neck Foundation, est. 1979

*Mill Neck Services for
Deaf Adults, est. 1986*

Board of Directors 1997

Rev. Dr. Thomas P. Armour
Mr. Rudolph H. Auslander
Mr. William A. Bahr
Mr. Philip Bauer, Jr.
Rev. Dr. David H. Benke
Mr. John G. Eberlein, Jr.
Founding Member
Dr. Wilber R. Griswold
Mr. Michael F. Killian
Rev. Herbert W. Robe
Rev. Howard J. Schoenfeldt
Founding Member
Rev. Dr. William G. Thompson

Executive Director
Mark R. Prowatzke, Ph.D.

Lutheran Friends of the Deaf

*Rejoicing in 50 Years of Service to
God's People Who are Deaf*

For more information, write or call:
The Mill Neck Family of Organizations
Frost Mill Road, PO Box 100, Mill Neck, NY 11765
1-800-264-0662



We're not just

PURPLE...

Lutheran Women in Mission
... the place for you



Lutheran Women's Missionary League
e-mail: ilwml.org ♦ web site: <http://www.ilwml.org>
Phone: 1-800-252-5965 ♦ Fax: 314-268-1532
3558 South Jefferson Avenue, Saint Louis, Missouri 63118



When you invest in
Church Extension, you make
possible a church,
a school,
a baptism,
a first communion,
the Gospel proclaimed.

Come, join the ministry!

Lutheran Church Extension Fund

1333 S. Kirkwood Road
St. Louis, MO 63122-7295
1-800-843-5233
www.lcef.org

TTY available.

This does not constitute an offer to sell or a request to buy. The offer is made solely by LCEF's Offering Circular.

**Some people see
a crowd.**

**We see souls who need
to know their Savior.**

Let's see it together.

Call operator #7.



Foundation

1-800-325-7912

<http://www.lfnd.org>

PRINCE OF PEACE
LUTHERAN CHURCH FOR THE DEAF
MINNEAPOLIS, MN



*Serving the Deaf & Hard-of-
Hearing in Faribault,
Minneapolis, St. Cloud, St.
Paul, Waconia and the rest of
Southern Minnesota
since 1901.*

GREETES EVERYONE
AT 1997 ILDA
IN ST. LOUIS, MO

WELCOMES ALL TO 1998
MIDWEST ILDA IN
MINNEAPOLIS



WITH LORD'S BLESSING, OUR CLUB
WISHES A GREAT SUCCESS TO THE
HOST OF THE 14TH BIENNIAL
ILDA CONVENTION!



**Ohio Silent
Wanderers Club**

is a deaf and hearing-impaired, family orientate camping group, founded in 1972 with five members and now has grown to 49 members. OSWC meets once a month between May and October at different campgrounds in Ohio.

**PATRONS
\$100 AND MORE**

**In Memory
of
Henry Maki**

This Patron was
omitted from the
Program Book
at the
Chicago Convention
June 29 - July 2, 1995

**Irwin
Bowlby
Peoria, Illinois**

**William
Nordstrom
Hackensack,
New Jersey**

TTY/TDD STORE

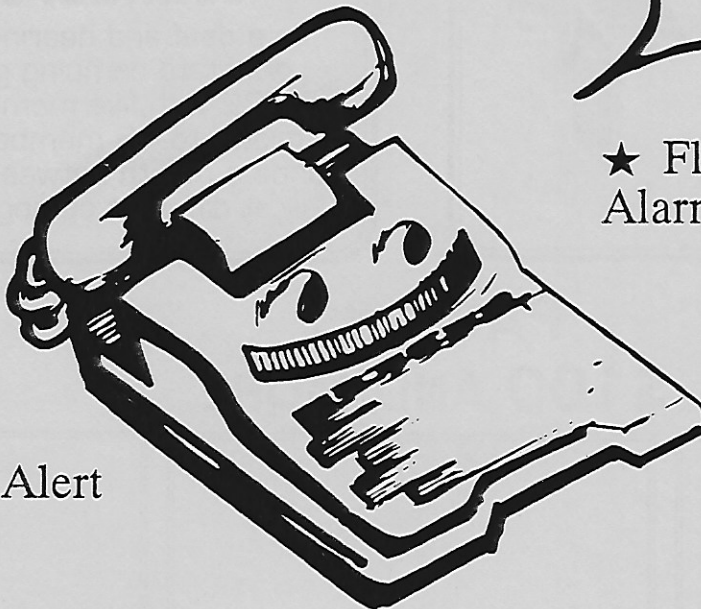
Offering
MAJOR BRANDS
at prices you can afford!

★ Equipment for the
Hard of Hearing



★ TDDs

★ Flashing
Alarm Clocks



★ Flashing Alert
Systems

★ Close
Captioning
Decoders

★★★ Accessories ★★★ Supplies

Let us help you find equipment to fit your needs!

Use your
Visa - MasterCard
Discover Card or Layaway

TTY/TDD Store
1250 Womack Ave.
East Point, GA 30344

Call Today!
800-578-7189
404-755-0256
Voice & TDD
404-752-7863 Fax

PATRONS
\$100 AND MORE (continued)

Many thanks to Holy Cross Lutheran Church for the Deaf, St. Louis, Mo., for their wonderful ideas of fund raising with Ornaments, Candles and Magnets. Hope they continue for the next ILDA, 1999. Congratulation for doing great job!

**St. Matthew
Lutheran
Deaf**

41-02 75th Street,
Elmhurst, NY

**Calvary
Lutheran
Church
for the Deaf**

Des Moines,
Iowa

**Trinity
Lutheran
Church
for the Deaf**

Pittsburgh,
Pennsylvania

PATRONS
\$25 AND MORE

**GOD BLESS
The International
Lutheran Deaf
Association
in fellowship and service**

“Look Up with Faith”

Faith Lutheran Church
of the Deaf
2733 Northwest Blvd.
Spokane, WA 99205



**Peace Lutheran
Church
For the Deaf**

**Indianapolis,
Indiana**

Jesus the Gate.....

Many thanks to all our members and convention participants who supported Holy Cross Lutheran Church for the Deaf in their plans in successfully hosting our ILDA Convention here in St. Louis!

“We should think about each other and see how we can help each other to show love and do good things.”
Hebrews 10:24

Larry Gorton, ILDA President

.....Jesus is the Way

PATRONS

\$25 AND MORE (Continued)

Greetings in Christ! —
May our Lord
bless our ILDA
Convention
richly that we all
find joy and enjoyment
in our fellowship
with one another.

Love in Christ,
Tim and Cathy Johnston
Royal Oak, Michigan

**ST. MARK
LUTHERAN CHURCH
FOR THE DEAF
NEW YORK, N.Y.**

May the
Gateway
from heaven
shine on
ILDA Convention
with blessings
from God.

Christ says:
"**You** are the light of the world
...put the light on a stand and it
gives light to everyone in the
house." (Matthew 5:14)

Romans 1:16 continues: "I am
not ashamed of the gospel,
because it is the power of God
for the salvation of **everyone**
who believes."

and Christ commissions us by
exhorting us to "**Go** into all the
world and **preach (share)** the
good news (gospel) to **all**
people" (Mark 16:15).

May the Holy Spirit spread His
blessings on each of you and
your works as you **carry the**
light from this convention.

David and Jill Christian
St. Louis, Missouri

**Rockford Lutheran
Church of the
Deaf**

Rockford,
Illinois

**Rex
E.
Henderson**

Lansing,
Michigan

**Ardena
G.
Alward**

Gaines,
Michigan

PATRONS
\$25 AND MORE (Continued)

***Jane
Mose***

Toledo,
Ohio

***John of Beverley
Chapel of the
Deaf***

Dallas,
Texas

***Rev. Robert
M.
Corl***

Lexington,
Michigan

***Rockford Lutheran
Church of the
Deaf***

Rockford,
Illinois

***Holy
Three-in-One
Lutheran Deaf***

Houston,
Texas

***Donna
Schultz***

Wauunakee,
Wisconsin

PATRONS
\$25 AND MORE (Continued)

**The Lord's
Blessings
on the**

**1997 ILDA
Convention.**

*Perry & Mimi Lou Moody
Crawford, Nebraska*

May God Bless
you on your
convention
from
The congregation of

**St. Mark Lutheran
Church For Deaf
40 E. Burke Ave
Towson, MD 21286**

Services each Sunday
8:30 AM

**SAINT MATTHEW'S
LUTHERAN CHURCH
OF THE DEAF**

63 Madison Ave
Clifton, New Jersey 07011

**This is
our New Home!**

Rev. Eric R. Ziegler, Pastor
(973) 614-9060 (voice/tty)

Fax: (973) 614-1737

E-mail: Ezieg44001@aol.com

Lay Minister

Richard Windisch, Sr.,
Deacon

Certified June 15, 1996

True J O Y

Jesus 1st

Others 2nd

Yourself last

**May God
Bless you**

The Schellins

*Gene, Karen, Gabe,
Sam & Grace
Fenton, Missouri*

**The Rev.
C. Roland Gerhold,
LLD**

RR 3 Box 2475
Honesdale, PA
18431-9563

(717) 253-5326
(voice/tty)

God Bless This Years'
I.L.D.A.

PASTOR BILL KNAACK

Missionary-at-Large
To the Deaf

Serving
Northern Wisconsin
Northern Minnesota
& the Upper Peninsula
of Michigan

**LC-MS DEAF MINISTRY
IN THE NORTHLAND**

PATRONS
\$25 AND MORE (Continued)

***Prince of
Peace Lutheran
Church***

Minneapolis,
Minnesota

***Archie
D.
Marshall***

St. Louis,
Missouri

***Pilgrim
Lutheran
Deaf***

Los Angeles,
California

***The Rev.
W. L.
Busby***

St. Augustine,
Florida

***Brenda
McClintock***

O'Fallon,
Missouri

***Alice
Glinski***

Neillsville,
Wisconsin

PATRONS
\$25 AND MORE (Continued)

***Susan
Bentley***

St. Louis,
Missouri

***Mrs.
David
Beaupre***

Winsted,
Minnesota

***Gordon
J.
Bachman***

Westland,
Michigan

SPONSORS
\$10 AND MORE

**The Bible
is God's
GateWay
to the Truth!
Walk with
Jesus
everyday!
Daily remember:
He
Baptized
you!**

*Pastor and Lois Moody
St. Louis, Missouri*

**May God richly bless
The 1997 ILDA
Convention
in St. Louis,
Missouri.**

***Roxann
A.
Aubuchon***

***Hope Evangelical
Lutheran Church***

Aurora,
Illinois

SPONSORS

\$10 AND MORE (Continued)

***Elizabeth
Morgan***

Pasadena,
California

***Christine
Hilgers***

Wisconsin Rapids,
Wisconsin

Pray the great successful
is the convention
the Lord leads.

***Cynthia Winters
of Florida***

God's Blessings
for an
inspiring convention.

***Rodney & Rhoda
Rynearson***

***Brenda
Durand***

Green Bay,
Wisconsin

***God is with you
and will crown your
efforts with success!
God Bless Our
Convention***

***Mary Davis
St. Louis,
Missouri***

May the Lord guide you,
brothers and sisters,
to walk with our Father,
through Jesus.
We are salt and shine
His light on earth so
other will glorify Him!

***Son't Sign Production's
Video Editor,
Brian Degner
St. Louis,
Missouri***

***Bob
Long***

St. Louis,
Missouri

Thanks be to God!

***Dorothy
and
Cleveland
Young
St. Louis,
Missouri***

SPONSORS
\$10 AND MORE (Continued)

***Bertie
Davis***

Waunakee,
Wisconsin

***Sharon
Findlay***

St. Peter's,
Missouri

**ILDA Mission
Project
1995 – 1997**

God Bless you all!
We have reached the
\$31,000 goal!!!
Thank you for your gifts
and support.
***Yours in Christ,
Pame Kane***

ILDA Mission Project

***Best Wishes
from Hope
Lutheran Church
of the Deaf***

Portland,
Oregon

***Evelyn
A.
Disuanco***

Los Angeles,
California

***Emmanuel Lutheran
Church of the Deaf***

West Allis,
Wisconsin

***Linda
Lou
Franklin***

Pittsburgh,
Pennsylvania

***Hilda
Rodgers***

Collinsville,
Illinois

***Maxine
J.
Smith***

St. Louis,
Missouri

SPONSORS
\$10 AND MORE (Continued)

***Great Falls
Lutheran Church
for the Deaf***

Great Falls,
Montana

***Jean
T.
Jims***

Kennett Square,
Pennsylvania

BOOSTERS
\$5 AND MORE (Continued)

***Renna
Zwirmman***

Portland,
Oregon

***Shelly
Curry***

Toledo,
Ohio

***Brenda
Miller***

Deforest,
Wisconsin

***Carolyn
Ashcraft***

Collinsville,
Illinois

***Juanita
Sanchez***

New York,
New York

***Ten
Pulfer***

Madison,
Wisconsin

**Beulah
Phillips**

Madison Heights,
Michigan

**Bill
and
Sharon
Schwarz**
St. Louis,
Missouri

**Cory
Eckstrom**

York,
Nebraska

**Lois
Yemm**

St. Louis,
Missouri

**Arthur
Green**

Los Angeles,
California

\$2 BOOSTERS

Arthur Allen	Angus Matherson
Doris Allen	Elizabeth Mc Alister
Arthur & Ella Anderson	John Mc Alister
Gary N. Andersen	Rena Mae Mc Eachern
Karen Barr	Marilyn Neumann
Kathy Bauer	Joshua Perry
Pastor R. A. Bauer	Andrew Petzoldt
Mrs. E. Bauer	Janet Petzoldt
Mary L. Burgess	Joy Petzoldt
Marie Cardo	Shirrel Petzoldt
James Cheese	Catherine Ramsey
Michael Chonkolay	Albritton Randolph
Patricia Faulkner	Sylvia Rinehart
Jack Fleming	Dale Rycroft
Rita Fleming	Laurie Rycroft
Larry & Jane Gorton	Lindsay Rycroft
Butler Holiday	Marjorie Salley
Mattie Holiday	Luther & Melba Sandberg
Jean Ingram	Joanne Walmsley
Dorothy Jackson	Joe Yeates
Russell Jackson	Doreen Youngs
Eva Jefferies	Les Youngs
Edward Johnson	Winston Youngs
John Kobzey	



**AMERICAN
HERITAGE**

Flags • Banners • Poles
Signs • Advertising Specialties

Martha J. Brown
Office Manager

9904 Clayton Rd.
St. Louis, MO 63124

314/432-2101
FAX: 432-7316

Specialists in Banners, Flags & Promotional Ideas

**Thank You
American Heritage
for
Donating
200
American Flags
for our
Banquet Table
Center Pieces!**

St. Matthew's Lutheran Church of the Deaf

**We are now in our NEW HOME:
63 Madison Avenue
Clifton, New Jersey 07011**

After 45 years in Newark, we have moved to a new building located in Clifton, New Jersey (about five miles north of Newark).

**Sunday Worship time: 9:45 A.M.
ALL ARE WELCOME**

**We are a FULL SERVICE MINISTRY to the Deaf.
Ample parking just across the street in
Municipal Parking Lot.**

**Rev. Eric R. Ziegler, Pastor
Church Phone: (973)614-9060 (voice/tty)
Fax: (973)614-1737 E-Mail: EZieg44001@aol.com**

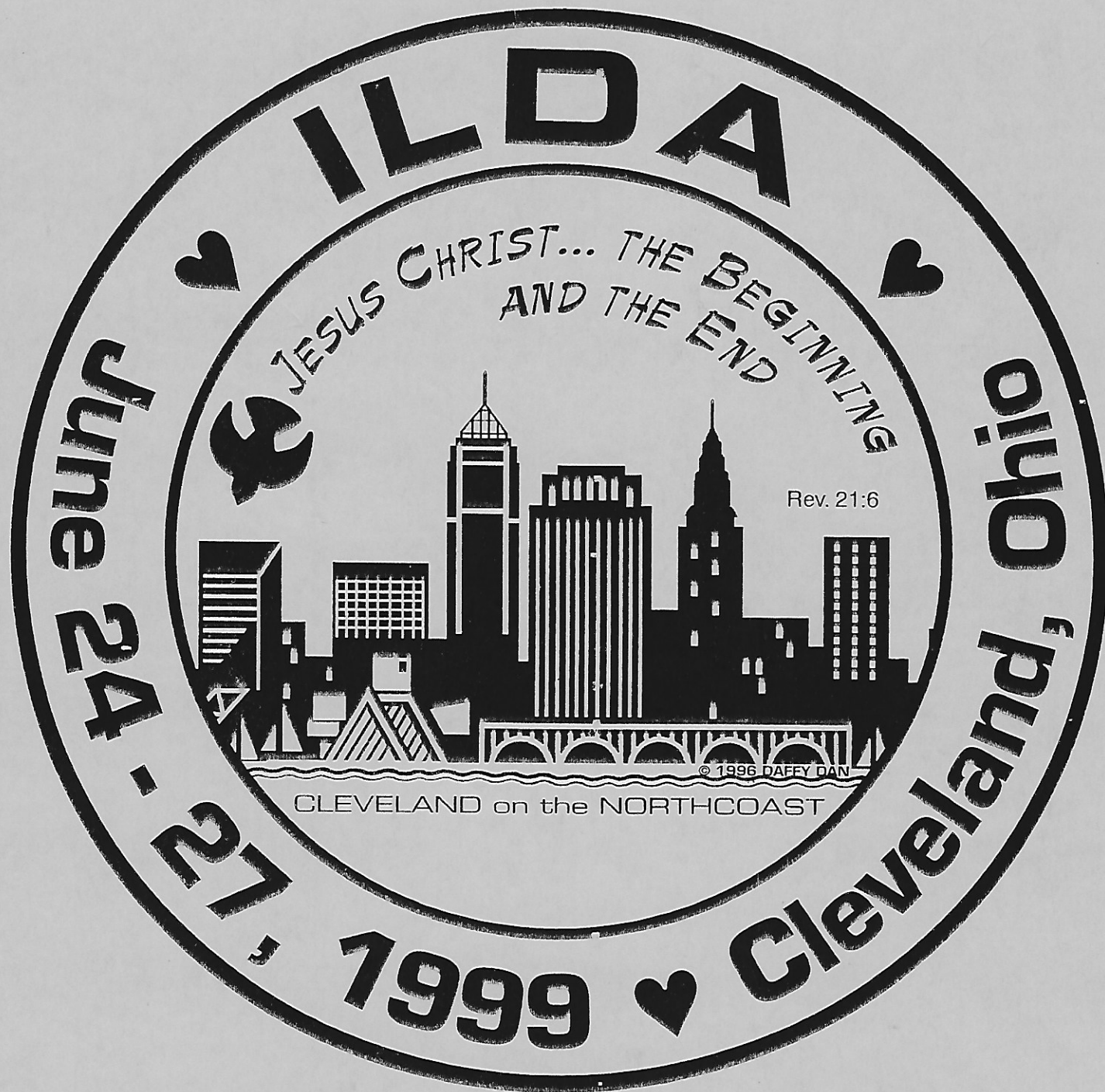
Lay Minister Richard Windisch, Sr., Deacon

COME WORSHIP WITH US!

JESUS CHRIST...

THE BEGINNING AND THE END

Rev. 21:6 & 22:13



Hey, ILDA...

see you in Cleveland, the Summer of 1999!