

ILLINOIS-WISCONSIN NUMBER

# The Deaf Lutheran.

A MISSIONARY MONTHLY.

*Published by the Board of Missions for the Deaf of the Lutheran Synod of  
Missouri, Ohio and other States.*

Entered as second-class matter February 11, 1909, at the post office at Milwaukee, Wis., under act of March 3, 1879.

Mrs. Emely Eaton Mar 25  
2213 W 56th St

Vol. 17.

Milwaukee, Wis., January, 1925.

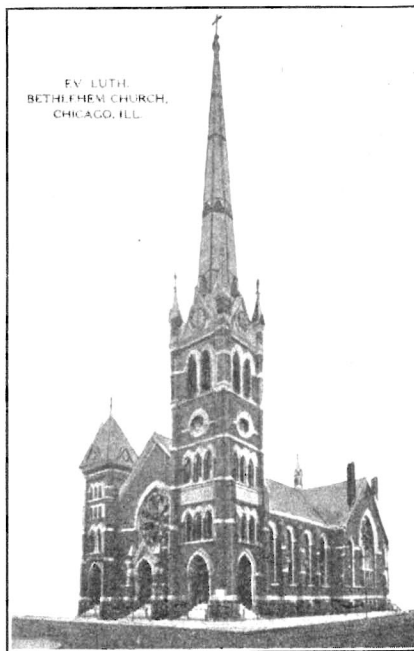
No. 1.

## "God is Love"

Our Lutheran Mission for the Deaf was begun with a sermon on the words: "God is love," 1 John 4, 18. Surely a fitting text for the founding of a mission which preaches the divine gospel that Jesus Christ is the Savior of sinners. Sixteen deaf received this first sermon with joyful hearts. To-day several thousand deaf enjoy the preaching of God's love for them in more than a hundred preaching stations of our Mission.



REV. AUGUSTUS REINKE



BETHLEHEM CHURCH, CHICAGO

Rev. Augustus Reinke preached the first Lutheran sermon in the sign-language on the words "God is love" in Bethlehem Lutheran Church, Chicago, to sixteen deaf, March 4, 1894.

"God is love." May this word fill the hearts of our deaf with joy and courage and hope for the new year. May this message reach the hearts of many more deaf and bring them to Christ and through Him to joy everlasting in heaven.

May our loving God grant a blessed New Year to you all!

A. C. D.

## OUR MISSION FOR THE DEAF IN WISCONSIN

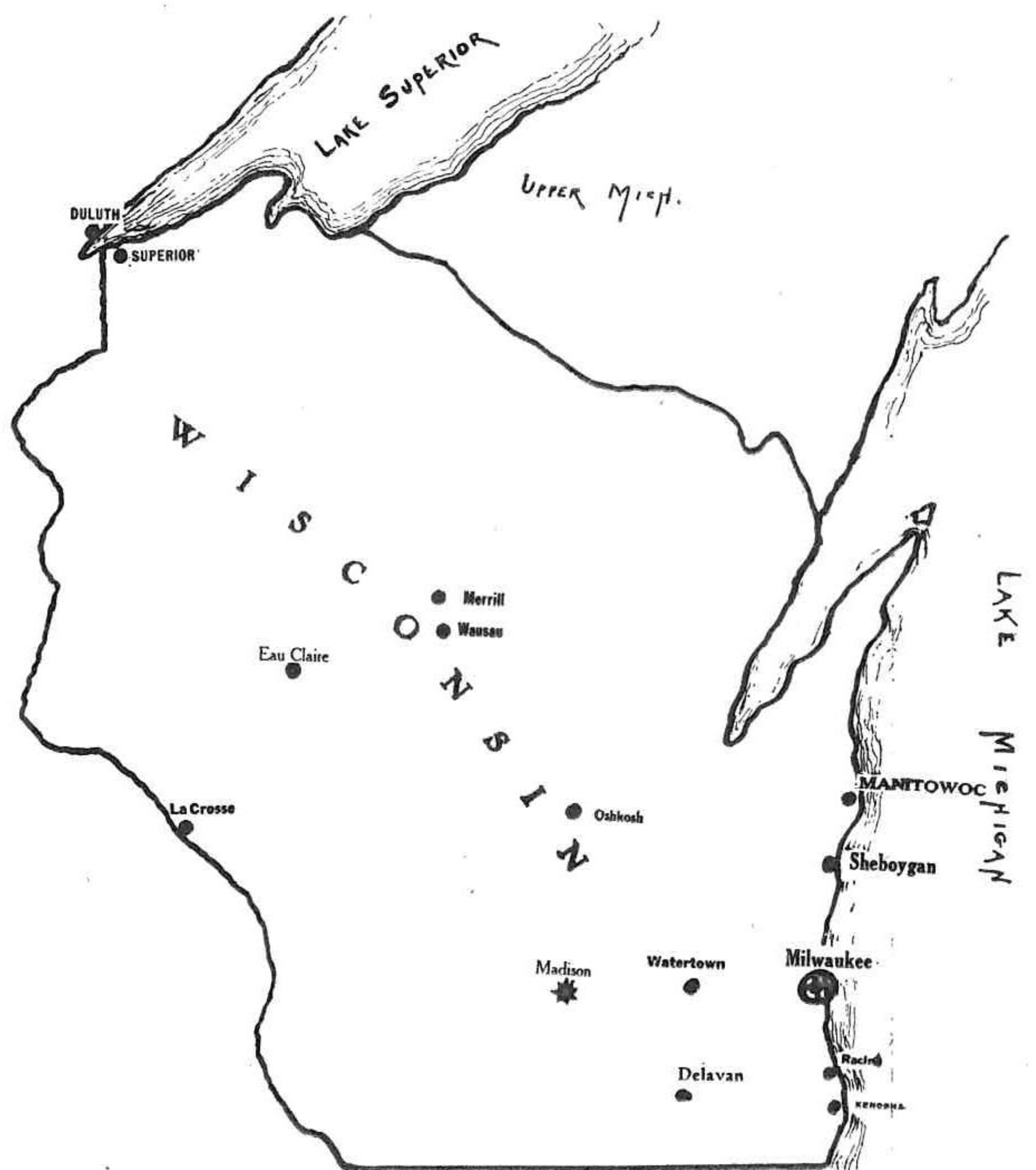
Milwaukee was one of the first cities to which our Board of Missions for the Deaf called a missionary. This was in August, 1896. But it was not much later when requests came to him from other cities, such as, Oshkosh, Sheboygan, and Racine. It was as early as in February of 1897 that we received a request



REV. T. M. WANGERIN,  
pastor of Milwaukee Mission for twenty-eight years.

to baptize a deaf lady in Sheboygan. Soon thereafter other deaf in distant cities requested the service of the missionary, and to-day we have eleven preaching stations besides the Milwaukee congregation, comprising only the principal cities of the state. Monthly trips are made to Sheboygan, Oshkosh, Racine, and Kenosha; Watertown and Madison are comparatively new fields. Services by special appointment are held in Merrill, Wausau, Mani-

towoc, Reedsburg, and the State School for the Deaf at Delavan with an enrollment of 170 pupils. Many of the Lutheran pupils have been confirmed at this School and quite a few are under instruction preparatory to confirmation at the present writing. In the scope of our work we include also the blind-deaf, three of whom have been confirmed in Milwaukee in 1911. Stop to consider what it means to be both blind and deaf. Then thank



### OUR STATIONS IN WISCONSIN

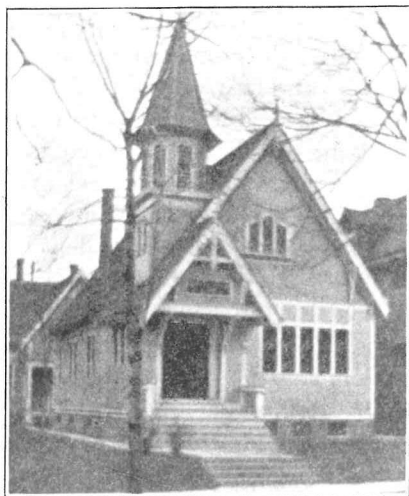
All stations shown on map, excepting Superior and Eau Claire, are being served by the Milwaukee missionary. Superior and Patzau (near Superior) are served from Duluth and Eau Claire from St. Paul.

your God for being able to see and to hear. Through His Word our Lord Jesus brings cheerfulness and happiness to these unfortunates, who must sit in silence and night here on earth. At the present time 28 deaf are under instruction in our "Milwaukee Mission." "And in that day shall the deaf hear the words of the book, and the eyes of the blind shall see out of obscurity, and out of darkness." Isaiah 29, 18.

T. M. W.

## OUR MILWAUKEE CONGREGATION AND ITS CHURCH

Unique were the dedicatory services which took place in Milwaukee on April 14, 1901, unique in this respect, that with special and appropriate ceremonies, chiefly in the sign-language, the Emmanuel Congregation for the Deaf dedicated unto the Lord its new house of worship, the first Lutheran Church for the Deaf in the world.



**EMMANUEL CHURCH FOR THE DEAF,**  
Milwaukee, the erection of which was made possible  
by the liberal donations of the school children of the  
Missouri Synod.

Beautiful was the Spring day, when said congregation assembled at the door of its new church home. Many deaf and hearing friends were present at the time, not only such as reside in Milwaukee, but also many from neighboring cities, such as Racine, Sheboygan, Cedarburg, and Grafton. From far and near guests came, both morning and eve-

ning, until the church was over-crowded, with many standing outside.

Twenty-six years ago this congregation of deaf organized with but eleven voters. Since then it has grown as a tender tree in the vineyard of the Lord, the confirmation of 123 as well as the finding of such deaf as have been confirmed at our School for the Deaf at Detroit and by pastors of our church having increased its size to 36 voting and 76 communicant members.

A quaint chapel our congregation now possesses as shown in the accompanying illustration. It is 30x50 feet and makes a very neat appearance, not only from the outside, but it is also very cozy and inviting from the inside, with its leaded glass windows, high altar in white and low pulpit and baptismal font. It comprises an elevated platform, including floor and special arrangements to throw proper light on the speaker either by day or night, the whole of which is adapted especially to the use of a congregation for the deaf.

The remarkable feature about this chapel is that within less than a year after we had sent our circulars to our school children, asking for aid in the erection of the first Lutheran Church for the Deaf, we had sufficient funds to pay for the entire building. It is indeed a monument of love, an object of gratitude for the deaf at all times.

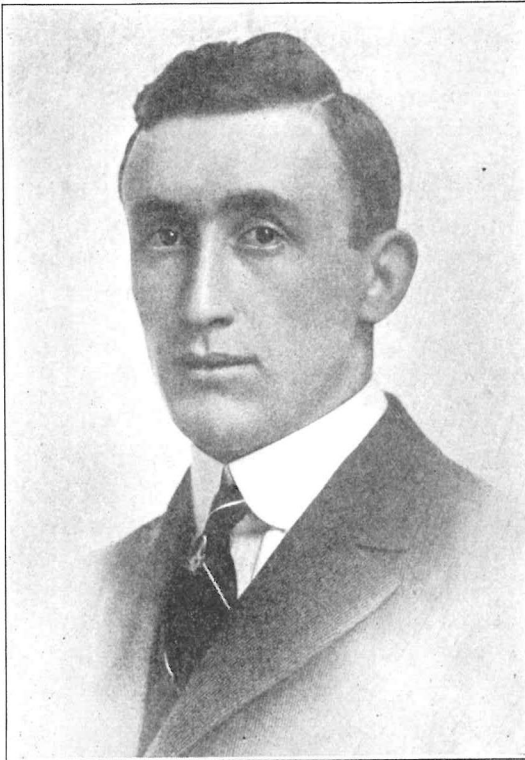
May the Lord bless this church and congregation. May the Word of God, the sum of which is Christ crucified, continue to be preached to the deaf of Emmanuel Church, in their own peculiar way, to the salvation of many souls. God grant it! T. M. W.



Emmanuel Congregation for the Deaf as it appeared the afternoon of  
April 14, 1918, celebrating its 20th anniversary.

### OUR MISSION FOR THE DEAF IN ILLINOIS

Chicago is the cradle of our Lutheran Mission for the Deaf. Mr. Ed. J. Pahl, living in Michigan City, Indiana, wrote to Supt. Uhlig of the Detroit School, in 1893, in regard to preaching-services for the deaf. The school board then asked Rev. Aug. Reinke in Chicago to preach to the deaf. And the deaf in Chicago urged Pastor Reinke to learn the sign-language and sign his sermons to them.



**REV. A. C. DAHMS,**  
Missionary in Illinois Field since 1918.

The first service was conducted in Bethlehem Church, Chicago, on March 4, 1894. Requests for services came from deaf in other cities, and Rev. Reinke was obliged to appeal to our Missouri Lutheran Synod to establish a special Mission among the Deaf. A committee appointed to investigate the field reported favorably, and Synod elected a Board for Deaf Missions in 1896. Under Synod's auspices the Mission developed into a nation-wide undertaking, for to-day fifteen missionaries are preaching to the deaf in 106 different stations.

Our Illinois field centers in Chicago for two important reasons. The deaf of this state find the city of Chicago attractive in many respects: a variety of work offers itself here, churches and clubs for the deaf are an inducement, and social connections bring the deaf to the big city. Naturally the efforts of the missionary in this field are directed chiefly toward mission-work in Chicago. But the early history of our Mission in general and of the Chicago station will show further why our work in Chicago has developed well with comparatively little development in other cities of this field. In the first years of our Mission we had few men available, and they were obliged to travel long distances to preach to the deaf of the large cities in the central states, that left little time for frequent and regular attention to the spiritual needs of deaf in smaller cities of this state; these cities were already being served by the Episcopal and Methodist clergymen of Chicago. Rev. Arthur Reinke, our first Chicago pastor for the deaf, worked in Chicago and made long trips, and beside that he assisted his brother at the large Bethlehem Church in Chicago, so that small groups of deaf could not expect his undivided attention. Furthermore, Illinois has few cities with a large deaf population in the face of Chicago's attraction, and the Illinois School at Jacksonville draws few pupils from Chicago where there are oral schools for the deaf.

Since 1912 the Illinois field has had missionaries who could devote their whole time to the needs of the deaf, and our mission has placed more men in the field to remove the burden of long trips from the Chicago missionary. From that time on regular preaching stations have been established in cities outside of Chicago. At present services are conducted every month in Grand Rapids, Mich., South Bend, Ind., Elgin and Kankakee, Ill. Services by appointment are held in Valparaiso, Ind., St. Joseph, Mich., and in Crystal Lake, Ill. Prospects are fair for new stations in Illinois and in Michigan. A. C. D.

“The Son of man came not to be ministered unto, but to minister, and to give His life a ransom for many.” Matthew 20, 28.

## MISSIONARIES IN THE ILLINOIS FIELD, 1894-1925

### Rev. Augustus Reinke, 1894-1897

The founder of our Mission. He asked Synod to take over the work in 1896. Organized Our Savior's Congregation in October, 1896. Died in 1899.

### Rev. Arthur L. Reinke, 1897-1912

First pastor of the Chicago Congregation. Under him Chicago chapel on Crystal St., was built in 1904, and a Ladies' Aid Society was organized. Became assistant pastor at Bethlehem Church in 1900. The only pastor there now.

### Rev. William Gielow, 1902-1902

Assisted Pastor Reinke, preaching in Englewood for one year. Now director of School for the Deaf, Detroit, Mich.

### Rev. Nathanel P. Uhlig, 1912-1918

Son of Rev. Uhlig of the Detroit School. Englewood branch revived and again discontinued. Opened up several preaching stations in Illinois.

Editor of "The Deaf Lutheran" from 1915 to 1918. Now pastor of a church in Cedar Rapids, Iowa.

### Rev. Arthur C. Dahms, 1918-1925

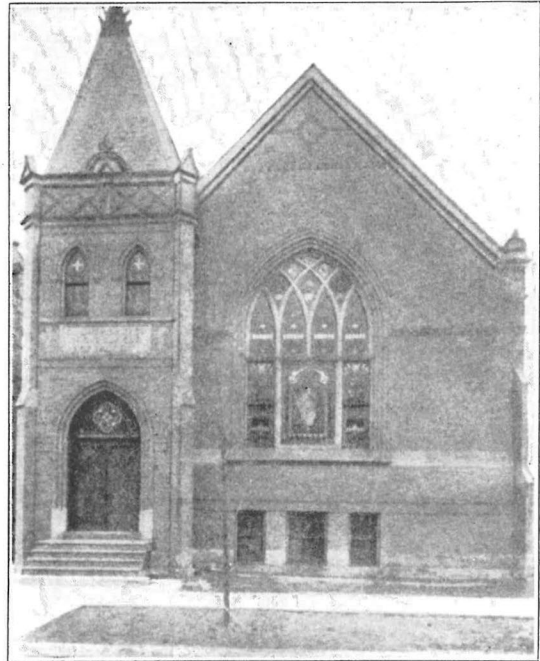
Called from Seminary, vacancy filled by Rev. A. L. Reinke. During his pastorate, in 1920, Crystal St. chapel was sold. Services at Bethlehem Church.

Present chapel-parsonage erected in 1922. Englewood branch established again in 1923.  
A. C. D.

## OUR MISSION IN CHICAGO

### Our Savior's Congregation

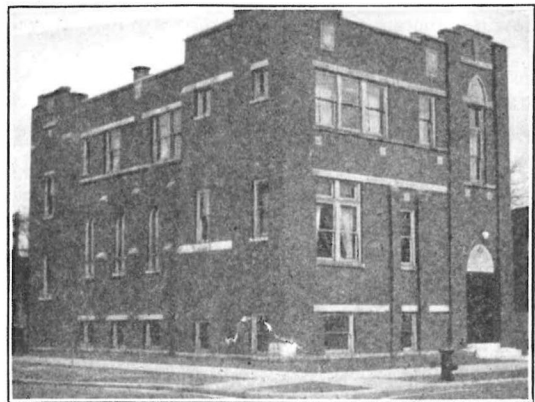
"The First Evangelical Lutheran Deaf-Mute Congregation of Our Savior in Chicago" was organized October 2, 1896, with sixteen voting members. Ladies' Aid Society was established in 1904 when the Crystal Street Church was built. Congregation to-day numbers 38 voting members and 90 communicant members, including Englewood. Services are conducted every Sunday in Our Savior's



### OUR SAVIOR'S CHURCH,

Chicago, built under the pastorate of Rev. A. L. Reinke in 1904 and sold, because of changed conditions, under the pastorate of the present pastor, the Rev. A. C. Dahms in 1920.

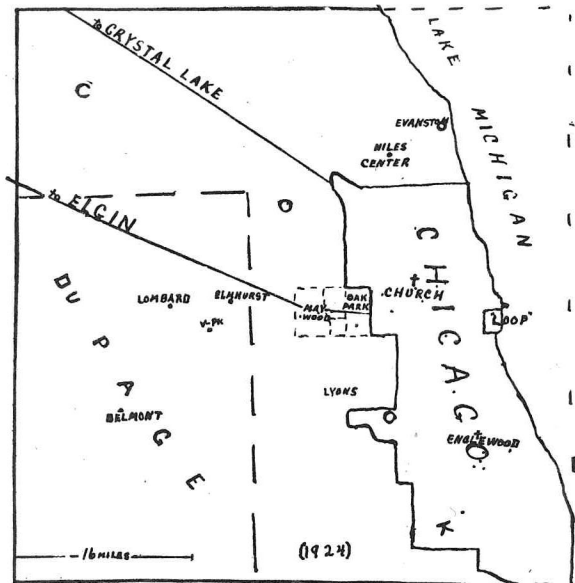
Church on Ridgeway Ave., at 10:30 A. M. during the summer months, at 2:30 P. M. during winter months. Englewood services are conducted on second and last Sunday at 11:30 A. M. during winter months, at 2 P. M. during summer, in St. Stephen's Lutheran School, corner of 65th and Peoria Sts.



### CHAPEL-PARSONAGE

of our Savior's Congregation, Chicago, dedicated December 3, 1922.

Our Savior's parish has a difficult problem, the distance which members must travel to attend services. This makes services in Englewood a necessity. Look at the map of Chicago shown below. The two preaching stations are 13 miles apart. During the fall in 1924 three Englewood deaf were instructed in their homes, the pastor driving 16 miles one way for instruction meetings. See some of the spots on the map indicating homes of some of the deaf, they do not seem far away on this little map, but measure the distance and see for yourself. About a half dozen members live within 3 miles of the church. Sixteen of our members, one-fifth of the congregation, live



MAP OF OUR SAVIOR'S PARISH,  
showing distances which members must travel to  
attend services.

outside of Chicago; the map shows the suburbs in which they live, the deaf come to church and socials by train and elevated, by auto bus and street-car, county (suburban) street-cars and city cars, paying two fares, — and still we can thank God for good attendance at our services and for good financial support of the church!

May God's blessing abide with Our Savior's Congregation in the future, and may many deaf find their Savior Jesus Christ through the preaching of God's Word in their church.

A. C. D.

## SUMMARY OF PREACHING STATIONS OF THE WISCONSIN AND ILLINOIS FIELDS

### I. Wisconsin Field

Stations	Communicants	Average Attendance
Milwaukee .....	76	39
Sheboygan .....	8	22
Oshkosh .....	9	10
Racine .....	2	12
Manitowoc .....	7	12
Merrill .....	2	10
Wausau .....	—	5
Delavan School .....	19	170
Watertown .....	8	11
Madison .....	3	15

### II. Illinois Field

Stations	Communicants	Average Attendance
Chicago .....	90	38
Englewood .....	—	9
Grand Rapids, Mich. ....	4	30
South Bend, Ind. ....	7	6
Elgin, Ill. ....	4	6
Kankakee, Ill. ....	2	4
Crystal Lake, Ill. ....	2	2
Valparaiso, Ind. ....	2	2
St. Joseph, Mich. ....	—	4

To the above sketch of the Wisconsin and Illinois fields of Our Mission for the Deaf the missionaries would add one request, particularly for the benefit of our hearing readers. If you know of deaf-mute children, try to get them into our School for the Deaf in Detroit, there the children will receive a good schooling and thorough religious training; if you meet adult deaf who have no church connection, direct them to our services, and send their names and addresses to us. And, "brethren, pray for us."

T. M. Wangerin, Missionary of Wisconsin Field.

A. C. Dahms, Missionary of Illinois Field.

"Here is a book, the Bible, worth more than all others that were ever printed; yet it is my misfortune never to have found time to read it. It is now too late."

—Patrick Henry (when near death).

### STRENGTH FOR THE NEW YEAR FROM THE BOOK OF PSALMS

God is our Refuge and Strength, a very present help in trouble. Therefore will not we fear, though the earth be removed, and though the mountains be carried into the midst of the sea; though the waters thereof roar and be troubled, though the mountains shake with the swelling thereof. Selah. — Psalm 46, 1-3.

My soul, wait thou only upon God; for my expectation is from Him. He only is my Rock and my Salvation; He is my Defence; I shall not be moved. In God is my salvation and my glory; the rock of my strength, and my refuge is in God. Trust in Him at all times; ye people, pour out your heart before Him: God is a refuge for us. Selah. — Psalm 62, 5-8.

I will love Thee, O Lord, my strength. The Lord is my rock, and my fortress, and my deliverer; my God, my strength, in whom I will trust; my buckler, and the horn of my salvation, and my high tower. I will call upon the Lord, who is worthy to be praised: so shall I be saved from mine enemies. — Psalm 18, 1-3.

The Lord is my shepherd; I shall not want. He maketh me to lie down in green pastures: He leadeth me beside the still waters. He restoreth my soul: He leadeth me in the paths of righteousness for His name's sake. Yea, though I walk through the valley of the shadow of death, I will fear no evil: for Thou art with me; Thy rod and Thy staff they comfort me. — Psalm 23, 1-4.

I will lift up mine eyes unto the hills, from whence cometh my help. My help cometh from the Lord, which made heaven and earth. He will not suffer thy foot to be moved: He that keepeth thee will not slumber. — Psalm 121, 1-3.

I will say of the Lord, He is my refuge and my fortress: my God; in Him will I trust." — Psalm 91, 2.

---

"As the Word did make it,  
So I believe and take it."

---

"All happiness attends the right knowledge of Christ." Matthew 16, 16-17.

### SCHOOL LETTER

Yesterday, December 21st, was a very icy and slippery day, due to the sleet storm of the Thursday before and the very cold weather following the storm. Although it was a very cold day, nevertheless our annual Christmas program took place in the beautiful new school-hall of the church of Pastors Tresselt and Gold, on McKinstry Street. The large hall was well filled with friends, and their attention was held for almost two hours without their interest flagging in any way. The program consisted of the usual Christmas service for children, the Christmas hymns in this service were signed beautifully by the pupils, and the ideas of the songs were conveyed to the people by Mr. Echternkamp, who sang the words of the songs in splendid harmony and time with the signing, accompanied by Mrs. John A. Klein on the piano, a fine Christmas play well played by the older children, and a pantomime play by the younger children, two very fine basso solos by Mr. Echternkamp, accompanied by Mr. Mueller, and a short address by Rev. Quitmeyer, a member of the school board and a former teacher of the School. After the program the presents given by the Ladies' Aid of the School (Mrs. Rev. Ebendick, president, and Miss Anna Spaeth, Mrs. Herman Kaufmann, and Mrs. F. Wiedewald, the buying committee who bought and packed the presents) were handed over to the children. Also the teachers and the other workers in the School were remembered with boxes. Hereupon the children, the workers at the School, and the drivers of the autos who took the children to and from the hall, and the parents of children were treated to a nice supper by the Ladies' Aid of the church in whose hall the celebration was held. Supper over, some were taken to trains, and others were taken home by their parents. About ten are remaining in the School during the holidays. Next year, God willing, the Christmas celebration will be held on the east side of Detroit.



## LUTHERAN MISSIONS FOR THE DEAF

## BOARD OF MISSIONS FOR THE DEAF

Rev. A. H. Kuntz, Chairman, Osseo, Minn.  
 Rev. E. T. Heyne, Sec'y, 855 Armstrong Ave., St. Paul, Minn.  
 Mr. H. G. Lohmann, Treasurer, c-o C. Gotzian & Co., St. Paul, Minn.  
 Rev. J. Huchthausen, 1115 E. 19th St., Minneapolis, Minn.  
 Mr. J. P. Miller, 1617 Elliot Ave., S., Minneapolis, Minn.

## NEW YORK MISSION

Rev. A. Boll, 192 Hewes St., Brooklyn, N. Y.  
 New York City, Immanuel Lutheran Church, 177 S. 9th St., between Roebling and Driggs Ave., Brooklyn, N. Y. Sunday-school and Instructions, Friday evenings, Parish House of St. Matthews, 145th St. and Convent Ave., New York City. Instructions, Saturday morning, 9:30 a. m. Church of the Redeemer, 422 W. 44th St., New York City.  
 Albany, N. Y., 39 Delaware St., Saturday preceding last Sunday.

Kingston, N. Y., West Hoboken, N. J., and Meriden, Conn., by appointment.

## DETROIT MISSION

Rev. E. J. Scheibert, 17862 Cliff Ave., Detroit, Mich.  
 Detroit, Chapel on Pulford, right off Meldrum, Sundays and other holy days, 10:30 a. m.  
 Toledo, Church, cor. Vance and Ewing, 1st Sunday, 2:30 p. m.  
 Ft. Wayne, St. Paul's Parish House, Barr and Madison, second Sunday, 10:15 a. m.  
 New Haven, Lutheran Church, last Sunday, 2 p. m.  
 Flint, Y. M. C. A., last Sunday, instruction in Catechism, 9:30; services, 10:30 a. m.  
 Saginaw, Lutheran Church, Ninth and Cherry, East Side, last Sunday, 2:30 p. m.

## CLEVELAND MISSION

Rev. O. C. Schroeder, 2204 Bunts Rd., Cleveland, Ohio.  
 Cleveland, O., Lutheran Hall, E. 30th and Prospect Ave., first and third Sundays, 10:30 a. m.  
 Cleveland, O., Hard-of-Hearing, 1st and 3rd Thursday, 8 p. m.  
 Erie, Pa., 326 W. 11th St., 4th Sunday, 3 p. m.  
 Columbus, O., School for the Deaf; 1st Sunday, 3 p. m. Religious Instructions, 4 p. m.  
 Pittsburgh, Pa., First Lutheran Church, 553 6th Ave., second Sunday, 11 a. m.  
 Edgewood, Pa., services for our pupils at W. Pennsylvania School for the Deaf, second Sunday, 10:00 a. m.  
 Jenera, Findley, Lorain, Elyria, Oberlin, O., New Castle, Pa., Buffalo, N. Y., Gallaudet College, Wash., D. C., by appointment.

## CHICAGO MISSION

Rev. A. C. Dahms, 1400 N. Ridgeway Ave., Chicago, Ill.  
 Chicago, Our Savior's Church, 1400 N. Ridgeway, Sundays, May 1—Oct. 31, 10:30 a. m., Nov. 1—April 30, 2:30 p. m.  
 Englewood (Chicago), St. Stephen's School, 65th and S. Peoria, 2nd and last Sundays, 11:30 a. m., Nov. 1—April 30.  
 South Bend, Ind., Lutheran School, 410 W. Jefferson St., second Thursday, 8:00 p. m.  
 Elgin, Ill., 21 Ann St., Crystal Lake, Ill., monthly.  
 Kankakee, Ill., Valparaiso, Ind., St. Joseph, Mich., by appointment.

## MILWAUKEE MISSION

Rev. T. M. Wangerin, 1711 Meinecke Ave., Milwaukee, Wis.  
 Milwaukee, Emmanuel Chapel, 1711 Meinecke Ave., Sundays and other holy days, 10:00 a. m.  
 Oshkosh, Wis., Trinity Lutheran Church, Bowen and School Sts., monthly, 2nd Wednesday, 7:30 p. m.  
 Sheboygan, Wis., St. Mark's Lutheran Church, N. 7th St., near Ontario Ave., monthly, 3rd Wednesday, 7:30 p. m.  
 Racine, Wis., St. John's Church, Erie and Kewaunee Sts., monthly, 3rd Sunday, 2:30 p. m.  
 Manitowoc, Merrill, Wausau, Madison, Watertown, Wis., and State School, Delavan, Wis., by appointment.

## MINNEAPOLIS MISSION

Rev. J. L. Salvner, 1221 22nd Ave. N., Minneapolis, Minn.  
 Minneapolis, Grace Chapel, Girard and 22nd Ave. N., Sundays and other holy days, 11:00 a. m.  
 Sioux Falls, S. D., first Wednesday, School for the Deaf, 6:30 p. m.; Zion School, 8:00 p. m.  
 Watertown, S. D., Tuesday before first Wednesday.  
 Gaylord, Minn., Monday before second Wednesday.  
 Mitchell, S. D., Dawson, Minn., by appointment.

## ST. PAUL MISSION

A. C. Beyer, 917 Iglehart Ave., St. Paul, Minn.  
 Redeemer Church, Carroll and Dale. Sundays and days, 10:45 a. m.  
 Monday, 3:00 p. m.  
 School, 2nd St. and 2nd Ave., N. W., 30 p. m.  
 7:30 p. m.  
 Church, 20th St. and 5th Ave., m.  
 20th and Jackson, second

Sunday, 2:30 p. m.  
 Saturday, 3:00 p. m.

## OR MISSION

Parkway, Duluth, Minn.  
 10th St. and 19th Ave. E., 2nd  
 Belknap and Cummings, 4th

Winnipeg, Can., School, first Sunday.

Devils Lake, State School, 3rd Saturday and Sunday.

Grand Forks, N. D., 603 S. Third St., Friday before 3rd Sunday, 8:00 p. m.

Fargo, N. D., 112 4th St. N., Thursday before 3rd Sunday, 8:00 p. m.

Cloquet, Minn., 2nd Sunday, 11:00 a. m.

Patzau, Wis., International Falls, Walker, Bemidji, and Wadena, Minn., by appointment.

## ST. LOUIS MISSION

Rev. C. Schubkegel, 4536 Labadie Ave., St. Louis, Mo.  
 St. Louis, Grace Lutheran Church, Garrison and St. Louis Ave., 2nd and last Sundays, 3:00 p. m.

St. Charles, Mo., Homes of Deaf, last Sunday, 10:30 a. m.

Evansville, Ind., Lutheran School, E. Illinois Str., bi-monthly, first Sunday, 10:00 a. m.

Indianapolis, Ind., Lutheran Church, 717 S. New Jersey St., bi-monthly, first Sunday, 9:30 a. m.

Louisville, Ky., Lutheran Church, 1125 E. Broadway, bi-monthly, first Sunday, 7:30 p. m.

Jacksonville, Ill., monthly, third Sunday, Religious instruction in State School, 9:00 a. m. Services in Salem Lutheran Church, 2:30 p. m.

## OMAHA MISSION

Rev. E. Mappes, 2725 No. 61st St., Omaha, Nebr.  
 Omaha, Nebr., Lutheran Church, Benson Sta., first and third Sundays, 2:30 p. m.

Lincoln, Nebr., by appointment.

Sioux City, Iowa, Lutheran Church, 613 Jackson St., last Sunday, 1:30 p. m.

Boone, Ia., Lutheran Church, 12th and Boone Sts., 2nd Sunday, 2:00 p. m.

Des Moines, Ia., Lutheran Church, 7th St. and Forest Ave., 2nd Sunday, 8:00 p. m.

Omaha, Nebr., State School, 3223 N. 45th St., every Thursday.  
 Council Bluffs, Iowa, State School, every first and third Tuesday.

## KANSAS CITY MISSION

Rev. A. E. Ferber, 3020 Brooklyn Ave., Kansas City, Mo.  
 Kansas City, Mo., Lutheran Church, 16th and Cherry St., first and third Sunday, 3:00 p. m.

Topeka, Kans., Lutheran School House, 4th and Van Buren Sts., first and third Sunday, 7:30 p. m.

Joplin, Mo., 4th Sunday, 3 p. m.

Atchison, Kans., Lutheran Church, 8th and Laramie Str., first Wednesday, 8:00 p. m.

Lawrence, Kans., Curtis home, 1007 Rhode Island Str., first Monday, 8:00 p. m.

Olathe, Kans., Austin, Texas, Fulton, Mo., State Schools, by appointment.

## SEATTLE MISSION

Rev. G. W. Gaertner, 1101 15th Ave., Seattle, Wash.  
 Seattle, Wash., Church of Our Redeemer, cor. 15th Ave. and Spring St., second and fourth Sundays, 3 p. m.

Tacoma, South 16th and L Sts., 2nd and 4th Sundays, 10:30 a. m.

Everett, Wash., Lombard and 26th, W., 1st and 4th Sundays, 8 p. m.

Anacortes, Wash., 20th and O Sts., 1st Sunday, 2 p. m.

## PORTLAND MISSION

Rev. E. Eichmann, 197 Church St., Portland, Ore.  
 Portland, Ore., cor. Rodney Ave. and Ivy St., 1st and 3rd Sundays, 2:30 p. m.

Vancouver, 13th and Franklin, 1st and 3rd Sunday, 7:30 p. m.

Vancouver, State School, 3rd Sunday, 10:00 a. m.

Salem, Ore., State School, 2nd and 4th Sundays, 10 a. m.

Baker, Pendleton, Ore., by appointment.

## SPOKANE MISSION

Rev. C. G. Frice, 729 W. Klerman Ave., Spokane, Wash.  
 Spokane, Wash., W. 3rd and Divisions Sts., 2nd and 4th Sundays, 10:30 a. m.

Yakima, Wash., W. 4th and Walnut, 1st Sunday, 2:30 p. m.

Goodings, Idaho, State School, 3rd Sunday.

Lewiston, Dover, Idaho, by appointment.

## CALIFORNIA MISSION

Rev. N. F. Jensen, 137 S. Pine, Orange, Cal.  
 Los Angeles, 1st and 3rd Sundays, 3:00 p. m.

San Diego, by appointment.

LUTHERAN SCHOOL FOR THE DEAF, NORTH DETROIT, MICH.

The object of this school is to give its pupils a thorough Christian and common education. The regular course of instruction occupies from 7 to 8 years. Children are admitted from the ages of 7 years on. Full information and application blanks may be obtained from Rev. Wm. Gielow, Supt. 6841 Nevada Ave., Detroit, Mich.

## THE DEAF LUTHERAN

Official Monthly Organ of Luth. Church Missions for the Deaf. Fifty Cents per Annum in Advance.

The Deaf Lutheran goes to press on the 22nd of the month. Communications intended for publication must reach the editor on or before the 20th of the month.

Send all money, subscriptions, changes of address, and cancellations to the business manager, Rev. W. Ferber, 116 Chester Parkway, Duluth, Minn.

Send all articles for publication to the editor, Rev. J. L. Salvner, 1221 Twenty-second Ave. No., Minneapolis, Minn.

Office of Publication: 263 Fourth St., Milwaukee, Wis.